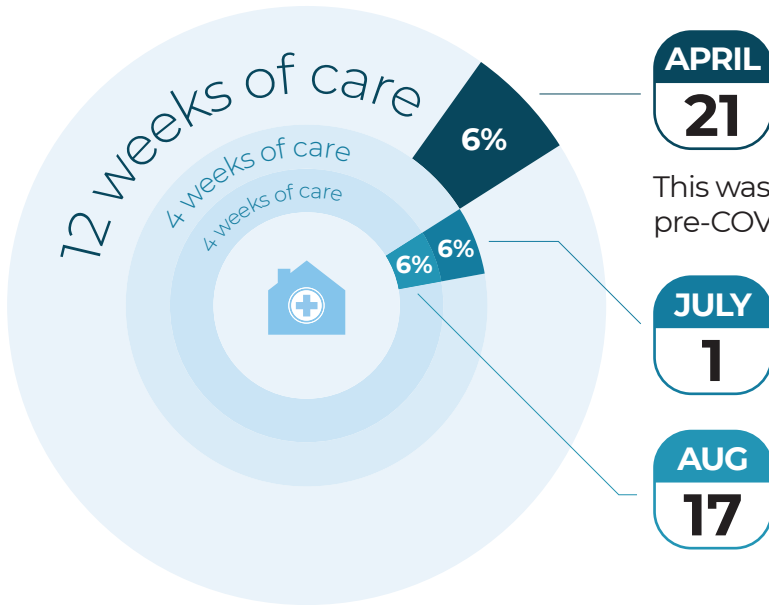


Supported Living

Providers are still being paid on actual contracts held with the Council.



APRIL 21

Providers will have received on the 21st April an upfront support payment equivalent to **6% of 12 weeks of care**.

This was calculated based on the average of previous, pre-COVID-19, payments.

JULY 1

Providers will have received on the 1st July another **6% payment relating to 4 weeks worth of Care** (rather than 12 as before).

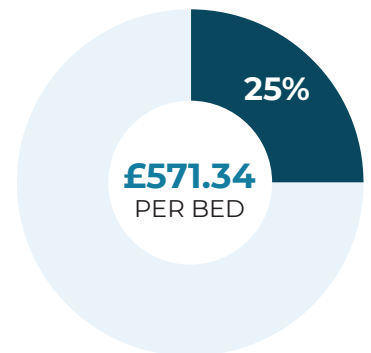
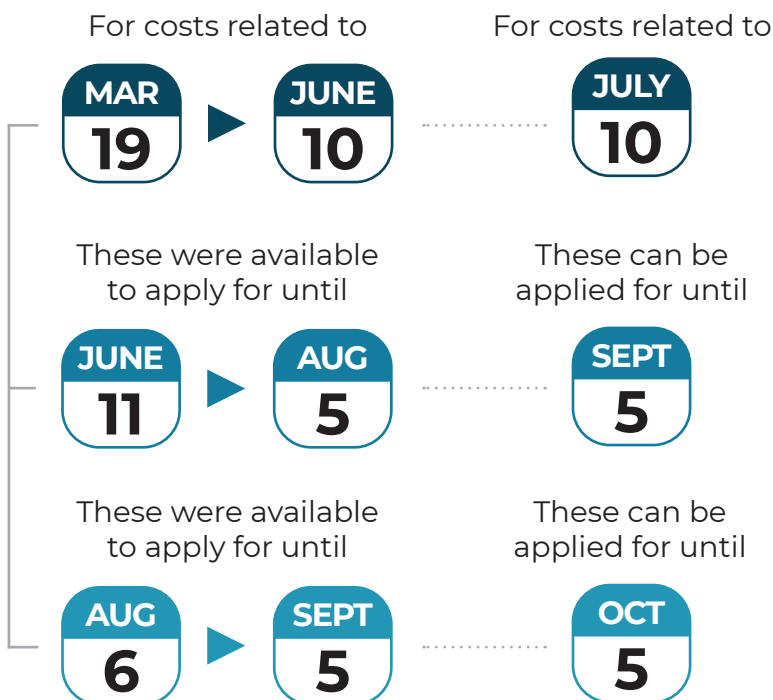
AUG 17

Providers will receive another **6% payment on 17th August**. Similar payments relating to September and beyond will be decided upon nearer the time.

+ All care providers have access to additional financial support on a claims basis to cover specific COVID-19 related costs over and above the 6%. Details on the process are available [here](#).

+ For the **Infection Control Fund**, you will have been in the **25%** cohort, please see relevant guidance [here](#).

+ This is available in 3 tranches



£481.34 per bed
Instalment one paid on

£90 per bed
Instalment two paid on

JUL 4

AUG 12

ICF monies must be spent and returns provided by **23/09/2020**