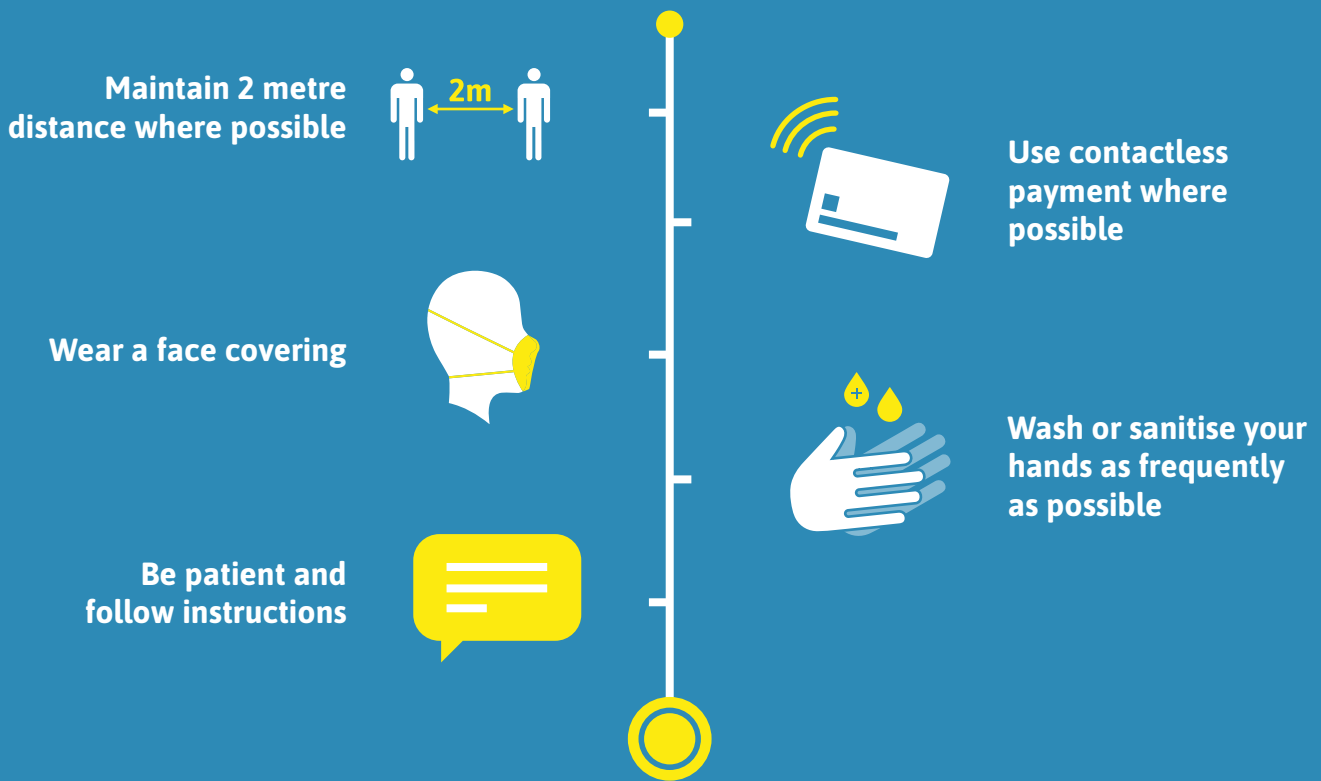


ON PUBLIC TRANSPORT



COMPLETING YOUR JOURNEY

When finishing your journey you should:



Follow guidance at your destination



Walk and cycle from public transport to your destination, where possible



Wash or sanitise your hands as soon as possible

PROTECT OURSELVES. PROTECT OTHERS. PROTECT NORFOLK.



Norfolk County Council
Public Health