

---

# Great Yarmouth Third River Crossing

---

---

## Statement of Community Consultation

---

Planning Act 2008

Infrastructure Planning

The Infrastructure Planning (Applications: Prescribed Forms and Procedure) Regulations 2009

**Document Reference:** 0.5 Statement of Community Consultation  
**Regulation Number:** Section 47 Planning Act 2008  
**Author:** Norfolk County Council



If you need this document printed in large print, Braille, alternative format, sound or other language, please email [gy3rc-st3consultation@norfolk.gov.uk](mailto:gy3rc-st3consultation@norfolk.gov.uk), contact customer service at 0344 800 8020 or text message at 18001 0344 800 8020 (text phone) and we will try to help you.



If you need this document printed in large print, Braille, alternative format, sound or other language, please email [gy3rc-st3consultation@norfolk.gov.uk](mailto:gy3rc-st3consultation@norfolk.gov.uk), contact customer service at 0344 800 8020 or text message at 18001 0344 800 8020 (text phone) and we will try to help you.

Ak potrebujete tento dokument vytlačený veľkým písmom, Braillovým písmom, v alternatívnom formáte, vo zvukovej forme alebo v inom jazyku, pošlite e-mailovú správu na adresu [gy3rc-st3consultation@norfolk.gov.uk](mailto:gy3rc-st3consultation@norfolk.gov.uk), kontaktujte oddelenie služieb zákazníkom na čísle 0344 800 8020 alebo pošlite textovú správu na 18001 0344 800 8020 (textový telefón) a vynasnažíme sa pomôcť vám.

Если вам необходимо распечатать этот документ крупным шрифтом, шрифтом Брайля, а также если этот документ нужен вам в аудио-формате, альтернативном формате или на другом языке, отправьте сообщение на адрес электронной почты [gy3rc-st3consultation@norfolk.gov.uk](mailto:gy3rc-st3consultation@norfolk.gov.uk), обратитесь в центр обслуживания клиентов по телефону 0344 800 8020 или службу для людей с ограниченными возможностями по номеру 18001 0344 800 8020 (текстофон), и мы сделаем все возможное, чтобы вам помочь.

Se precisar deste documento com caracteres grandes, em Braille, num formato alternativo, em áudio ou noutra idioma, envie, por favor, um e-mail para [gy3rc-st3consultation@norfolk.gov.uk](mailto:gy3rc-st3consultation@norfolk.gov.uk), contacte o Serviço de Apoio ao Cliente através do 0344 800 8020 ou envie uma mensagem de texto para o 18001 0344 800 8020 (telefone de texto) e faremos o nosso melhor para o/a ajudar.

Jei norétumėte šį dokumentą gauti dideliu šriftu, garso įrašū, Brailio raštu, kitu formatu ar kita kalba, atsiųskite el. laišką [gy3rc-st3consultation@norfolk.gov.uk](mailto:gy3rc-st3consultation@norfolk.gov.uk), susisiekite su klientų aptarnavimo centru tel. 0344 800 8020, arba teksto atpasakojimo numeriu 18001 0344 800 8020 (tekstinis telefonas) ir mes pasistengsime jums padėti.

Aby otrzymać ten dokument wydrukowany większą czcionką, zapisany alfabetem Braille'a, w innym formacie, w postaci dźwiękowej lub w innym języku, prosimy o wysłanie wiadomości e-mail na adres [gy3rc-st3consultation@norfolk.gov.uk](mailto:gy3rc-st3consultation@norfolk.gov.uk) albo kontakt z Obsługą Klienta pod numerem 0344 800 8020 lub pod numerem telefonu tekstowego 18001 0344 800 8020, a dołożymy wszelkich starań, aby udzielić pomocy.

**Great Yarmouth Third River Crossing**  
**Statement of Community Consultation**  
**(Published under Section 47(6) of the Planning Act 2008)**

<b>Table of Contents</b>	<b>Page</b>
1.0 This Statement of Community Consultation	1
2.0 The Proposed Scheme	3
3.0 The Application Process	5
4.0 Previous Consultations (Stages 1 and 2)	7
5.0 Statutory Pre-application Consultations (Stage 3)	8
6.0 Environmental Information	13
7.0 Consultation Feedback	14

**Appendices**

Appendix A – Key Elements of Scheme Proposal

Appendix B – Consultation Leaflet Delivery Area

Appendix C – Consultation Brochure and Consultation Leaflet Delivery to Parish Councils

<b>Revision</b>	<b>Date</b>	<b>Issued by</b>	<b>Comments</b>
2	14/7/18	G Broad	Final Issue for Publishing

---



## 1.0 This Statement of Community Consultation

- 1.1 This Statement of Community Consultation (SoCC) sets out when and how Norfolk County Council (NCC) proposes to undertake pre-application consultations with the local community on the Great Yarmouth Third River Crossing (“the Proposed Scheme”). The SoCC provides background on the Proposed Scheme and outlines where additional information can be found. Further, it details how comments on the Proposed Scheme can be made during the consultation process.
- 1.2 This SoCC has been prepared and published in accordance with Section 47 of the Planning Act 2008, and NCC has had regard to the Secretary of State’s Guidance<sup>1</sup> as required by section 50(3). It is also a requirement of Section 47 that applicants carry out their consultation in accordance with the SoCC. A consultation on the contents of this SoCC has been undertaken with the relevant Local Authorities responsible for the area where the Proposed Scheme will be constructed, and regard has been given to their responses, in line with Section 47(5) of the Planning Act 2008.
- 1.3 Specifically, NCC consulted relevant services within NCC on 22 May 2018 (with a response from NCC Planning Services received on 21 June 2018, which also included a response from NCC lead local flood authority dated 12 June 2018) and Great Yarmouth Borough Council on 22 May 2018 (with a response received on 20 June 2018).
- 1.4 Details contained within this SoCC are as follows:

<b>The Proposed Scheme</b>	Summary of the Proposed Scheme and its objectives.
<b>The Application Process</b>	Explanation of the application process for development consent.
<b>Previous Consultations</b>	Summary of the consultations previously undertaken prior to those detailed in this SoCC.
<b>Statutory Pre-Application Consultations</b>	Details of the proposed pre-application consultations including: <ul style="list-style-type: none"> <li>• What we are consulting on,</li> <li>• How we will consult,</li> <li>• Who we will consult.</li> </ul>
<b>Environmental Information</b>	Explanation of how details of the Environmental Impact Assessments can be obtained.
<b>Consultation Feedback</b>	Information on how responses to the proposals can be made and how we will use these responses.

- 1.5 The statutory pre-application consultations with the local community will commence at 00:00hrs on 20 August 2018 and the deadline for responses is 23:59hrs on 5 October 2018.

<sup>1</sup> “Planning Act 2008: Guidance on the pre-application process” – Department for Communities and Local Government March 2015

- 1.6 This SoCC was published on 3 August 2018 and will be available to inspect at the Consultation Events (Section 5.6.3), Consultation Document Deposit Locations (See Section 5.7) and online at [www.norfolk.gov.uk/3rc](http://www.norfolk.gov.uk/3rc).

## 2.0 The Proposed Scheme

2.1 The Proposed Scheme involves the construction, operation and maintenance of the new crossing of the River Yare in Great Yarmouth. The Proposed Scheme consists of:

- A new dual carriageway road across the river, linking the A47 at Harfrey's Roundabout on the western side to the A1243 South Denes Road on the eastern side;
- An opening span double leaf bascule bridge across the river, including structures to support and accommodate operational requirements of the opening mechanism, including counterweights either at, above or below the bridge deck. This may involve the construction of two new 'knuckles' that extend the quay wall into the river;
- A new five-arm roundabout connecting the new crossing with Suffolk Road, William Adams Way and the western end of Queen Anne's Road;
- A single span bridge over Southtown Road, with either reinforced earth embankments or embankments retained by reinforced earth walls, or a combination of these, joining that bridge to the new roundabout at William Adams Way;
- The closure of Queen Anne's Road at its junction with Suffolk Road, and the opening of a new priority junction onto Southtown Road providing access to the Queen Anne's Road residential area;
- Revised access arrangements for existing businesses onto the local highway network;
- Dedicated provision for cyclists and pedestrians which tie into existing networks;
- A control tower structure located in proximity to the crossing on the western side of the river. The control tower will facilitate the 24/7 operation of the opening span of the new double leaf bascule bridge;
- The demolition of an existing pedestrian bridge on William Adams Way;
- Provision of small vessel waiting facilities to the north and south of the crossing, either as floating pontoons or additional fendering to the existing berths, including any dredging and quay strengthening works that may be required;
- Provision of a large vessel waiting facility, if deemed necessary following a navigation risk assessment, at a remote location south of the crossing, including any dredging, quay strengthening, fendering and mooring alterations required;
- Additional variable message signage to assist the movement of traffic in response to network conditions and the openings / closings of the double leaf bascule bridge;
- Provision of drainage infrastructure, lighting and landscaping.

2.2 The key elements of the Proposed Scheme are shown in Appendix A.

2.3 The main objectives of the Proposed Scheme are as follows:

- To support Great Yarmouth as a centre for both offshore renewable energy and the offshore oil and gas industry, enabling the delivery of

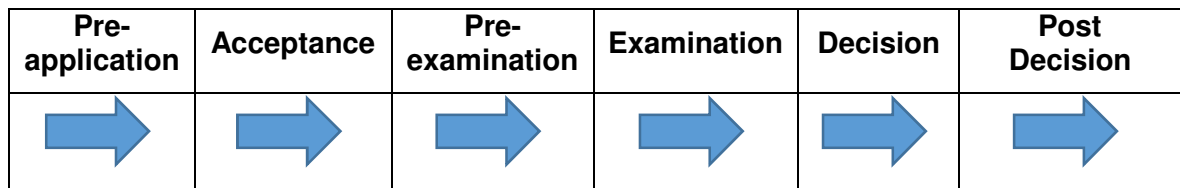
renewable energy Nationally Significant Infrastructure Projects and enhancing the port's role as an international gateway;

- To improve access and strategic connectivity between Great Yarmouth port and the national road network thereby supporting and promoting economic and employment growth (particularly in the Enterprise Zone);
- To support the regeneration of Great Yarmouth, including the town centre and seafront, helping the visitor and retail economy;
- To improve regional and local access by enhancing the resilience of the local road network, reducing congestion and improving journey time reliability;
- To improve safety and to reduce road casualties and accidents, in part by reducing heavy traffic from unsuitable routes within the town centre;
- To improve access to and from the Great Yarmouth peninsula for pedestrians, cyclists and buses, encouraging more sustainable modes of transport and also reducing community severance;
- To protect and enhance the environment by reducing emissions of greenhouse gases and minimising the environmental impact of the Proposed Scheme.



### **3.0 The Application Process**

- 3.1 On 26 January 2018, NCC formally requested that the Secretary of State for Transport should use the power under Section 35 of the Planning Act 2008 to direct that the Proposed Scheme, and any associated matters, should be treated as development for which development consent is required.
- 3.2 In the Direction of 26 February 2018, the Secretary of State confirmed that he was satisfied that the Proposed Scheme is nationally significant. He therefore directed that the Proposed Scheme, and any associated matters, is to be treated as development for which development consent is required. The effect of the Direction is that progression and assessment of the Proposed Scheme will take place under the Planning Act 2008's consenting regime for nationally significant infrastructure projects. Where a project is authorised under this regime, that will remove the need for planning permission and, where appropriate, other consents and permissions which the Proposed Scheme would require if the Direction had not been made.
- 3.3 A copy of the Secretary of State's Direction is available on NCC's website: ([www.norfolk.gov.uk/3rc](http://www.norfolk.gov.uk/3rc)).
- 3.4 In order to progress the Proposed Scheme, NCC therefore intends to make an application under the Planning Act 2008 for a Development Consent Order (DCO) in order to obtain the necessary consents to construct, operate and maintain the Proposed Scheme. This application will be made to the Secretary of State for Transport, who makes the decision on applications concerning transport infrastructure projects.
- 3.5 NCC expects that a DCO application for the Proposed Scheme will be submitted to the Planning Inspectorate (PINS) in Spring 2019.
- 3.6 PINS is responsible for administering the DCO process on behalf of the Secretary of State. This includes the appointment of Inspectors to act as the "Examining Authority" who will examine applications for DCOs and provide recommendations to the Secretary of State for Transport, who then decides whether the DCO should be made. Further information on this process can be found on PINS (National Infrastructure Planning) website: <https://infrastructure.planninginspectorate.gov.uk/>.
- 3.7 A DCO, if granted, would give consent for the construction, operation and maintenance of the Proposed Scheme. A DCO can also include provisions about related matters, such as compulsory acquisition of land, road closures, new or altered roads and matters concerning the River Yare (including, potentially, a Deemed Marine Licence). The DCO can impose any requirements which the Secretary of State considers appropriate. It is important to note that a DCO can replace the need to obtain most other permissions and consents which a project would otherwise need. The effect is that the DCO process may well be the only opportunity that the community will have to engage with the Proposed Scheme and influence whether the Proposed Scheme should receive consent (and if so on what terms).
- 3.8 A summary of the DCO process is shown by the diagram below and described in the subsequent paragraphs 3.9 to 3.14.
-



- 3.9 **Pre-application** - During this period the scheme proposals are developed and the statutory pre-application consultation is undertaken.
- 3.10 **Acceptance** - PINS, on behalf of the Secretary of State for Housing, Communities and Local Government, has 28 days to decide whether the application meets the required standards to proceed to examination. Before a DCO application is accepted, the Secretary of State must be satisfied that the applicant has carried out effective pre-application consultation in accordance with the Planning Act 2008 with both specified consultees and the local community. This pre-application consultation is a key part of the DCO process.
- 3.11 **Pre-examination** - If the application for a DCO is accepted by PINS, the application will be the subject of notification and publicity to be carried out by NCC. The public will be able to register with PINS and provide a written summary of their views on the application, which will enable them to become an Interested Party. Preparation for the Examination will take place, including a Preliminary Meeting which Interested Parties will be invited to attend. This process generally takes in the region of three months (and is called the 'pre-examination' stage).
- 3.12 **Examination** - During the DCO examination, those who have previously registered to have their say as Interested Parties will be invited to provide more details of their views in writing and can also request Open Floor Hearings and Compulsory Acquisition Hearings. The Examining Authority may also decide to hold hearings, in particular to examine specific issues. The Examination period lasts up to six months.
- 3.13 **Decision** - Within three months of the examination period concluding the Examining Authority will make a recommendation to the Secretary of State for Transport, who will then decide, generally within a statutory period of three months, whether to make the DCO.
- 3.14 **Post Decision** – There is an opportunity for legal challenge to a decision to make a DCO.
- 3.15 The application for the Proposed Scheme is being prepared in line with relevant national policy, primarily the National Networks National Policy Statement 2015, which provides the policy context for nationally significant road and rail projects. Further information can be found on the following website: <https://www.gov.uk/government/publications/national-policy-statement-for-national-networks>.

#### 4.0 Previous Consultations (Stages 1 and 2)

- 4.1 NCC has been undertaking consultations on the Proposed Scheme since 2009. More recently, NCC has adopted a three stage consultation process as follows:

<b>Stage</b>	<b>Purpose</b>
<p><b><u>Stage 1 (Nov 2016 – Jan 2017)</u></b> Initial engagement non-statutory consultation.</p>	<p>To invite and assess views on congestion within Great Yarmouth and the surrounding area, to share emerging proposals and to understand the level of support for the Proposed Scheme.</p>
<p><b><u>Stage 2 (Sept – Oct 2017)</u></b> Scheme development non-statutory consultation.</p>	<p>To invite and assess views on the Proposed Scheme development work so far.</p>
<p><b><u>Stage 3 (Planned for Aug – Oct 2018)</u></b> Statutory pre-application consultation.</p>	<p>To provide updated details on the Proposed Scheme and to invite and assess views on it, before an application for a DCO is submitted.</p>

- 4.2 NCC has listened to what local people and other parties have had to say during the non-statutory Stage 1 and 2 consultations, which has assisted the development of the proposals.
- 4.3 The consultations detailed in this SoCC are the Stage 3 statutory pre-application consultations identified in the above table. This is being undertaken to seek views on the Proposed Scheme to inform its refinement and, where appropriate, revision prior to making the application for a DCO.

## **5.0 Statutory Pre-application Consultations (Stage 3)**

### **5.1 What specific matters are we seeking comments on?**

5.1.1 The Consultation will invite comment and seek views on the information provided, which will include:

- The principle of, need for and design of the Proposed Scheme (including alternative ways of meeting the need);
- Detailed proposals for the Proposed Scheme including bridge alignment, junction layouts, works on existing roads and side roads, and design details;
- Preliminary environmental information relating to the construction, operation and maintenance of the Proposed Scheme - provided by the Preliminary Environmental Information Report (PEIR) and the non-technical summary;
- Potential impacts of the Proposed Scheme on traffic (and possible mitigation measures);
- Potential impacts of the Proposed Scheme on port related activities and river vessel movements.

### **5.2 When will the Consultation be held?**

5.2.1 NCC will hold a consultation with the local community between 00:00hrs on 20 August 2018 and 23.59hrs on 5 October 2018. It is important that feedback is provided during the Consultation Period to inform the ongoing development and design of the Proposed Scheme. Further details of this consultation are provided below.

### **5.3 Who will be able to comment on the Proposed Scheme?**

5.3.1 The Consultation will be open to anyone who wishes to express a view on the Proposed Scheme.

### **5.4 How will the Consultation be communicated?**

5.4.1 NCC wishes to ensure that local communities, businesses, stakeholders and interest groups have an opportunity to fully understand and comment on the Proposed Scheme.

5.4.2 The Consultation will be widely advertised in local media and using social media such as Facebook and Twitter. Notices pursuant to Section 47 of the Planning Act 2008 will be published in the Eastern Daily Press and Great Yarmouth Mercury newspapers.

5.4.3 In addition to the community consultation, which is the subject of this SoCC, separate pre-application consultation will take place with certain prescribed bodies, affected land owners and local authorities in accordance with Section 42 of the Planning Act 2008. A notice will also be published (in accordance with Section 48 of the Planning Act 2008) in the Eastern Daily Press, Great Yarmouth Mercury, The Times and the London Gazette advertising the Proposed Scheme. These consultations and notices will contain appropriate details of the Proposed Scheme, the intention to submit an application for a DCO and the Preliminary Environmental Information, together with details of how and when to provide feedback.

## 5.5 What documents will be produced?

### 5.5.1 NCC will produce the following Consultation Documents:

- **Consultation Leaflet:** The Consultation Leaflet will include details of the Public Exhibitions and Consultation Events and how to provide feedback. It will be produced to help publicise the Public Exhibitions and Consultation Events and will be sent to residential and business addresses within the vicinity of the Proposed Scheme (area shown on plan in Appendix B) using the latest available address information;
- **Consultation Brochure and Consultation Questionnaire:** The Consultation Brochure will contain a more detailed summary of the project proposals and the potential impacts. It will be accompanied by a Consultation Questionnaire to facilitate comments on the Proposed Scheme. Specific questions will be asked in the Consultation Questionnaire, but it will also give respondents an opportunity to raise any other issues if they wish. In addition to being available at the Public Exhibitions and Consultation Events these documents will be sent to parish councils located within or adjacent to the Great Yarmouth Borough Council administrative area (parish councils shown on plan in Appendix C);
- **Preliminary Environmental Information Report (PEIR):** The Proposed Scheme is EIA development for the purposes of the Infrastructure Planning (Environmental Impact Assessment) Regulations 2017 (the EIA Regulations). It will therefore require environmental impact assessment under the EIA Regulations and an Environmental Statement (ES) will accompany the application for a DCO. The PEIR provides preliminary environmental information, and will be available as part of the community consultations detailed in this SoCC. It will also be sent in electronic form (and made available in paper form on request) to the consultation bodies prescribed by the EIA Regulations and everyone required to be consulted by section 42 of the Planning Act 2008. The PEIR will provide information at a level appropriate to allow consultees to develop an informed view of the likely significant environmental effects of the Proposed Scheme and will include details of the Proposed Scheme, the anticipated likely significant effects of the Proposed Scheme on the environment, the envisaged mitigation or compensatory measures, and the reasonable alternatives considered.
- **Non-Technical Summary of the PEIR:** A summary of the key information in the PEIR will also be made available in a Non-Technical Summary of the PEIR;
- **Non-Technical Note on Transport Modelling:** This will explain the process used to produce the traffic flow forecasts provided in the Consultation Documents;
- **Design Process Summary:** This will explain the design rationale for the Proposed Scheme;
- **Questions and Answers:** Answers will be provided to commonly posed questions.

5.5.2 In addition to the Consultation Documents detailed in Section 5.5.1 above, the following consultation materials will be produced:

- **Consultation Posters:** To be displayed at certain public locations to advertise the consultation;
- **Public Exhibition Information Boards:** These will be provided to help inform at the Public Exhibitions and Consultation Events, and will include a summary of the Proposed Scheme and its potential impacts.

5.6 How will we consult?

5.6.1 **Project Website:** Web pages for the Proposed Scheme on NCC's website have been set up, and will be updated to include the latest scheme information. They are available at this location: [www.norfolk.gov.uk/3rc](http://www.norfolk.gov.uk/3rc) and will include details regarding the pre-application consultation. All the Consultation Documents listed under Section 5.5.1 and the Public Exhibition information boards above will be available on the project website.

5.6.2 **Public Exhibitions:** A series of Public Exhibitions (unstaffed) will be held at the times and venues detailed below to give people the opportunity to view the scheme proposals. The Public Exhibitions will contain information boards together the Consultation Documents listed under Section 5.5.1.

Venue	Date	Time
<b>Great Yarmouth Library</b> Tolhouse Street Great Yarmouth NR30 2SH	Monday 20 August 2018 to Saturday 25 August 2018	Monday: 12pm-5pm Tuesday: 9am-5pm Wednesday: 9am-7:30pm Thursday: 9am-5pm Friday: 9am-5pm Saturday: 9am-4:30pm
<b>Priory Centre</b> Priory Plain Great Yarmouth NR30 1NW	Tuesday 28 August 2018 to Saturday 1 September 2018	Tuesday: 12pm-9pm Wednesday: 8:30am- 12:45pm and 4pm-9pm Thursday: 8:30am-9pm Friday: 8:30am-12:45pm and 4pm-9pm Saturday: 8am-4pm
<b>Gorleston Library</b> Lowestoft Road Gorleston-on-Sea Great Yarmouth NR31 6SG	Monday 3 September 2018 to Saturday 8 September 2018	Monday: 12pm-5pm Tuesday: 9:30am-8pm Wednesday: 9:30am-5pm Thursday: 9:30am-8pm Friday: 9:30am-5pm Saturday: 9:30am-4pm
<b>Kings Centre</b> 30 Queen Anne's Road Southtown Great Yarmouth NR31 0LE	Tuesday 11 September 2018 to Saturday 15 September 2018	Tuesday: 12pm-5pm Wednesday: 9am-9pm Thursday: 9am-5pm Friday: 9am-5pm Saturday: 9am-4pm

Two smaller publicity exhibitions, containing scheme information and details of how to participate in this consultation will be on display between 20 August 2018 and 5 October 2018 in the reception areas of Great Yarmouth Town Hall and County Hall, Norwich.

**5.6.3 Consultation Events:** Consultation Events, that will include the Public Exhibition information boards, will be held at the locations and dates/times detailed in the table below. All the Consultation Documents listed under Section 5.5.1, and those listed under Section 5.5.2 above, together with this SoCC, will be available at these Consultation Events. These documents can be taken away from the Consultation Events free of charge, with the exception of the PEIR, for which a charge of £10 will be made. The Consultation Events will be staffed to allow people to hold face-to-face discussions with the project team.

<b>Venue</b>	<b>Date</b>	<b>Time</b>
<b>Great Yarmouth Library</b> Tolhouse Street Great Yarmouth NR30 2SH	Saturday 25 August 2018	10:00am to 4:30pm
<b>Priory Centre</b> Priory Plain Great Yarmouth NR30 1NW	Thursday 30 August 2018	10:00am to 9:00pm
<b>Gorleston Library</b> Lowestoft Road Gorleston-on-Sea Great Yarmouth NR31 6SG	Tuesday 4 September 2018	10:00am to 8:00pm
<b>Kings Centre</b> 30 Queen Annes Road Southtown Great Yarmouth NR31 0LE	Wednesday 12 September 2018	10:00am to 8:00pm

**5.7 Consultation Document Deposit Locations:** For those that cannot attend the exhibitions all the Consultation Documents listed under Section 5.5.1 above, together with this SoCC, will be available to view at the following Consultation Document Deposit Locations between 20 August 2018 and 5 October 2018:

- Great Yarmouth Library – Tolhouse Street, Great Yarmouth, NR30 2SH;
- Gorleston Library – Lowestoft Road, Gorleston-on-Sea, Great Yarmouth, NR31 6SG;
- Priory Centre, Priory Plain, Great Yarmouth, NR30 1NW;
- Kings Centre – 30 Queen Annes Road, Southtown, Great Yarmouth, NR31 0LE;
- Great Yarmouth Town Hall – Hall Plain, Great Yarmouth, NR30 2QF;
- The Archive Centre, County Hall, Martineau Lane, Norwich, NR1 2DQ.

**5.8 Obtaining Copies of Consultation Documents:** Paper copies of the Consultation Documents can also be requested from NCC using the same contact details in Section 7.1 between 20 August 2018 and 5 October 2018. Consultation Documents will be made available free of charge, with the exception of the PEIR, for which a charge of £10 will be made. It will also be

possible for documents to be photocopied at Great Yarmouth Library and Gorleston Library although charges will apply for photocopying.

- 5.9 **Political Engagement:** The Consultation Brochure, Consultation Leaflet, and Consultation Questionnaire will be provided for local politicians (borough/county councillors, MPs and MEPs) whose constituencies are within the vicinity of the Proposed Scheme.
- 5.10 **Stakeholder Holders:** NCC has previously held meetings with a number of stakeholders and will continue to do so before, during and after the Consultation. When invited, and where it is possible to do so, the project team will attend meetings with other stakeholder groups interested in the Proposed Scheme.
- 5.11 **Hard to Reach Groups:** NCC wishes to involve a wide range of the community in the pre-application consultation by:
- Consultation Posters will be erected at various on-street locations in the vicinity of the Proposed Scheme. The consultation poster will also be erected in local colleges, shopping centres/supermarkets, medical centres, and the tourist information centre;
  - NCC will also attempt to contact local minority groups so that they can be informed of and engaged with the consultation;
  - If required NCC can provide the consultation material in an alternative format or in a different language (see contact details on the inside of the front page of this SoCC).



## **6.0 Environmental Information**

- 6.1 Preliminary environmental information will be available to view on NCC's website and in the Consultation Document Deposit Locations listed in Section 5.7 of this SoCC. Hard copies of the Consultation Materials can also be requested (free of charge) from NCC, with the exception of the PEIR, for which a charge of £10 will be made.

## 7.0 Consultation Feedback

- 7.1 Comments on the Proposed Scheme and the Consultation can be made using the following methods:
- Completing a Consultation Questionnaire at the exhibitions or on-line at [www.norfolk.gov.uk/3rc](http://www.norfolk.gov.uk/3rc);
  - Emailing comments to [gy3rc-st3consultation@norfolk.gov.uk](mailto:gy3rc-st3consultation@norfolk.gov.uk);
  - Writing to: “Freepost Plus RTCL-XSTT-JZSK, Norfolk County Council, GY3RC, Ground floor - south wing, County Hall, Martineau Lane, Norwich NR1 2DH”.
- 7.2 NCC, as the applicant for a DCO must have regard to any relevant responses received. Responses made during the Consultation Period will be documented and carefully considered by NCC in further developing the Proposed Scheme. NCC will consider the materiality of any resulting changes to the Proposed Scheme. Depending on factors such as the degree of change, the effect on the local community and the level of public interest, these changes may present the need for further consultation, which may be targeted at specific locations or on particular issues. Any future public consultation will be publicised and held as considered appropriate to NCC at that time.
- 7.3 A Consultation Report will be produced to accompany the DCO application as required by Section 37(3)(c) of the Planning Act 2008, and will include an explanation of how comments received have helped to influence the scheme proposals. Anonymised consultation response may be published as part of this document.
- 7.4 Where any additional consultation responses and / or feedback is received after the date specified for receipt below, these will only be accepted and considered at the discretion of NCC. This decision will be based on, amongst other factors, the significance of the issues raised (including whether they have previously been raised by others) and the amount of time that may have elapsed since the conclusion of the Consultation Period and the need to secure progress towards submission of the application following the conclusion of the Consultation Period.
- 7.5 NCC will continue to update the project website during and after the Consultation Period.

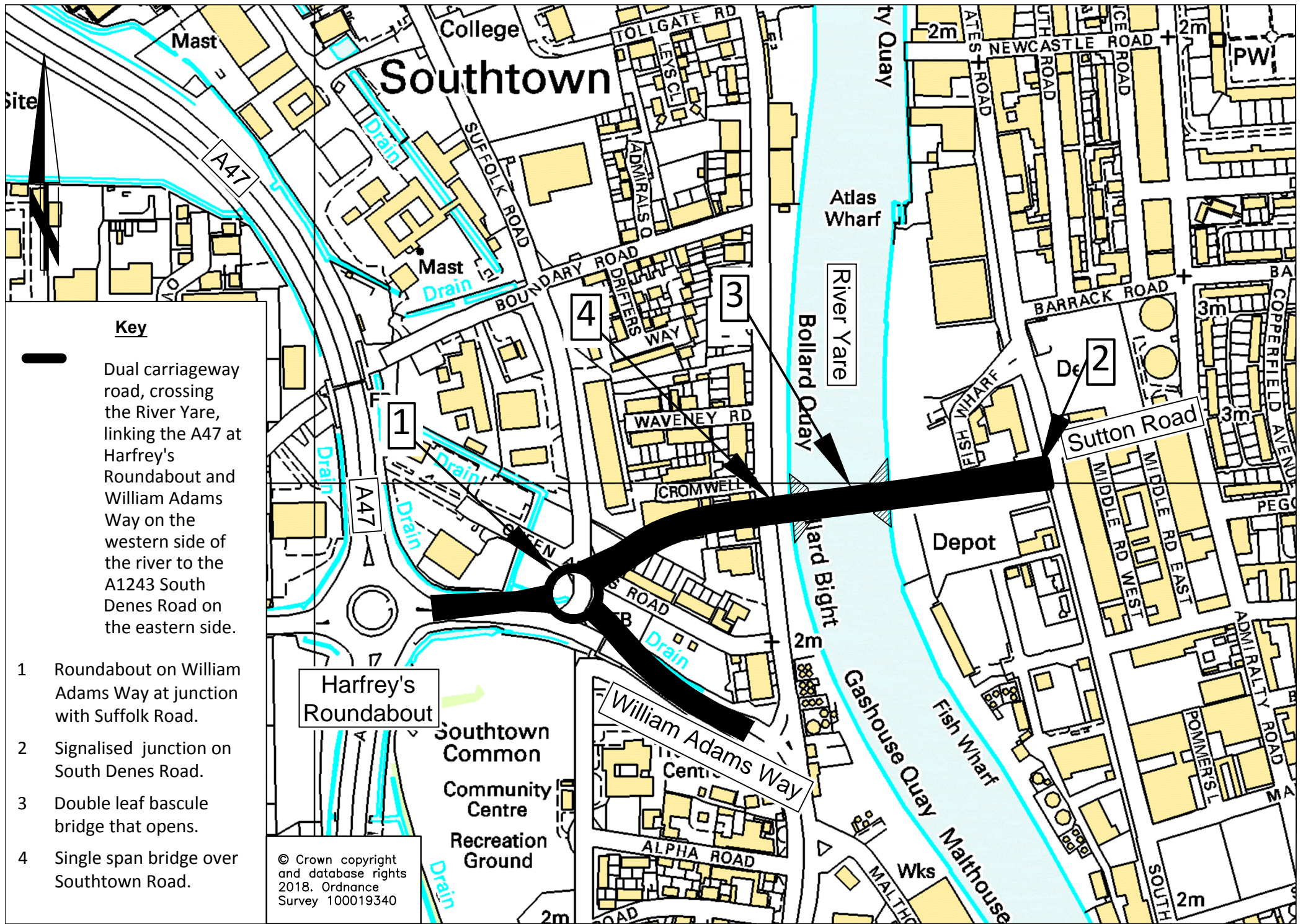
**The deadline for comments to be received as part of this pre-application consultation is 23:59hrs on Friday 5 October 2018.**

# **APPENDIX A**

Key Elements of Scheme Proposal







# Southtown

## Key

Dual carriageway road, crossing the River Yare, linking the A47 at Harfrey's Roundabout and William Adams Way on the western side of the river to the A1243 South Denes Road on the eastern side.

- 1 Roundabout on William Adams Way at junction with Suffolk Road.
- 2 Signalised junction on South Denes Road.
- 3 Double leaf bascule bridge that opens.
- 4 Single span bridge over Southtown Road.

© Crown copyright and database rights 2018. Ordnance Survey 100019340



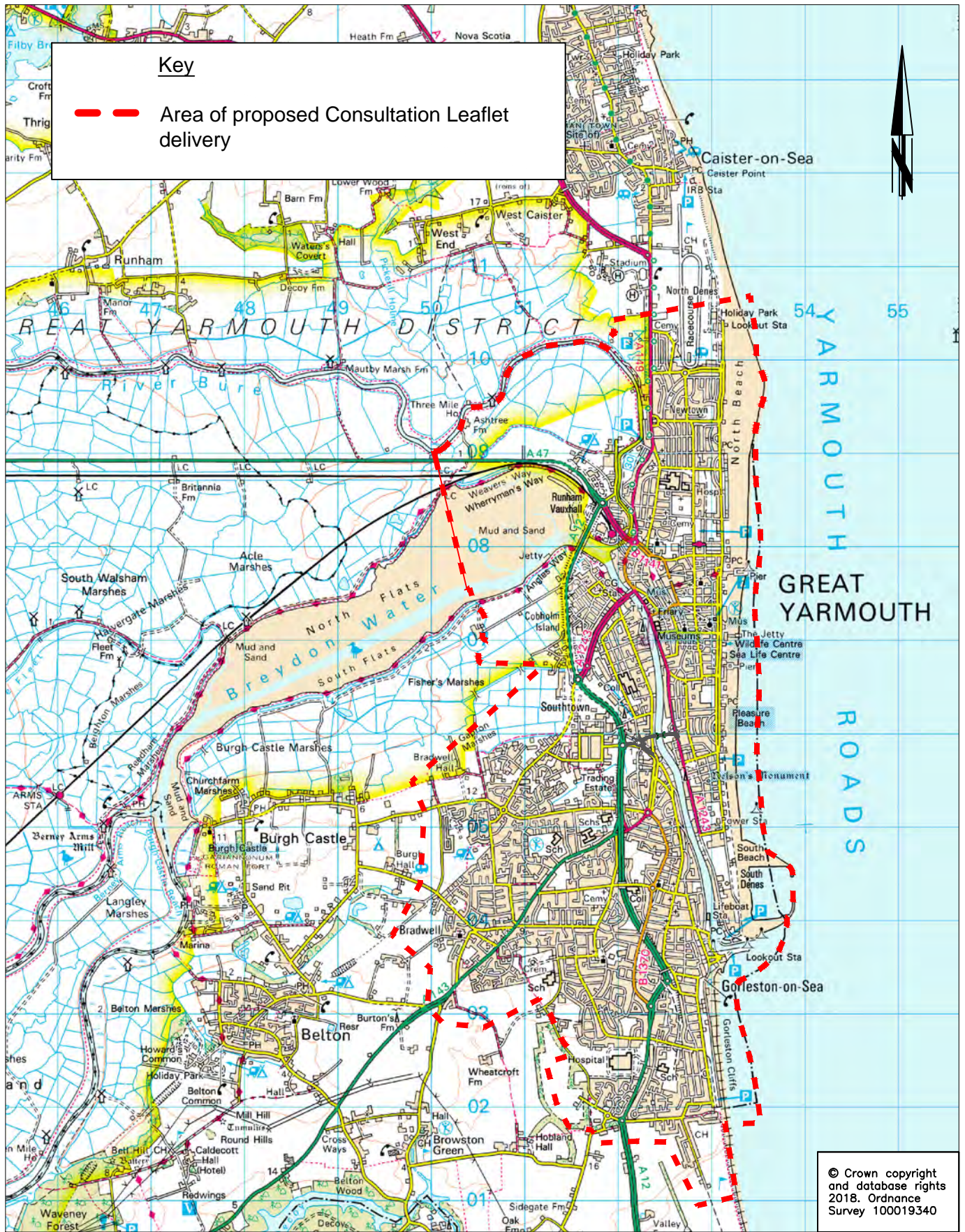
# **APPENDIX B**

Consultation Leaflet Delivery Area









Key

— — — — — Area of proposed Consultation Leaflet delivery

© Crown copyright and database rights 2018. Ordnance Survey 100019340



**DRAWING TITLE**

Great Yarmouth Third River Crossing  
Section 47 - Proposed Area of Consultation Leaflet Delivery

Tom McCabe  
Executive Director of  
Community and Environmental Services  
Norfolk County Council  
County Hall  
Martineau Lane  
Norwich NR1 2SG

REV.	DESCRIPTION	DRAWN	CHECKED	DATE

SURVEYED BY	INITIAL	DATE	DRAWING No.
			PKA018-MP-032
DESIGNED BY	KP	03/18	PROJECT TITLE
DRAWN BY	KP	03/18	Great Yarmouth Third River Crossing
CHECKED BY	GB	5/18	SCALE
			1:8000 @ A3
			FILE No.
			PKA018

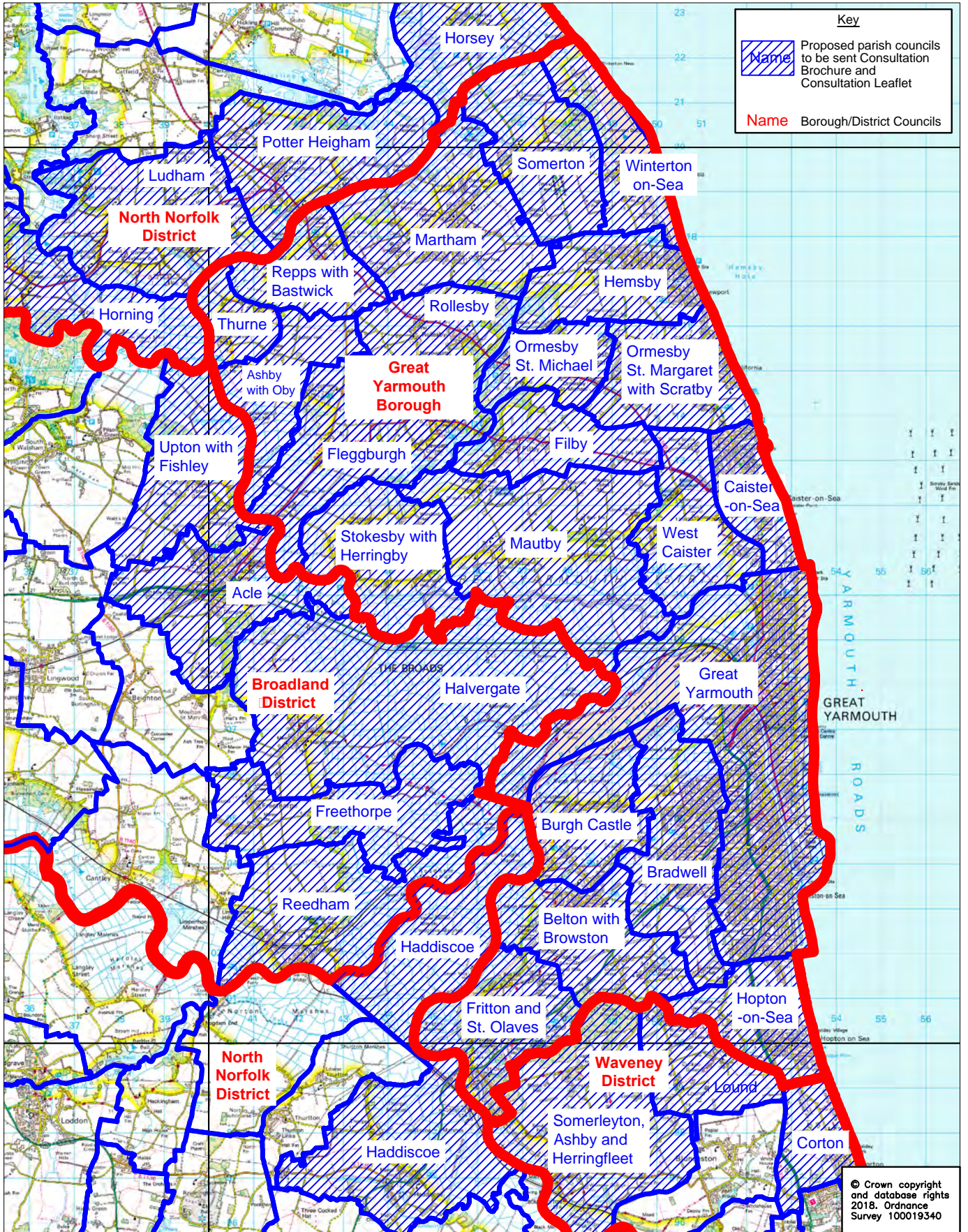


# **APPENDIX C**

Consultation Brochure and Consultation Leaflet Delivery to Parish Councils







**DRAWING TITLE**  
 Great Yarmouth Third River Crossing  
 Section 47 - Proposed Consultation Brochure  
 And Consultation Leaflet Delivery To Parish Councils

Tom McCabe  
 Executive Director of  
 Community and Environmental Services  
 Norfolk County Council  
 County Hall  
 Martineau Lane  
 Norwich NR1 2SG

REV.	DESCRIPTION	DRAWN	CHECKED	DATE

SURVEYED BY	INITIAL	DATE	DRAWING No.
OS	OS	2018	PKA018-MP-014
DESIGNED BY	KP	03/18	PROJECT TITLE
DRAWN BY	KP	03/18	Great Yarmouth Third River Crossing
CHECKED BY	GB	5/18	SCALE
			1:8000 @ A3
			FILE No.
			PKA018



If you need this document printed in large print, Braille, alternative format, sound or other language, please email [gy3rc-st3consultation@norfolk.gov.uk](mailto:gy3rc-st3consultation@norfolk.gov.uk), contact customer service at 0344 800 8020 or text message at 18001 0344 800 8020 (text phone) and we will try to help you.

Ak potrebujete tento dokument vytlačený veľkým písmom, Braillovým písmom, v alternatívnom formáte, vo zvukovej forme alebo v inom jazyku, pošlite e-mailovú správu na adresu [gy3rc-st3consultation@norfolk.gov.uk](mailto:gy3rc-st3consultation@norfolk.gov.uk), kontaktujte oddelenie služieb zákazníkom na čísle 0344 800 8020 alebo pošlite textovú správu na 18001 0344 800 8020 (textový telefón) a vynasnažíme sa pomôcť vám.

Если вам необходимо распечатать этот документ крупным шрифтом, шрифтом Брайля, а также если этот документ нужен вам в аудио-формате, альтернативном формате или на другом языке, отправьте сообщение на адрес электронной почты [gy3rc-st3consultation@norfolk.gov.uk](mailto:gy3rc-st3consultation@norfolk.gov.uk), обратитесь в центр обслуживания клиентов по телефону 0344 800 8020 или службу для людей с ограниченными возможностями по номеру 18001 0344 800 8020 (текстофон), и мы сделаем все возможное, чтобы вам помочь.

Se precisar deste documento com caracteres grandes, em Braille, num formato alternativo, em áudio ou noutra idioma, envie, por favor, um e-mail para [gy3rc-st3consultation@norfolk.gov.uk](mailto:gy3rc-st3consultation@norfolk.gov.uk), contacte o Serviço de Apoio ao Cliente através do 0344 800 8020 ou envie uma mensagem de texto para o 18001 0344 800 8020 (telefone de texto) e faremos o nosso melhor para o/a ajudar.

Jei norétumėte šį dokumentą gauti dideliu šriftu, garso įrašu, Brailio raštu, kitu formatu ar kita kalba, atsiųskite el. laišką [gy3rc-st3consultation@norfolk.gov.uk](mailto:gy3rc-st3consultation@norfolk.gov.uk), susisiekitė su klientų aptarnavimo centru tel. 0344 800 8020, arba teksto atpasakojimo numeriu 18001 0344 800 8020 (tekstinis telefonas) ir mes pasistengsime jums padėti.

Aby otrzymać ten dokument wydrukowany większą czcionką, zapisany alfabetem Braille'a, w innym formacie, w postaci dźwiękowej lub w innym języku, prosimy o wysłanie wiadomości e-mail na adres [gy3rc-st3consultation@norfolk.gov.uk](mailto:gy3rc-st3consultation@norfolk.gov.uk) albo kontakt z Obsługą Klienta pod numerem 0344 800 8020 lub pod numerem telefonu tekstowego 18001 0344 800 8020, a dołożymy wszelkich starań, aby udzielić pomocy.