

# S18

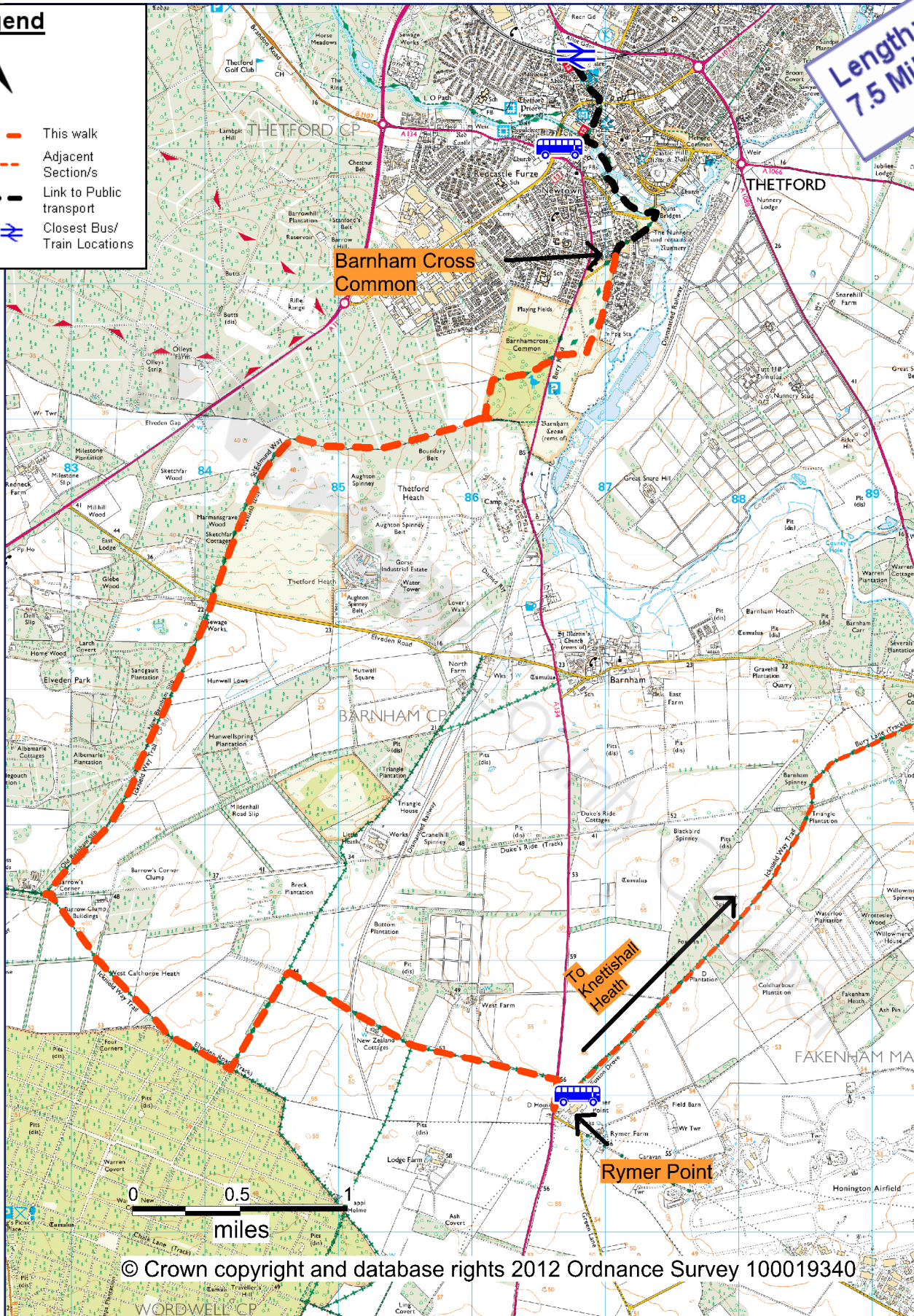
## Angles Way Short Section 18 (of 18) Rymer Point to Barnham Cross Common

### Legend



- This walk
- Adjacent Section/s
- Link to Public transport
- Closest Bus/ Train Locations

Length:  
7.5 Miles





## Along the way

Angles Way starts (or finishes – depends which way you are doing it!) at Barnham Cross Common on the edge of Thetford. This is Open Access land with lots of well walked paths; we have suggested one you might wish to follow across the common.

Much of the arable area of the Brecks is designated as SSSI for the internationally significant population of Stone Curlews which arrive to breed on the ground during the summer months. The forest area is home for rare birds including the woodlark and nightjar. The walk takes you through Thetford Heath, a typical Breck heath with acid and calcareous grassland, rare heathland birds and plants.

On the way to Barnham Cross Common, you are surrounded by the Brecks countryside with a wealth of national and international designations reflecting the unique nature of the area. The common itself is designated as a Site of Special Scientific Interest (SSSI) and has a number of the rare plants associated with The Brecks such as Spanish Catchfly and Purple-Stemmed Cat's Tail.

Thetford is one of the most ancient settlements in Norfolk with a wealth of history and activity dating back to Neolithic times over 4,500 years ago. Set at an important crossing point of the Little Ouse River, the name of Thetford is derived from the Anglo-Saxon *Theodford* or *peoples ford*. The nearby River Thet was named after the town.

Take time to explore the town by visiting one of several town museums, have a look at the impressive historic earthworks in Castle Park or the Cluniac Priory in Abbeygate or simply enjoy the hustle and bustle of the Tuesday or Saturday markets.

Blue pedestrian walking and cycling signs indicate the way between Barnham Cross Common and Thetford Town centre via Nuns' Bridges and Spring Walk.

## Walk summary

Start or finish Angles Way with a 7.5 mile walk between Barnham Cross Common and the bus stop on the A134 at Rymer Point and enjoy the stunning Brecks landscape.

## Getting started

This section is between the bus stop at Rymer Point on the A134 (TL866758) and Barnham Cross Common, Thetford (TL870822).

## Getting there

**Bus service** Coach Service's no. 84 and 86

**Bus Stop** Rymer Point bus stop, Rymer Farm, A134, Thetford bus station, Riverside Walk, Thetford, several services

Traveline enquiries: 0871 200 22 33.

[www.travelineeastanglia.org.uk](http://www.travelineeastanglia.org.uk)

**Train** Thetford rail station, Station Road, Thetford

National Rail enquiries: 08457 484950.

[www.nationalrail.co.uk/](http://www.nationalrail.co.uk/)

## Maps and guides

Ordnance Survey Explorer Map Thetford Forest 229, available from Ordnance Survey shop

[www.ordnancesurvey.co.uk/oswebsite](http://www.ordnancesurvey.co.uk/oswebsite)

## What to expect

Sandy byways, footpaths, common land and the busy A134 to cross twice.

## Facilities

Parking, toilets, accommodation, pubs, cafes, shops (Thetford only)

Further information about planning a break in this area is available from [www.brecks.org](http://www.brecks.org)



[www.norfolk.gov.uk/trails](http://www.norfolk.gov.uk/trails)

