

# **Norfolk Minerals and Waste Development Framework**

## **Revised Policies Map: amendments as a result of the adoption of the Single Issue Silica Sand Review**

**December 2017**

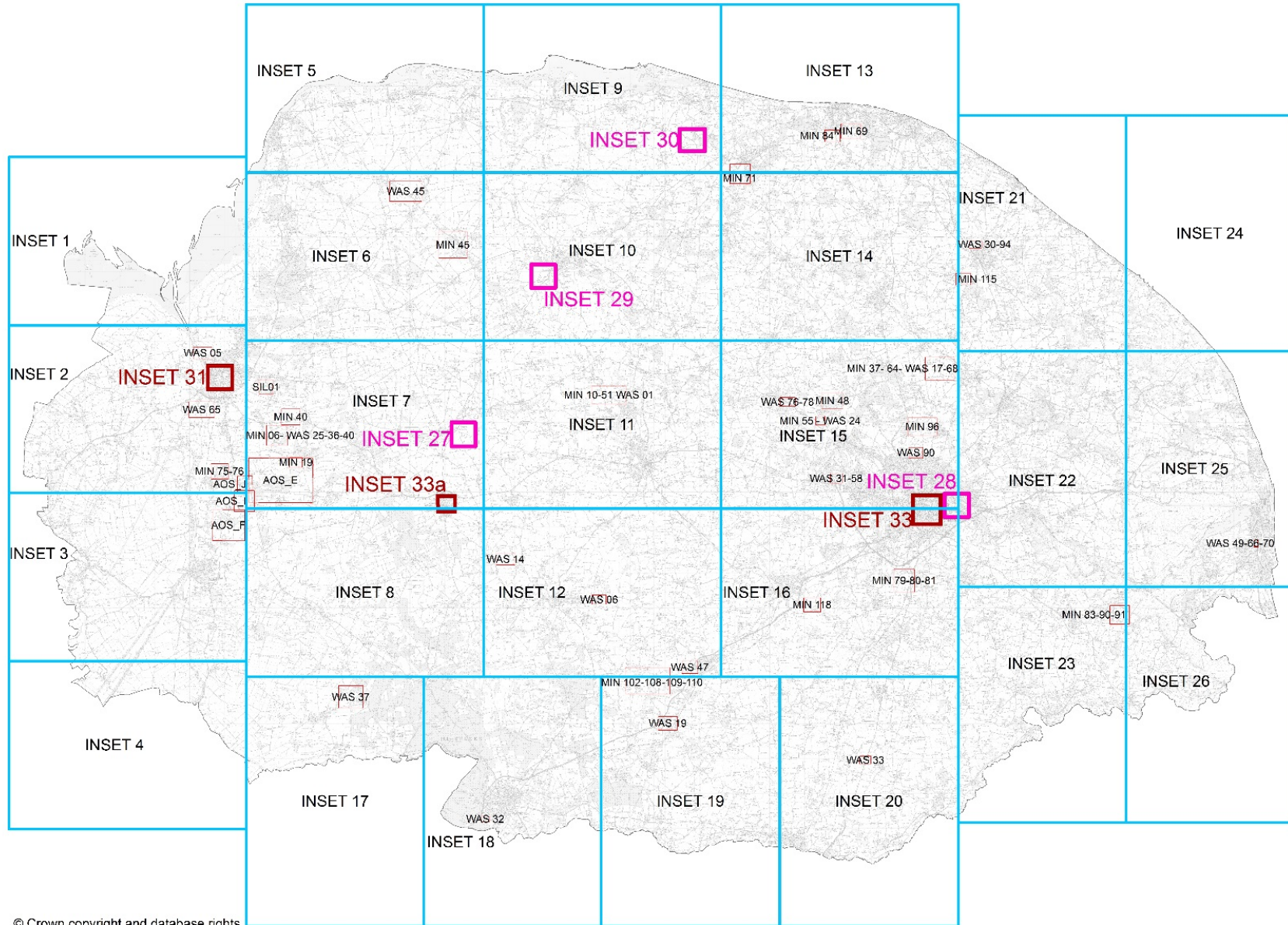
**Norfolk County Council**

**Community and Environmental Services Department**

The amended sections of the Revised Policies Map, due to the adoption of the Single Issue Silica Sand Review of the Minerals Site Specific Allocations Development Plan Document, are:

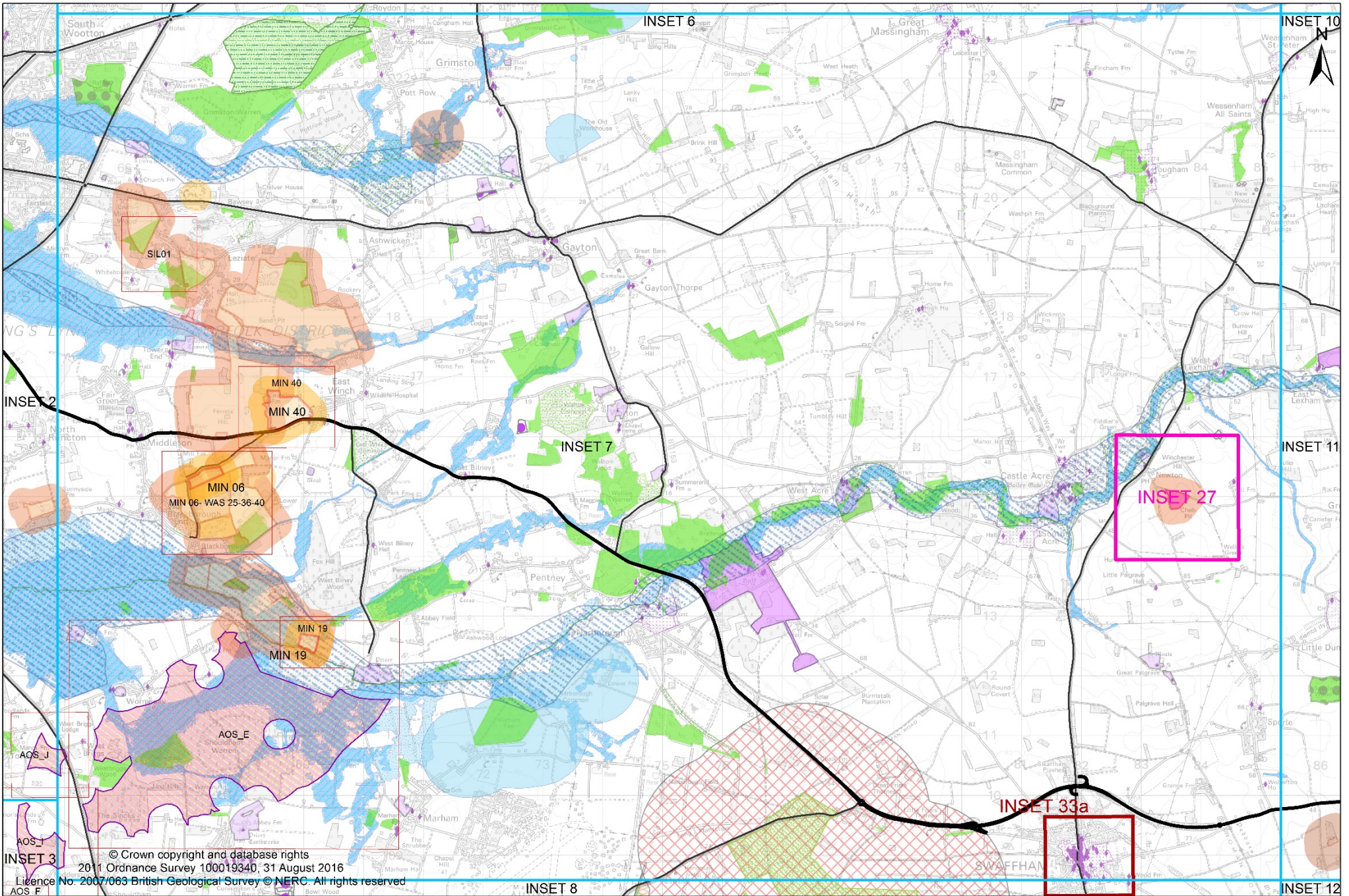
- Inset Plan (to show the new insets for the Specific Site and Areas of Search allocated for future silica sand extraction)
- Revised Inset 7 (to show the new insets for the Specific Site and Areas of Search allocated for future silica sand extraction and the new Swaffham AQMA)
- Revised Inset 8 (to show the new Swaffham AQMA)
- New insets for AOS\_E, AOS\_F, AOS\_I, AOS\_J and SIL01 (to show the Specific Site and Areas of Search allocated for future silica sand extraction)
- Air Quality Management Areas Inset 33a Swaffham (as a result of a new Air Quality Management Area being designated by Breckland Council)
- Airport Safeguarding legend (as a result of revised information provided by the Defence Infrastructure Organisation)
- Airport Safeguarding Insets 34 – 35 (as a result of revised information provided by the Defence Infrastructure Organisation)

The amendments to the Revised Policies Map should be read in conjunction with the Revised Policies Map adopted in October 2013.



© Crown copyright and database rights  
2011 Ordnance Survey 100019340, 31 August 2016  
Licence No. 2007/063 British Geological Survey © NERC. All rights reserved

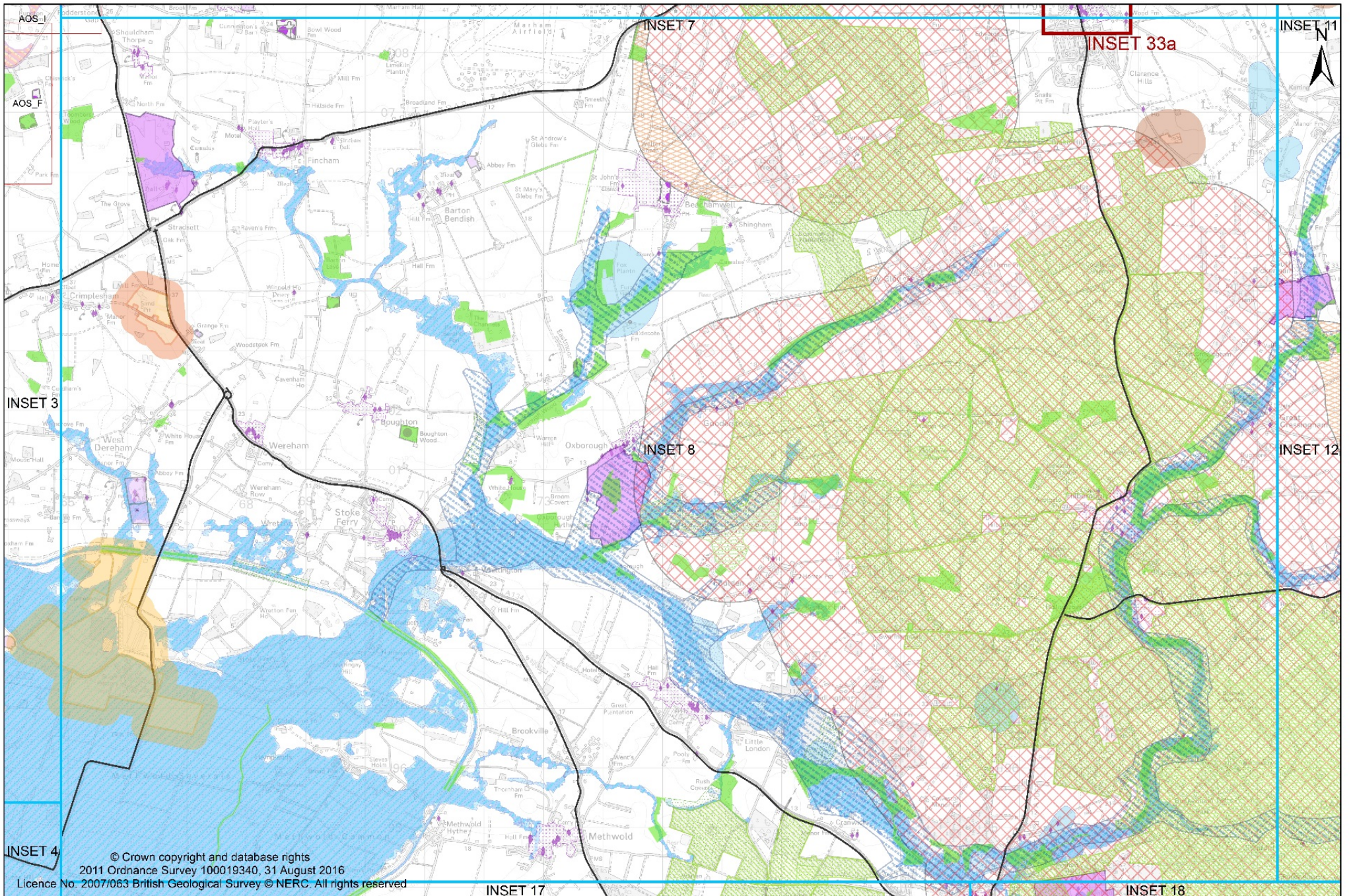




© Crown copyright and database rights  
 2011 Ordnance Survey 100019340, 31 August 2016  
 Licence No. 2007/063 British Geological Survey © NERC. All rights reserved

0 1 2 4 Kilometres

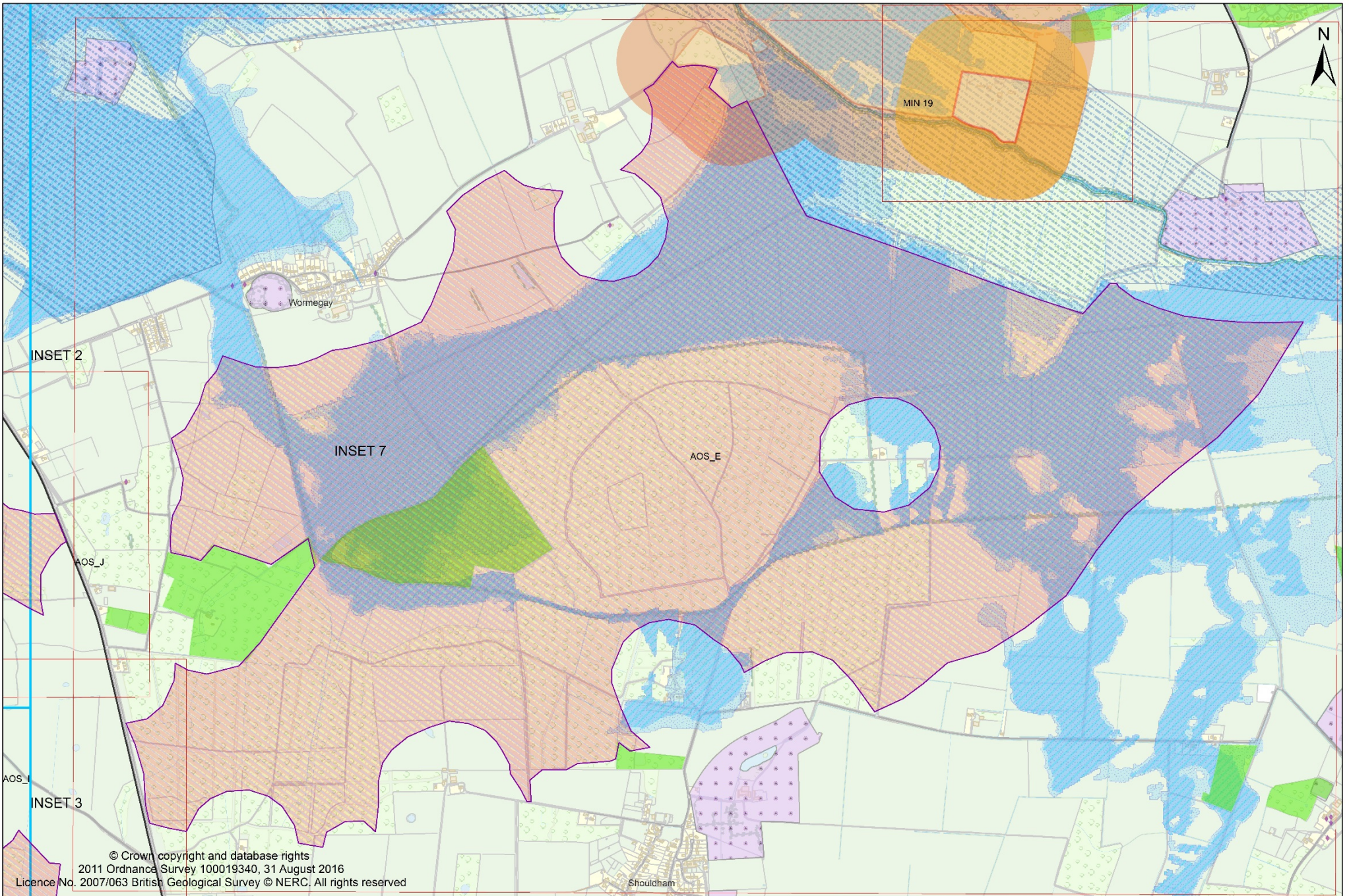




© Crown copyright and database rights  
 2011 Ordnance Survey 100019340, 31 August 2016  
 Licence No. 2007/063 British Geological Survey © NERC. All rights reserved

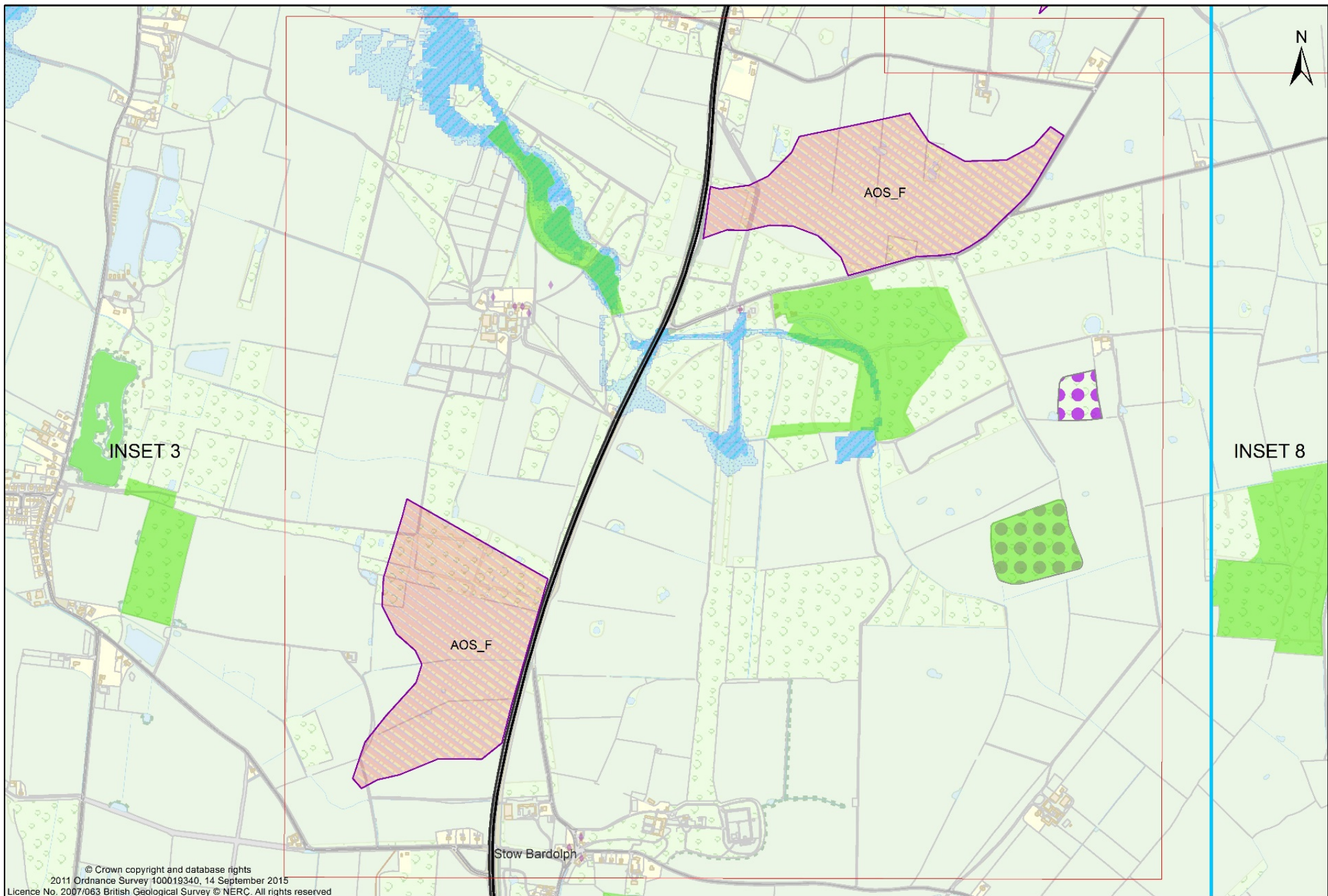
0 1,000 2,000 4,000 Metres





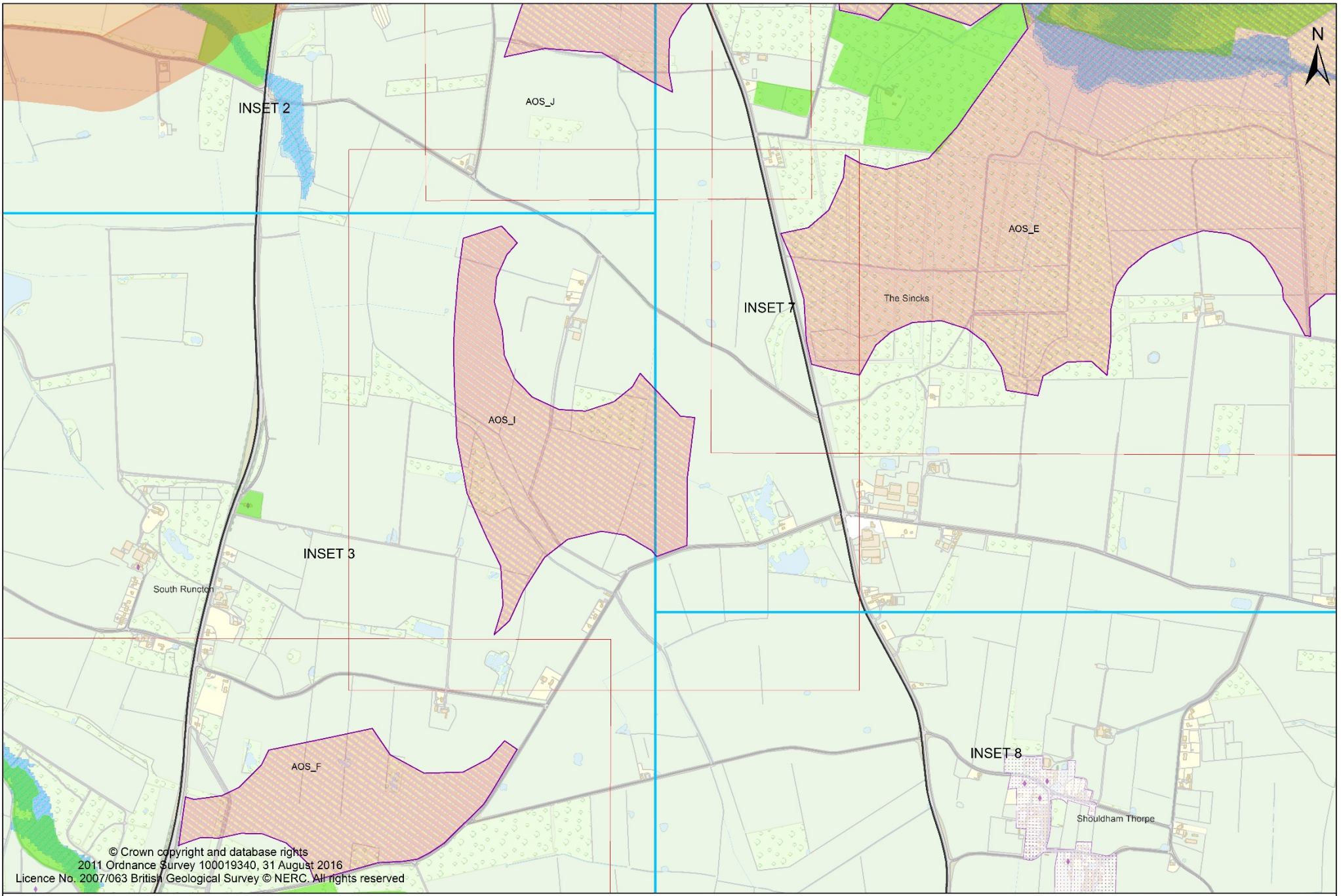
© Crown copyright and database rights  
2011 Ordnance Survey 100019340, 31 August 2016  
Licence No. 2007/063 British Geological Survey © NERC. All rights reserved





© Crown copyright and database rights  
2011 Ordnance Survey 100019340, 14 September 2015  
Licence No. 2007/063 British Geological Survey © NERC. All rights reserved

0 0.25 0.5 1 Kilometres

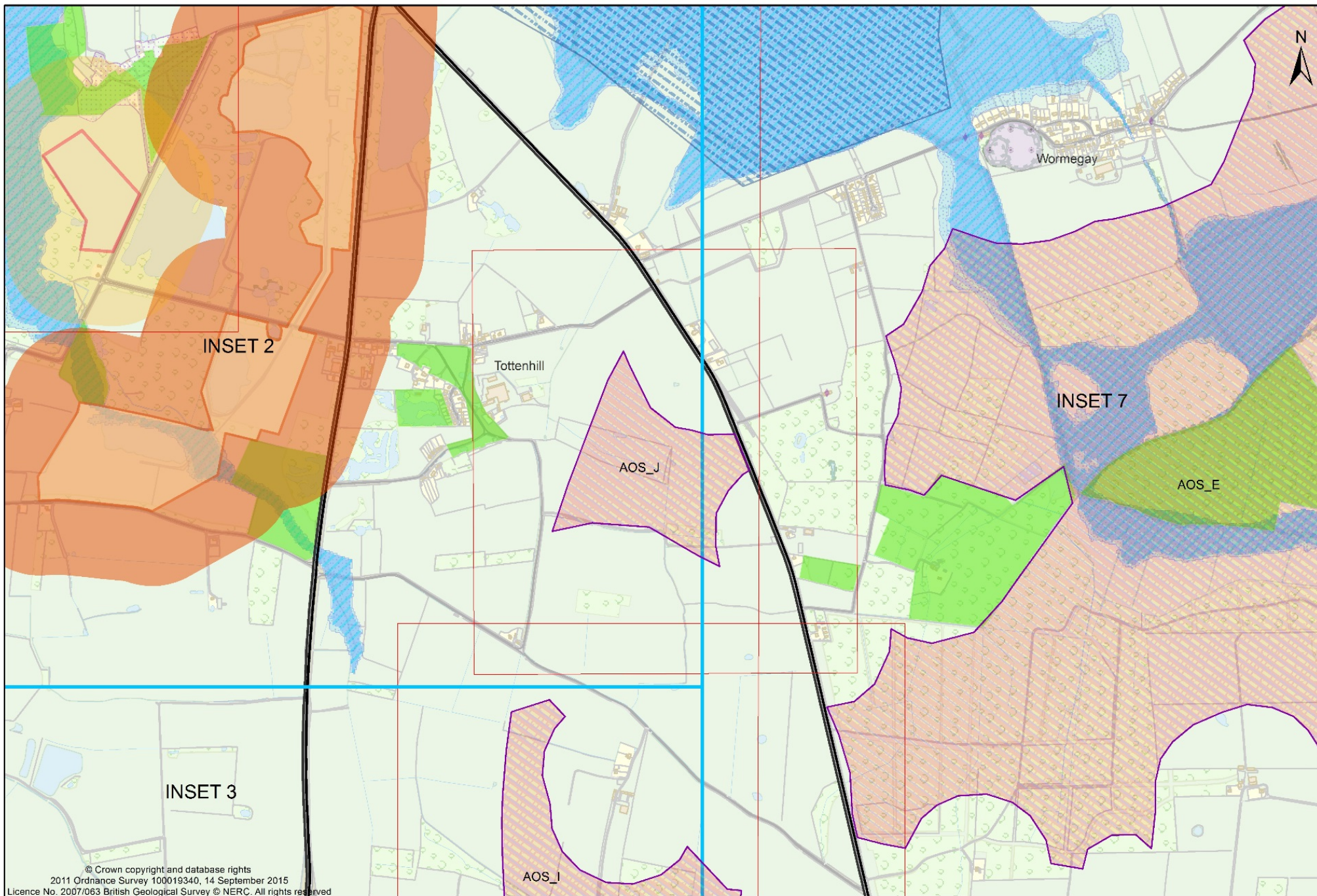


© Crown copyright and database rights  
2011 Ordnance Survey 100019340, 31 August 2016  
Licence No. 2007/063 British Geological Survey © NERC. All rights reserved

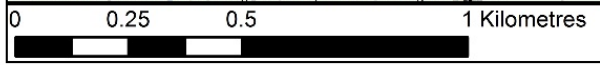
0 0.25 0.5 1 Kilometres

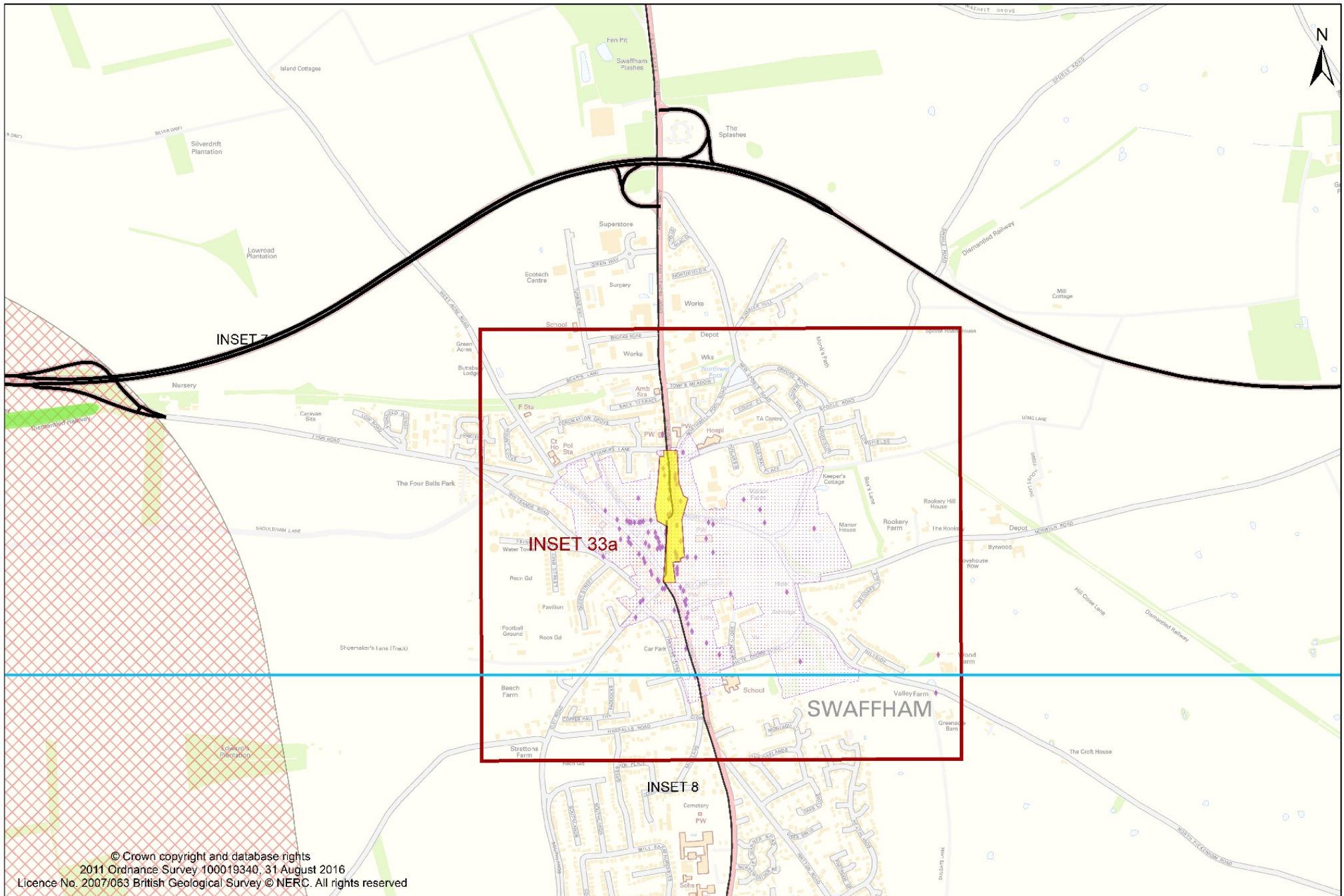




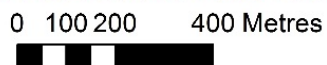


© Crown copyright and database rights  
2011 Ordnance Survey 100019340, 14 September 2015  
Licence No. 2007/063 British Geological Survey © NERC. All rights reserved







© Crown copyright and database rights  
 2011 Ordnance Survey 100019340, 31 August 2016  
 Licence No. 2007/063 British Geological Survey © NERC. All rights reserved





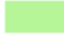








## Key - Airport Safeguarding

### Felthorpe Airfield Safeguarding

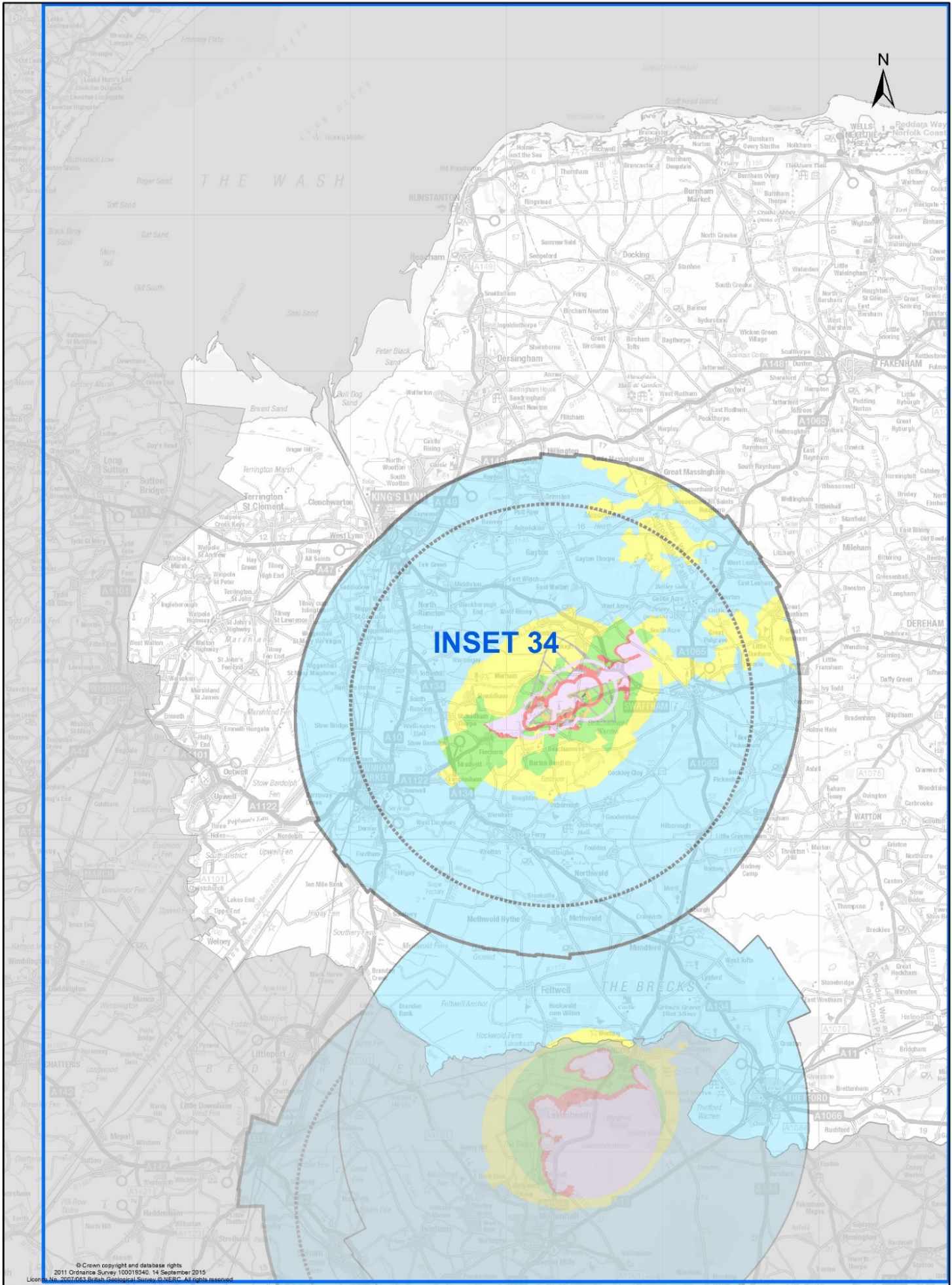
-  Consult on all Development
-  Consult on all development exceeding 30.5 metres

### MoD Safeguarding

-  Consultation required for any overhead power lines above 100kv
-  Consultation required for all applications involving a refuse tip, a reservoir, a sewage disposal works, a nature reserve or a bird sanctuary
-  Any building or structure with elevations clad or partly clad in metallic type materials, or roofing clad or partly clad in metallic type materials
-  Consultation required for any building, structure or works exceeding 10.7m in height above ground level
-  Consultation required for any building, structure or works exceeding 15.2m in height above ground level
-  Consultation required for any development or change of use of land
-  Consultation required to erect a building of curtain wall construction or clad or substantially clad in glass
-  Consultation required for any building structure or works exceeding 45.7m in height above ground level
-  Consultation required to carry out building, engineering, mining, or other operations or to make any material changes in the use of any building or other land
-  Consultation required for any building, structure or works exceeding 91.4m in height above ground level
-  Consultation required for developments that involve flying activities including gliding, micro-light aircraft and hang-gliding sites

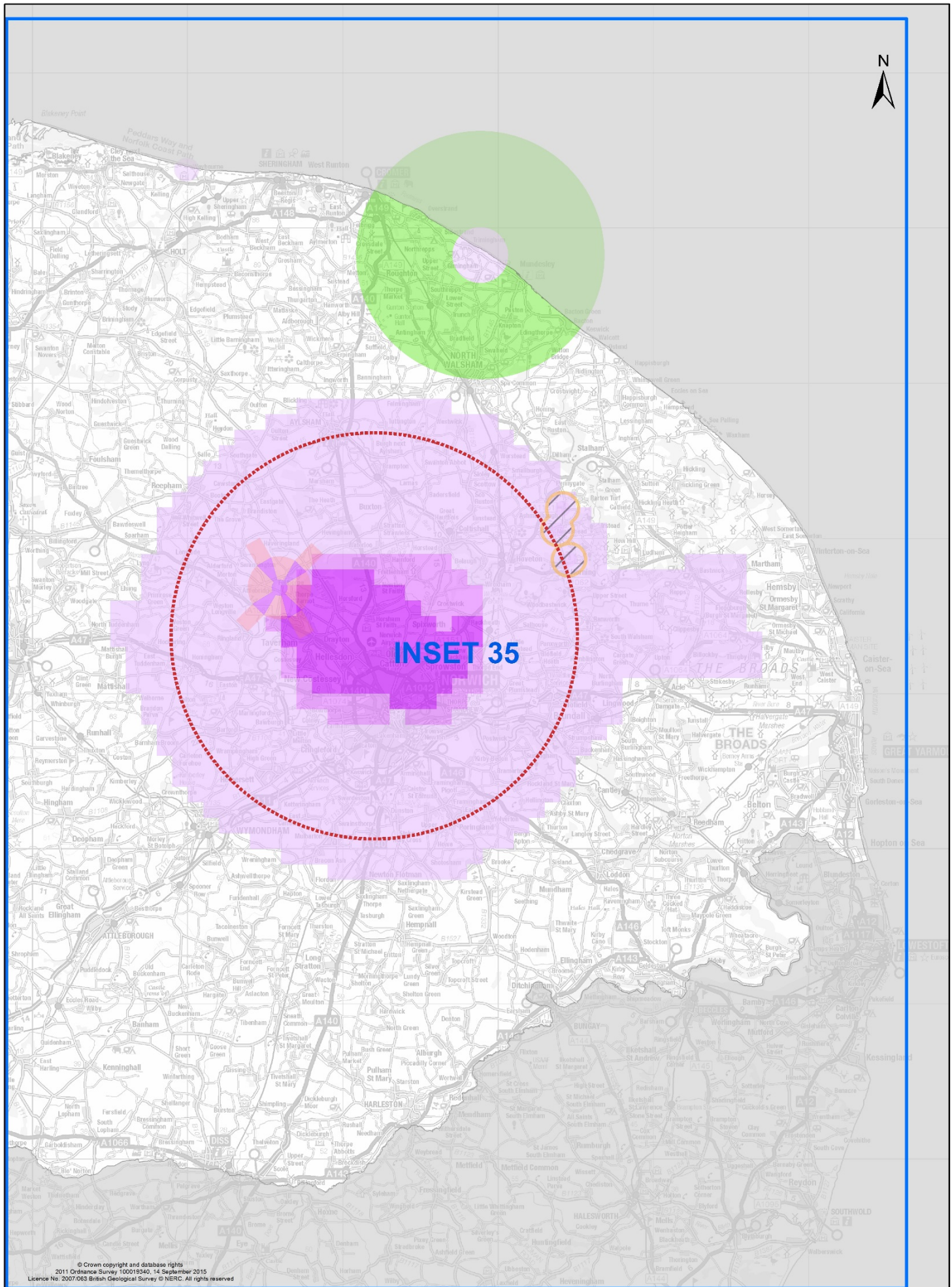
### Norwich Airport Safeguarding

-  All Developments
-  Consult on Developments Exceeding 10 metres
-  Consult on Developments Exceeding 15 metres
-  Consult on Developments Exceeding 45 metres
-  Consult on Developments Exceeding 90 metres
-  Bird Strike Consultation Zone



**INSET 34**

© Crown copyright and database rights  
 2011 Ordnance Survey 100019340. 14 September 2015  
 Licence No. 2007/063 British Geological Survey © NERC. All rights reserved



**INSET 35**

© Crown copyright and database rights  
2011 Ordnance Survey 100019340, 14 September 2015  
Licence No. 2007/0663 British Geological Survey © NERC. All rights reserved