

---

# The Norfolk County Council (Norwich Northern Distributor Road (A1067 to A47(T))) Order

---

---

## 2.3 Works Plans

---

Planning Act 2008

Infrastructure Planning

The Infrastructure Planning (Applications: Prescribed Forms and Procedure) Regulations 2009

*PINS Reference Number:* TR010015

*Document Reference:* 2.3

*Regulation Number:* 5(2)(j)

*Author:* Norfolk County Council

Revision	Date	Description
0	8 <sup>th</sup> January 2014	Revision For Submission



## INTRODUCTION

This document is submitted in relation to the application for a Development Consent Order by Norfolk County Council to the Secretary of State, under the Planning Act 2008.

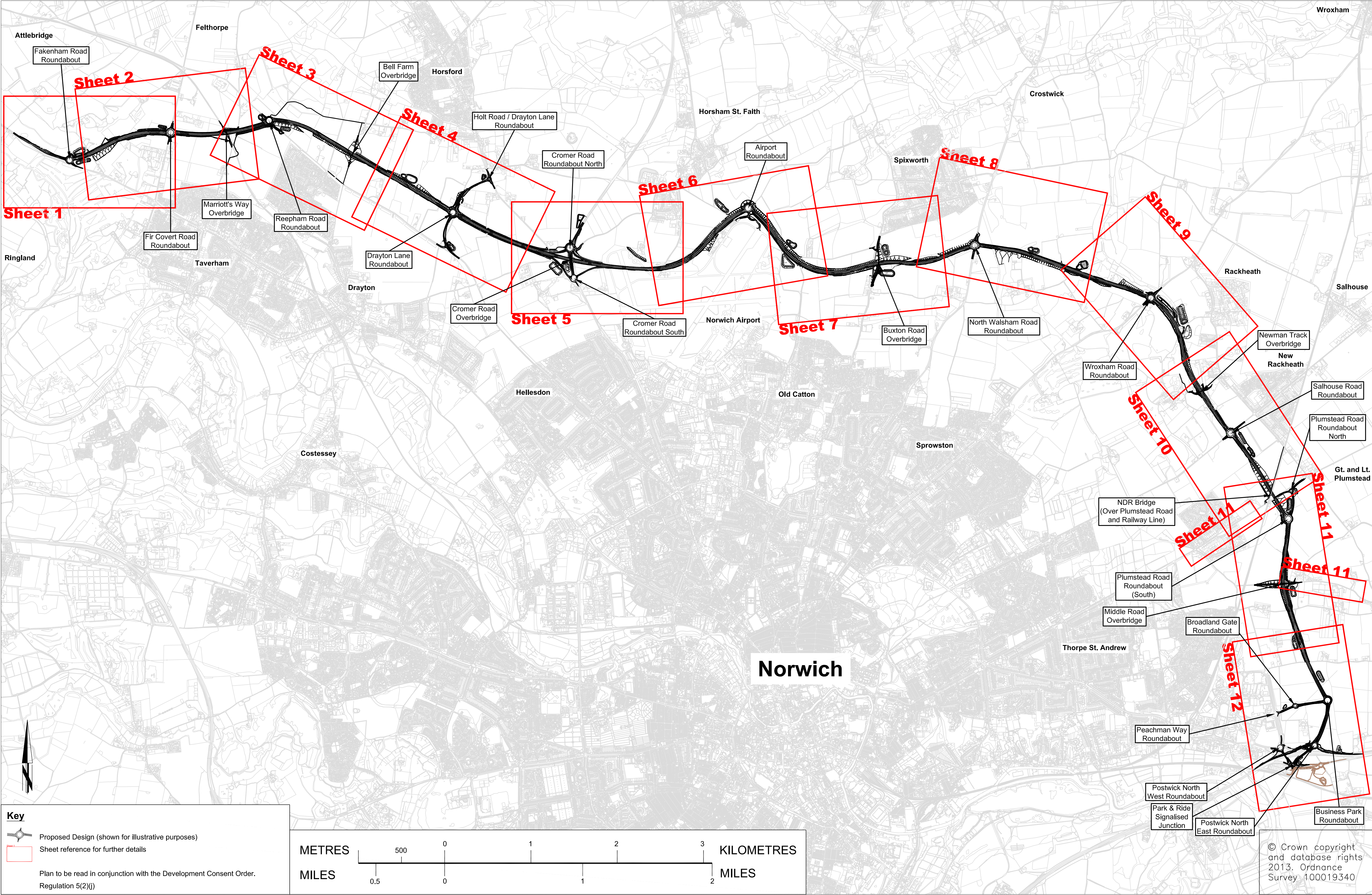
The application is for the Norfolk County Council (Norwich Northern Distributor Road (A1067 to A47(T))) Order, to grant development consent for the construction of a new highway running west to east, to south, between the A1067 Fakenham Road and the A47 Trunk Road at Postwick, including improvements to the existing highway network to the north and north east of Norwich.

This document comprises part of the application documents and relates to Regulation 5(2)(j) of the Infrastructure Planning (Applications: Prescribed Forms and Procedure) Regulations 2009.


## SCHEDULE OF PLANS INCLUDED IN THIS DOCUMENT


Drawing No.	Drawing Title	Revision
R1C093-R1-5001	Works plan key plan	0
R1C093-R1-5002	Works Plan – Sheet 1	0
R1C093-R1-5003	Works Plan – Sheet 2	0
R1C093-R1-5004	Works Plan – Sheet 3	0
R1C093-R1-5005	Works Plan – Sheet 4	0
R1C093-R1-5006	Works Plan – Sheet 5	0
R1C093-R1-5007	Works Plan – Sheet 6	0
R1C093-R1-5008	Works Plan – Sheet 7	0
R1C093-R1-5009	Works Plan – Sheet 8	0
R1C093-R1-5010	Works Plan – Sheet 9	0
R1C093-R1-5011	Works Plan – Sheet 10	0
R1C093-R1-5012	Works Plan – Sheet 11	0
R1C093-R1-5013	Works Plan – Sheet 12	0



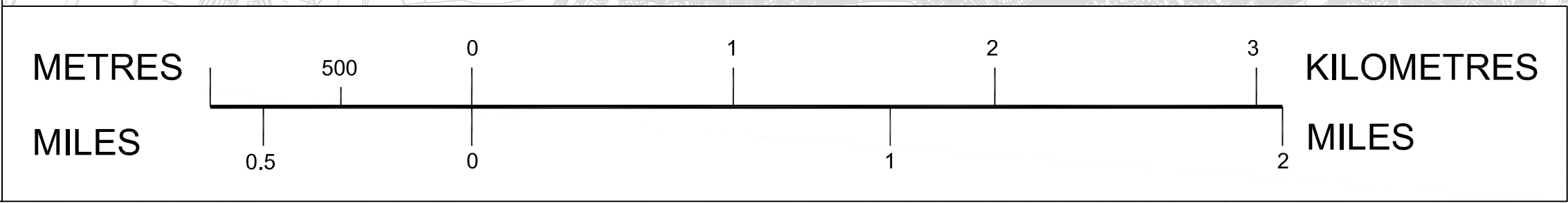




**Key**

 Proposed Design (shown for illustrative purposes)

 Sheet reference for further details

Plan to be read in conjunction with the Development Consent Order, Regulation 5(2)(j)





**Tom McCabe**  
Interim Director of Environment  
Transport and Development  
Norfolk County Council  
County Hall, Martineau Lane  
Norwich NR1 2SG

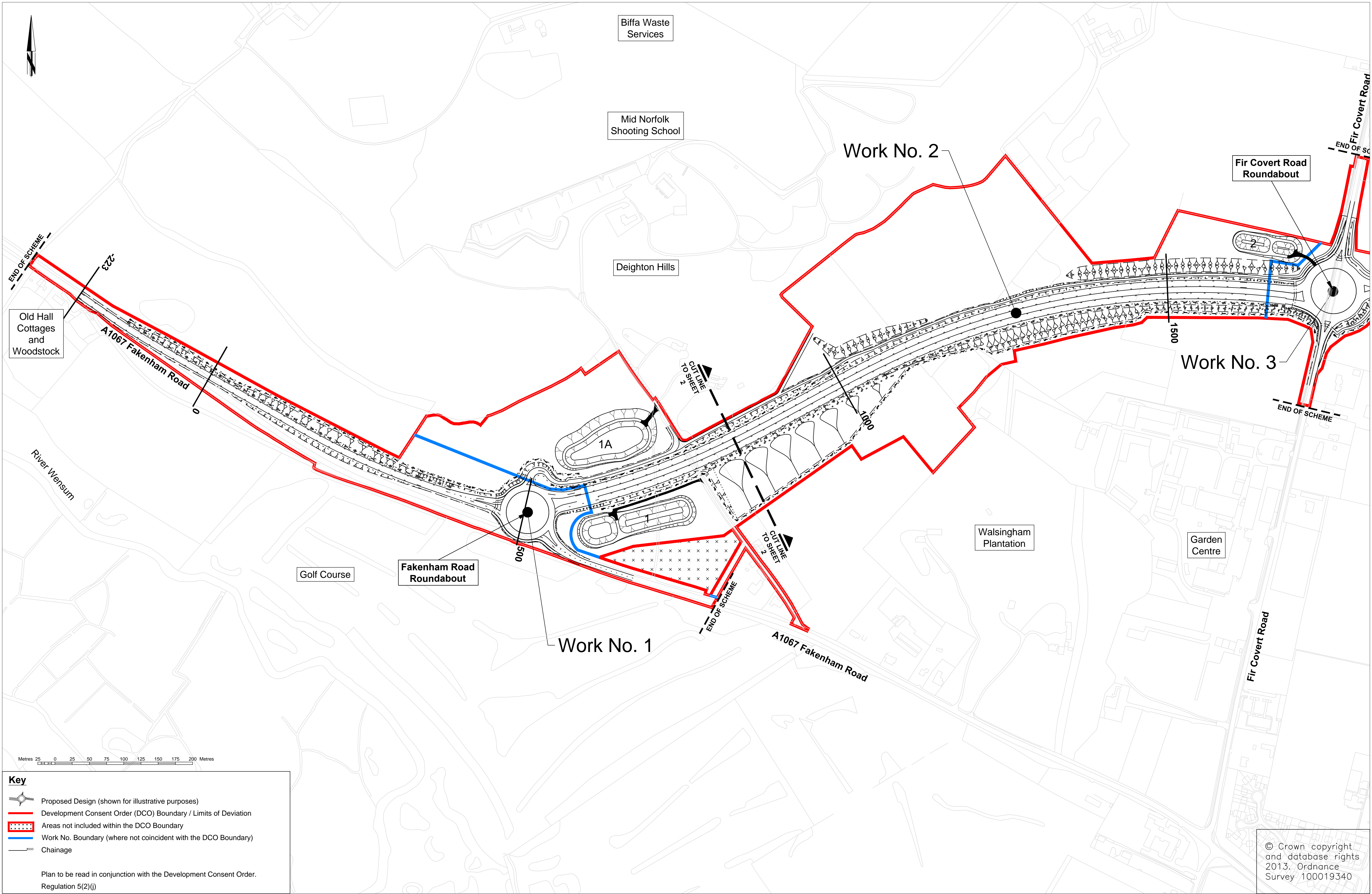
**DRAWING TITLE**

Norwich Northern Distributor Road  
Works Plans  
Key Plan for drawings 5002 to 5013

REV.	DESCRIPTION	CHECKED	DATE
0	Revision for Submission	JB	11/13

SURVEYED BY	INITIALS	DATE	DRAWING No.
OS	OS	2013	R1C093-R1-5001
DESIGNED BY	JGt	11/13	PROJECT TITLE
DRAWN BY	JGt	11/13	Norwich Northern Distributor Road
CHECKED BY	JB	11/13	SCALE 1:20,000 @ A1
			FILE No. R1C093





**Key**

Proposed Design (shown for illustrative purposes)

Development Consent Order (DCO) Boundary / Limits of Deviation

Areas not included within the DCO Boundary

Work No. Boundary (where not coincident with the DCO Boundary)

Chainage

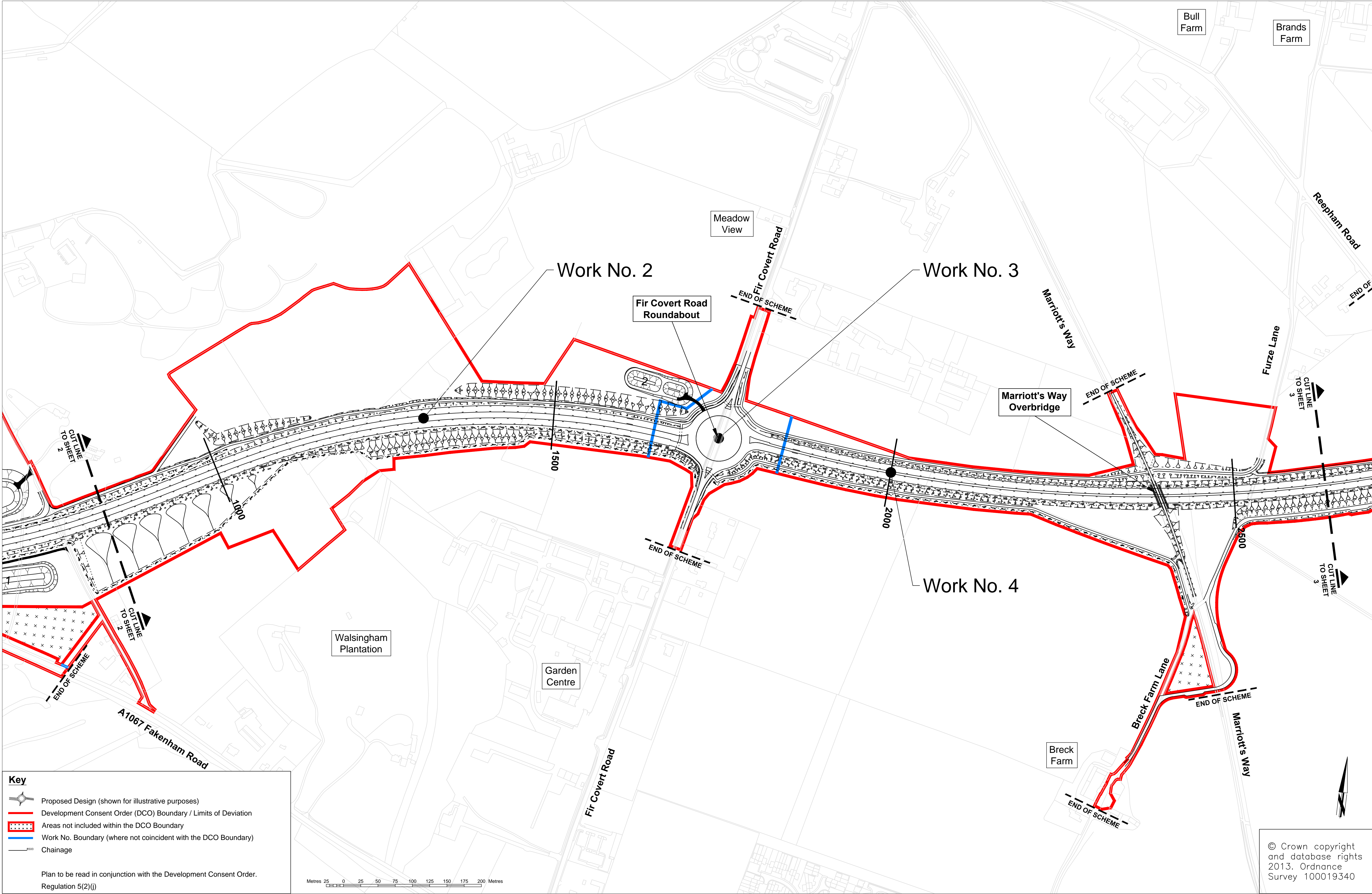
Plan to be read in conjunction with the Development Consent Order.  
Regulation 5(2)(j)

© Crown copyright  
and database rights  
2013. Ordnance  
Survey 100019340

REV.	DESCRIPTION	CHECKED	DATE
0	Revision for Submission	JB	11/13

SURVEYED BY	INITIALS	DATE	DRAWING No.
			R1C093-R1-5002
DESIGNED BY			PROJECT TITLE
			Norwich Northern Distributor Road
DRAWN BY			SCALE
			1:2500 @ A1
CHECKED BY			FILE No.
			R1C093

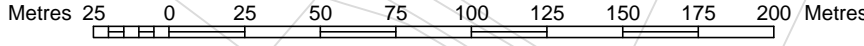




**Key**

- Proposed Design (shown for illustrative purposes)
- Development Consent Order (DCO) Boundary / Limits of Deviation
- Areas not included within the DCO Boundary
- Work No. Boundary (where not coincident with the DCO Boundary)
- Chainage

Plan to be read in conjunction with the Development Consent Order.  
Regulation 5(2)(j)

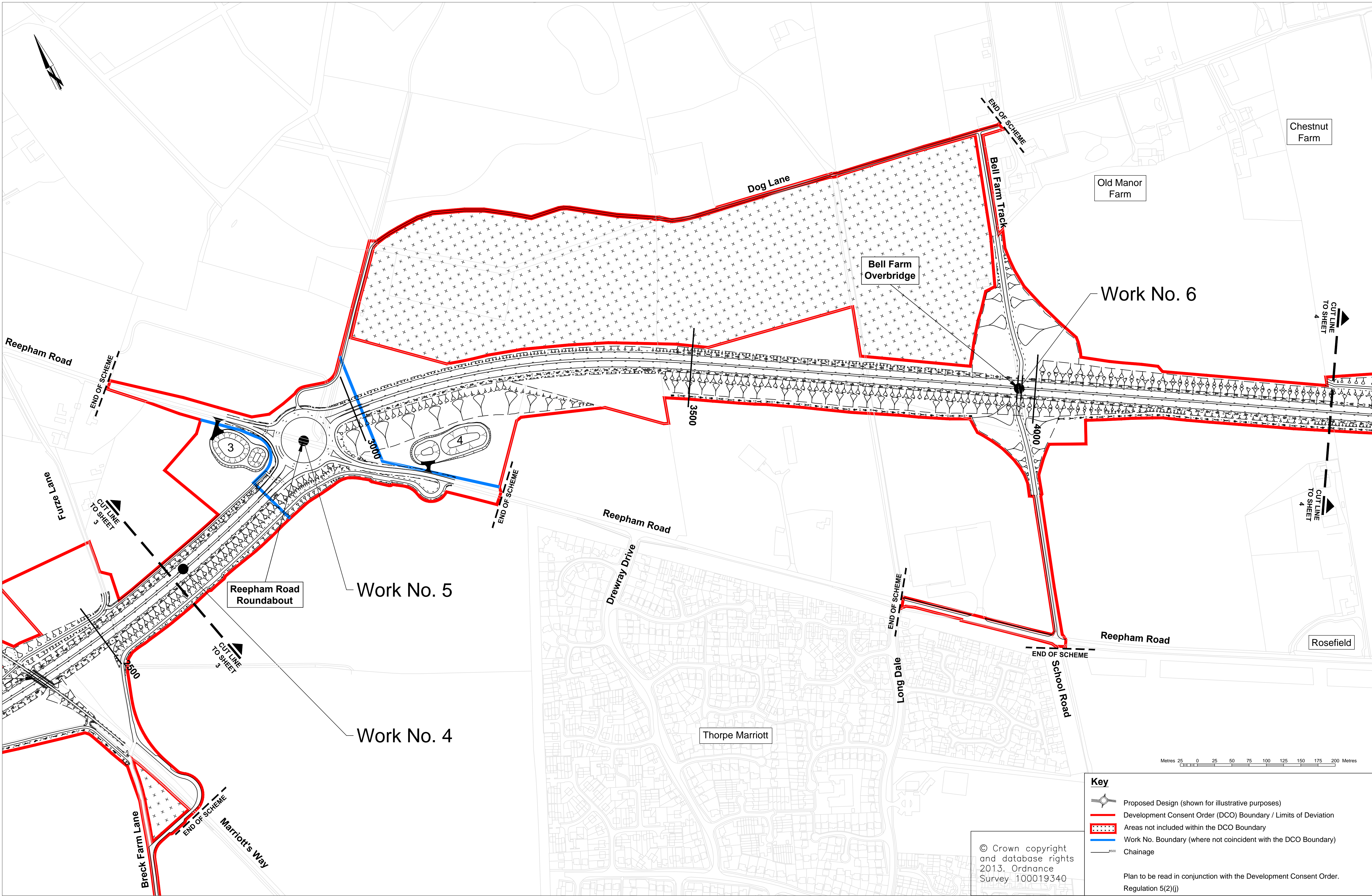


© Crown copyright  
and database rights  
2013. Ordnance  
Survey 100019340

REV.	DESCRIPTION	CHECKED	DATE
0	Revision for Submission	JB	11/13

SURVEYED BY	INITIALS	DATE	DRAWING No.
OS	OS	2013	R1C093-R1-5003
DESIGNED BY	JGt	11/13	PROJECT TITLE
DRAWN BY	JGt	11/13	Norwich Northern Distributor Road
CHECKED BY	JB	11/13	FILE No.
			R1C093

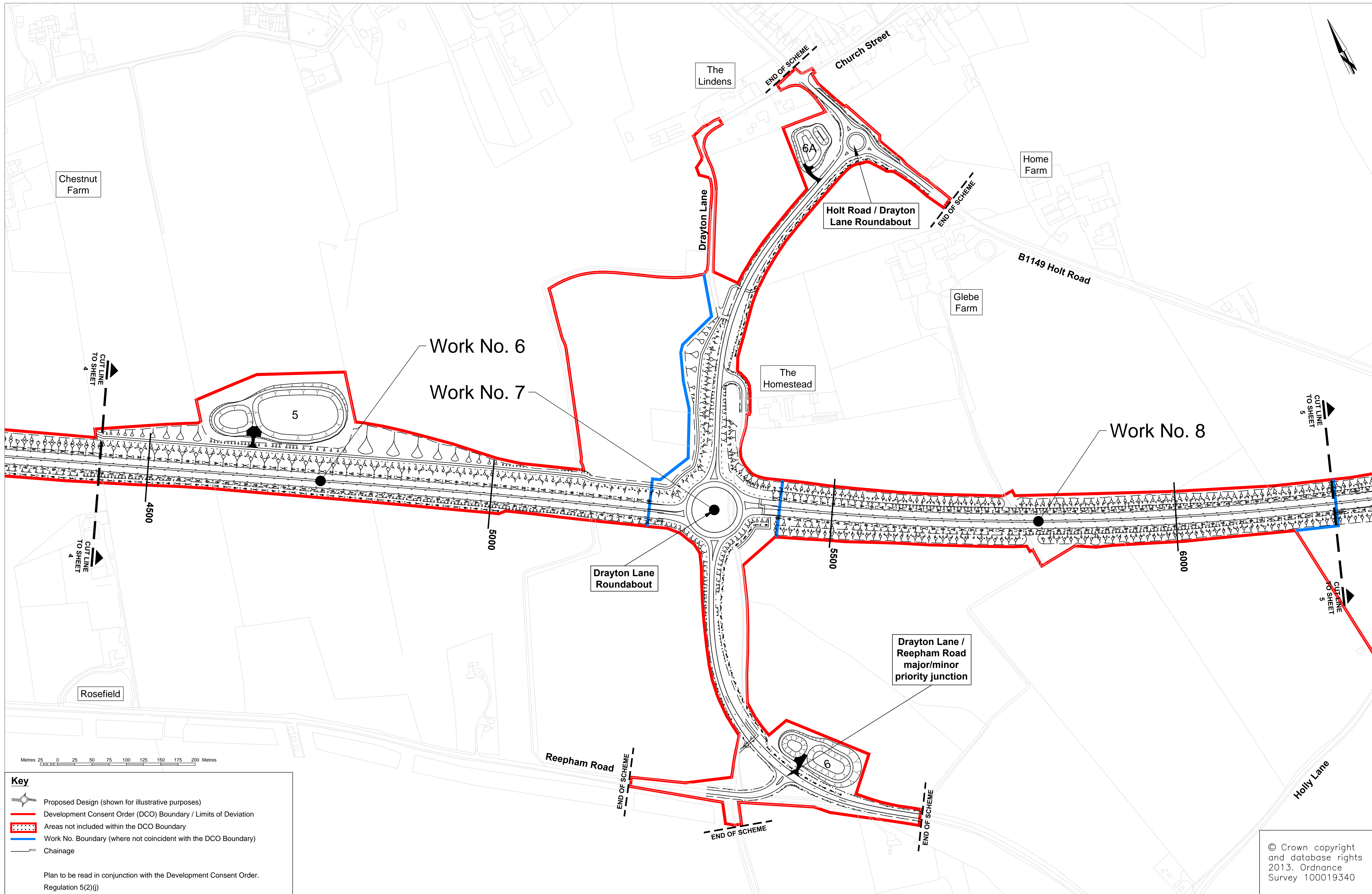




REV.	DESCRIPTION	CHECKED	DATE
0	Revision for Submission	JB	11/13


SURVEYED BY	INITIALS	DATE	DRAWING No.
DESIGNED BY	JGt	11/13	R1C093-R1-5004
DRAWN BY	JGt	11/13	PROJECT TITLE
CHECKED BY	JB	11/13	Norwich Northern Distributor Road
			SCALE 1:2500 @ A1
			FILE No. R1C093







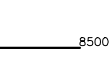
Metres 25 0 25 50 75 100 125 150 175 200 Metres


Key

 Proposed Design (shown for illustrative purposes)

 Development Consent Order (DCO) Boundary / Limits of Deviation

 Areas not included within the DCO Boundary


 Work No. Boundary (where not coincident with the DCO Boundary)

 Chainage


Plan to be read in conjunction with the Development Consent Order.

Regulation 5(2)(j)


© Crown copyright  
and database rights  
2013. Ordnance  
Survey 100019340



Norfolk County Council



Birse Civils



Mott MacDonald

Tom McCabe  
Interim Director of Environment  
Transport and Development  
Norfolk County Council  
County Hall, Martineau Lane  
Norwich NR1 2SG

DRAWING TITLE  
Norwich Northern Distributor Road  
Works Plan  
Sheet 4 of 12

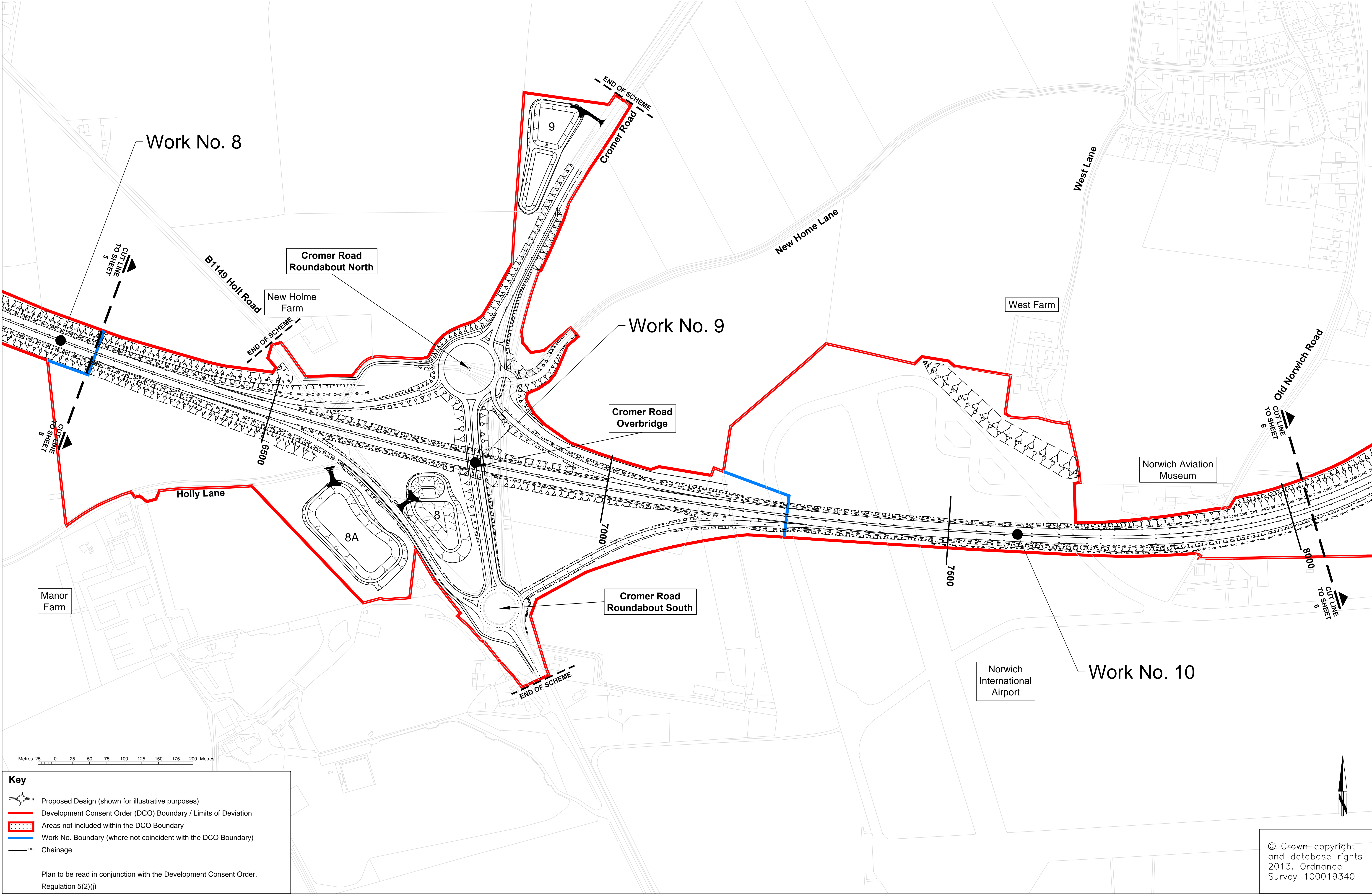
REV.	DESCRIPTION	CHECKED	DATE
0	Revision for Submission	JB	11/13

	INITIALS	DATE	DRAWING No. R1C093-R1-5005
SURVEYED BY	OS	2013	PROJECT TITLE Norwich Northern Distributor Road
DESIGNED BY	JGt	11/13	
DRAWN BY	JGt	11/13	SCALE 1:2500 @ A1
CHECKED BY	JB	11/13	FILE No. R1C093

ORIGINAL SIZE: A1

RL 000672





Metres 25 0 25 50 75 100 125 150 175 200 Metres

Key

Proposed Design (shown for illustrative purposes)

Development Consent Order (DCO) Boundary / Limits of Deviation

Areas not included within the DCO Boundary

Work No. Boundary (where not coincident with the DCO Boundary)

Chainage

Plan to be read in conjunction with the Development Consent Order.  
Regulation 5(2)(j)

© Crown copyright  
and database rights  
2013. Ordnance  
Survey 100019340

Norfolk County Council

Mott MacDonald

Birse Civils

Tom McCabe  
Interim Director of Environment  
Transport and Development  
Norfolk County Council  
County Hall, Martineau Lane  
Norwich NR1 2SG

DRAWING TITLE

Norwich Northern Distributor Road  
Works Plan  
Sheet 5 of 12

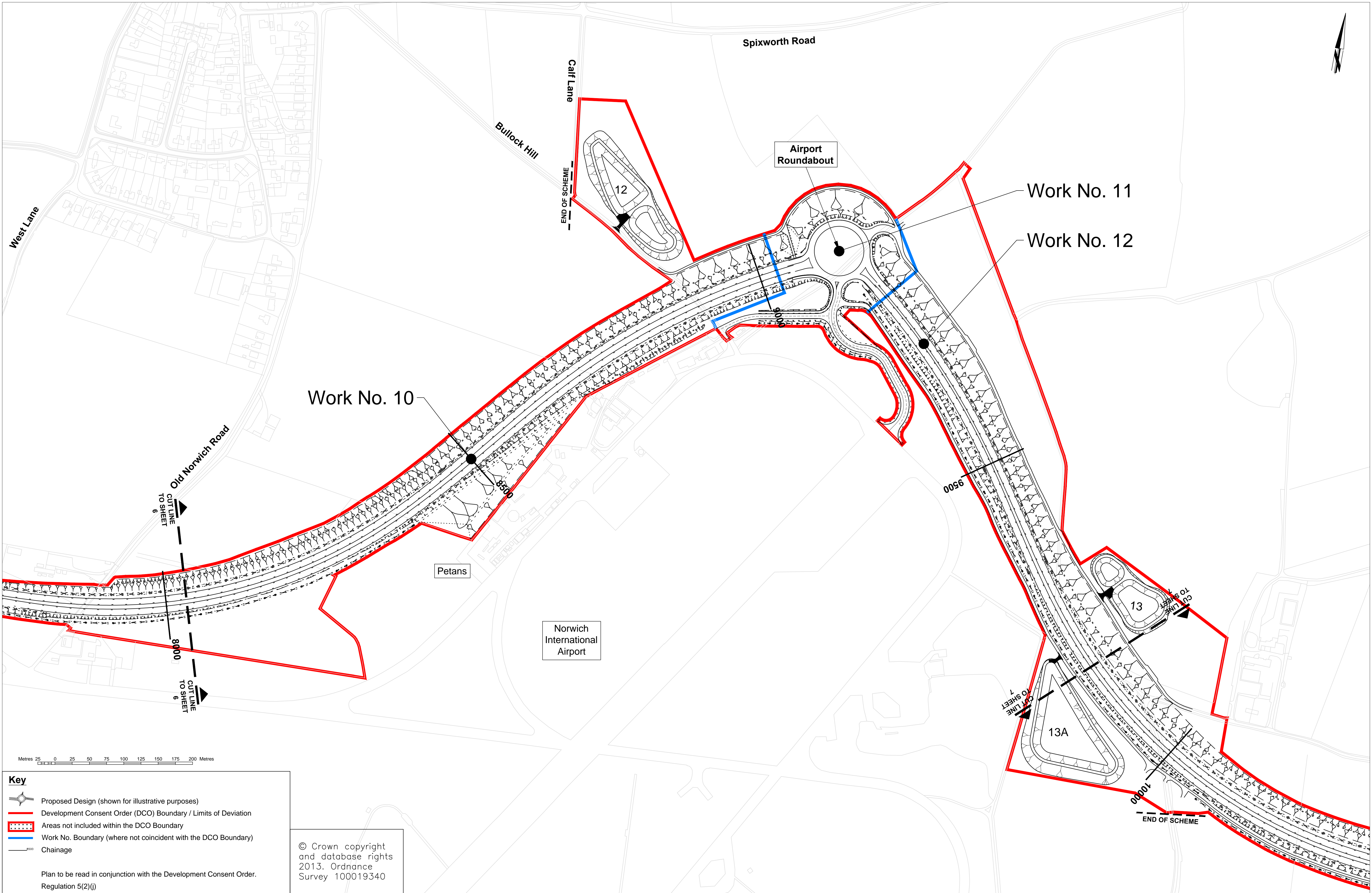
REV.	DESCRIPTION	CHECKED	DATE
0	Revision for Submission	JB	11/13

SURVEYED BY	INITIALS	DATE	DRAWING No.
DESIGNED BY	JGt	11/13	R1C093-R1-5006
DRAWN BY	JGt	11/13	PROJECT TITLE
CHECKED BY	JB	11/13	Norwich Northern Distributor Road
SCALE 1:2500 @ A1			FILE No. R1C093

ORIGINAL SIZE: A1

REL 0000072





Metres 25 0 25 50 75 100 125 150 175 200 Metres

**Key**

- Proposed Design (shown for illustrative purposes)
- Development Consent Order (DCO) Boundary / Limits of Deviation
- Areas not included within the DCO Boundary
- Work No. Boundary (where not coincident with the DCO Boundary)
- Chainage

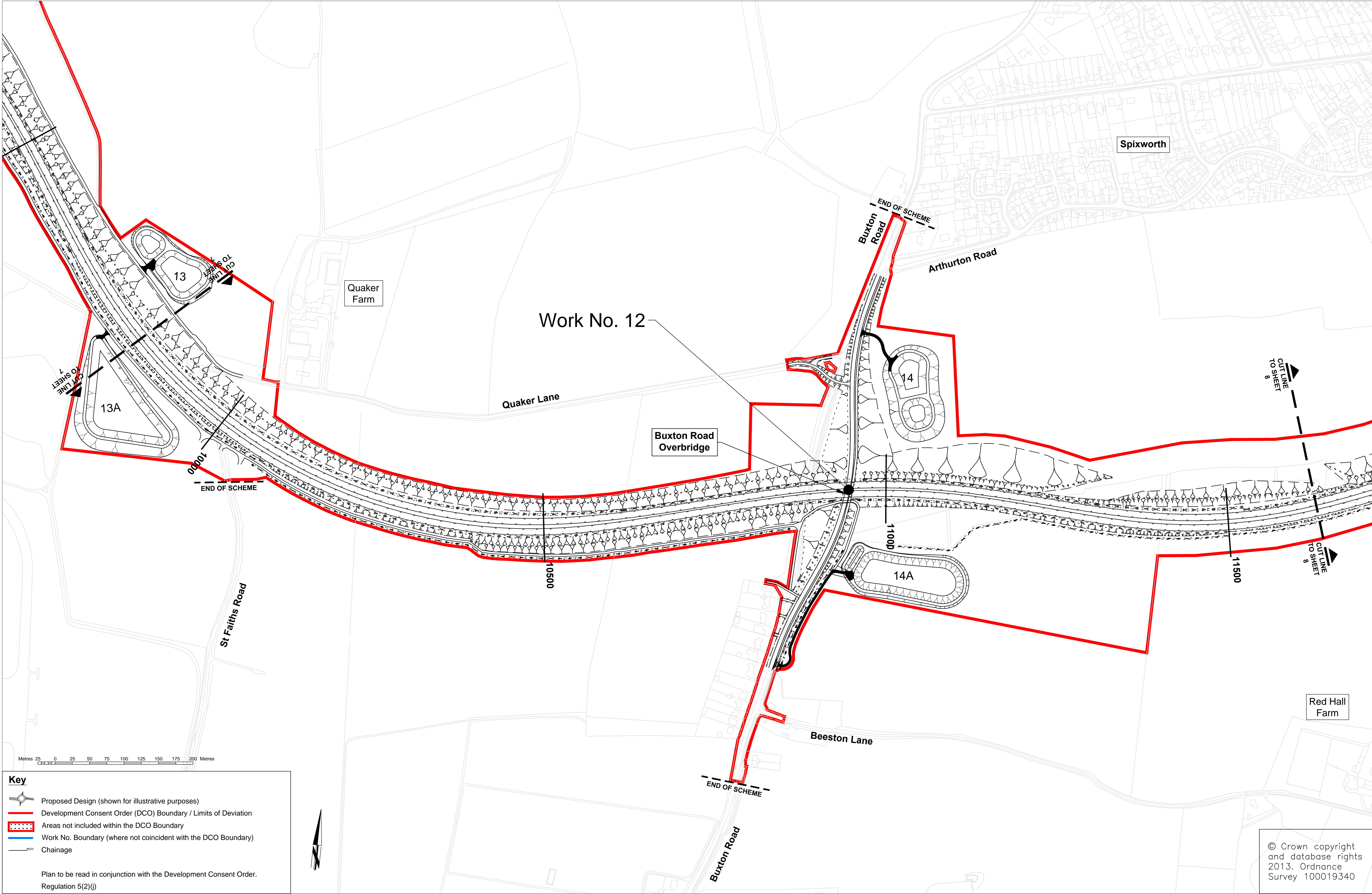
Plan to be read in conjunction with the Development Consent Order.  
Regulation 5(2)(j)

© Crown copyright  
and database rights  
2013. Ordnance  
Survey 100019340

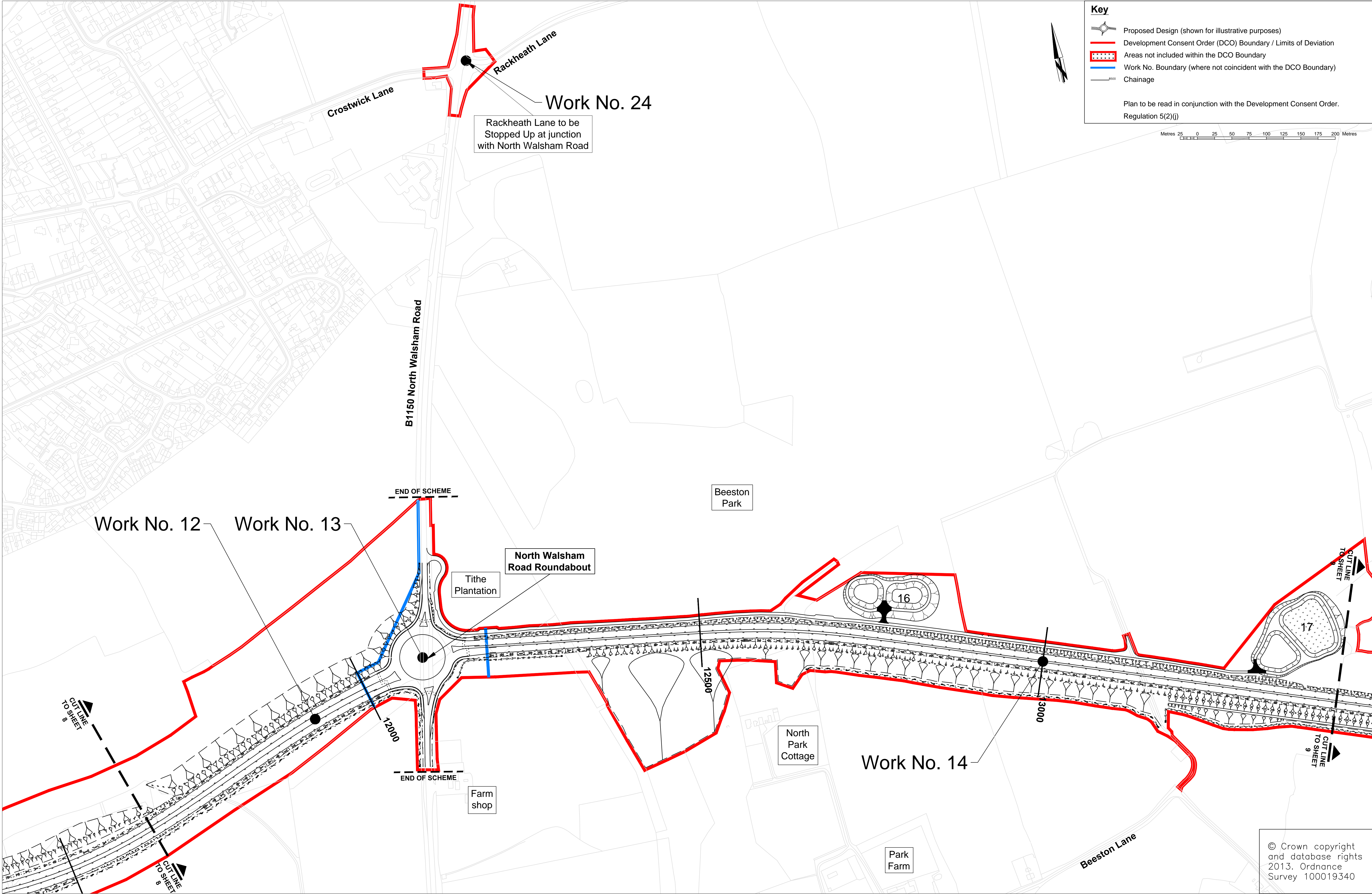
REV.	DESCRIPTION	CHECKED	DATE
0	Revision for Submission	JB	11/13

	INITIALS	DATE	DRAWING No. R1C093-R1-5007	
SURVEYED BY	OS	2013	PROJECT TITLE Norwich Northern Distributor Road	
DESIGNED BY	JGt	11/13		
DRAWN BY	JGt	11/13		
CHECKED BY	JB	11/13	SCALE 1:2500 @ A1	FILE No. R1C093









REV.	DESCRIPTION	CHECKED	DATE
0	Revision for Submission	JB	11/13

	INITIALS	DATE	DRAWING No. R1C093-R1-5009	
SURVEYED BY	OS	2013	PROJECT TITLE	
DESIGNED BY	JGt	11/13	Norwich Northern Distributor Road	
DRAWN BY	JGt	11/13	SCALE 1:2500 @ A1	FILE No. R1C093
CHECKED BY	JB	11/13		

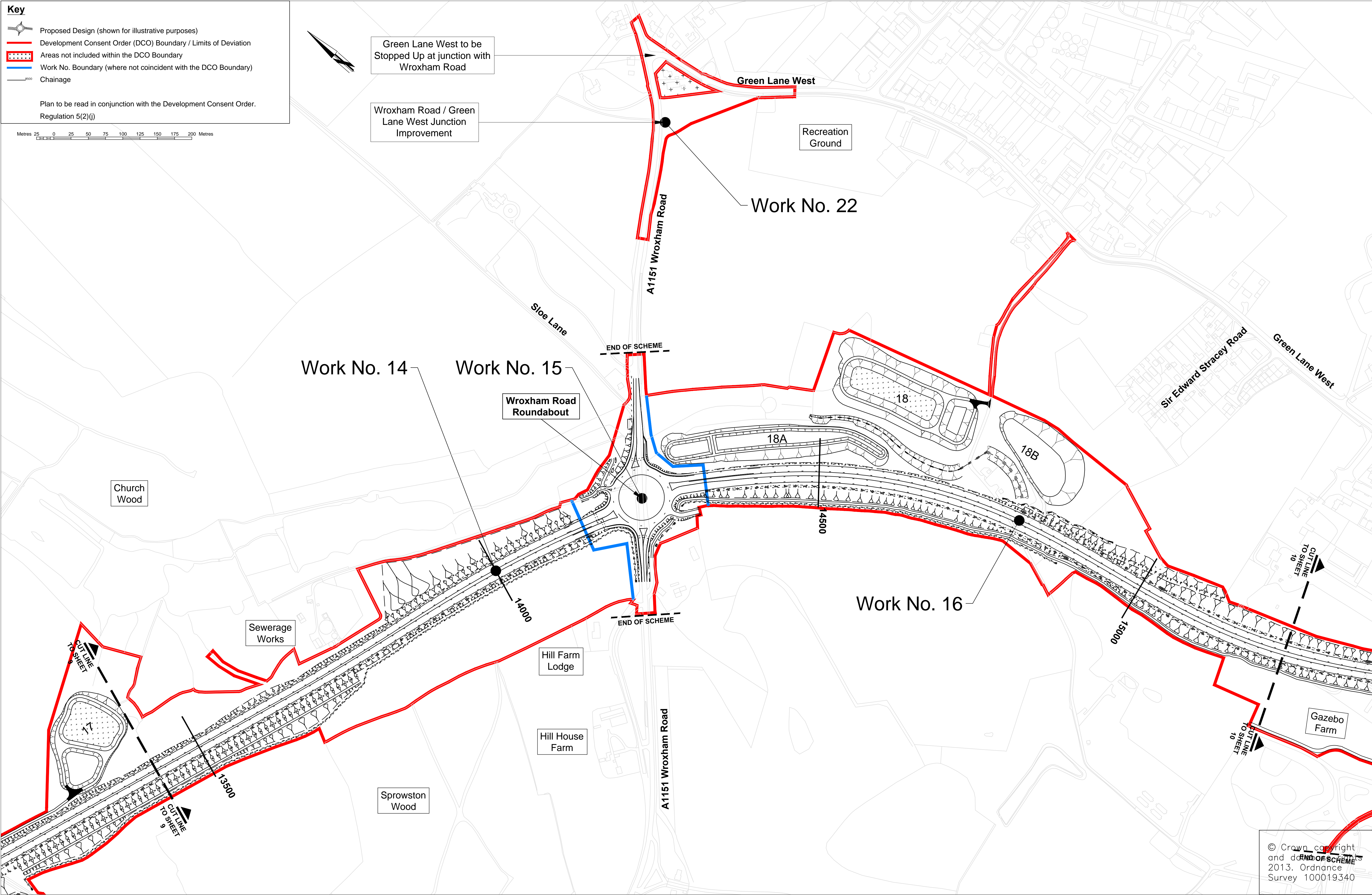


**Key**

- Proposed Design (shown for illustrative purposes)
- Development Consent Order (DCO) Boundary / Limits of Deviation
- Areas not included within the DCO Boundary
- Work No. Boundary (where not coincident with the DCO Boundary)
- Chainage

Plan to be read in conjunction with the Development Consent Order.  
Regulation 5(2)(j)

Metres 25 0 25 50 75 100 125 150 175 200 Metres



© Crown copyright  
and data  
2013. Ordnance  
Survey 100019340



Tom McCabe  
Interim Director of Environment  
Transport and Development  
Norfolk County Council  
County Hall, Martineau Lane  
Norwich NR1 2SG

**DRAWING TITLE**  
Norwich Northern Distributor Road  
Works Plan  
Sheet 9 of 12

REV.	DESCRIPTION	CHECKED	DATE
0	Revision for Submission	JB	11/13

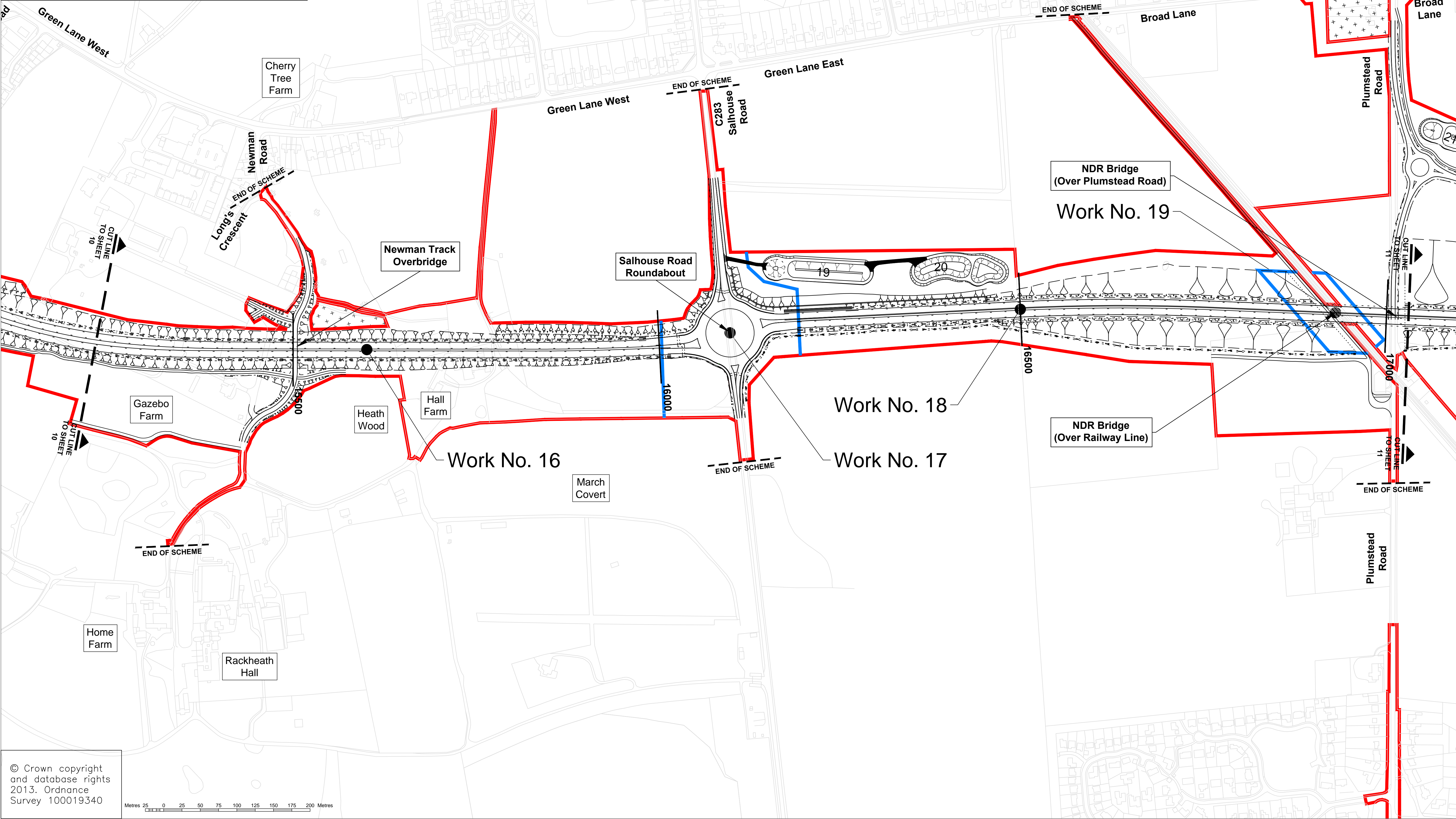
SURVEYED BY	INITIALS	DATE	DRAWING No.
	OS	2013	R1C093-R1-5010
DESIGNED BY	JGt	11/13	PROJECT TITLE
DRAWN BY	JGt	11/13	Norwich Northern Distributor Road
CHECKED BY	JB	11/13	SCALE 1:2500 @ A1
			FILE No. R1C093



**Key**

- Proposed Design (shown for illustrative purposes)
- Development Consent Order (DCO) Boundary / Limits of Deviation
- Areas not included within the DCO Boundary
- Work No. Boundary (where not coincident with the DCO Boundary)
- Chainage

Plan to be read in conjunction with the Development Consent Order.  
Regulation 5(2)(j)



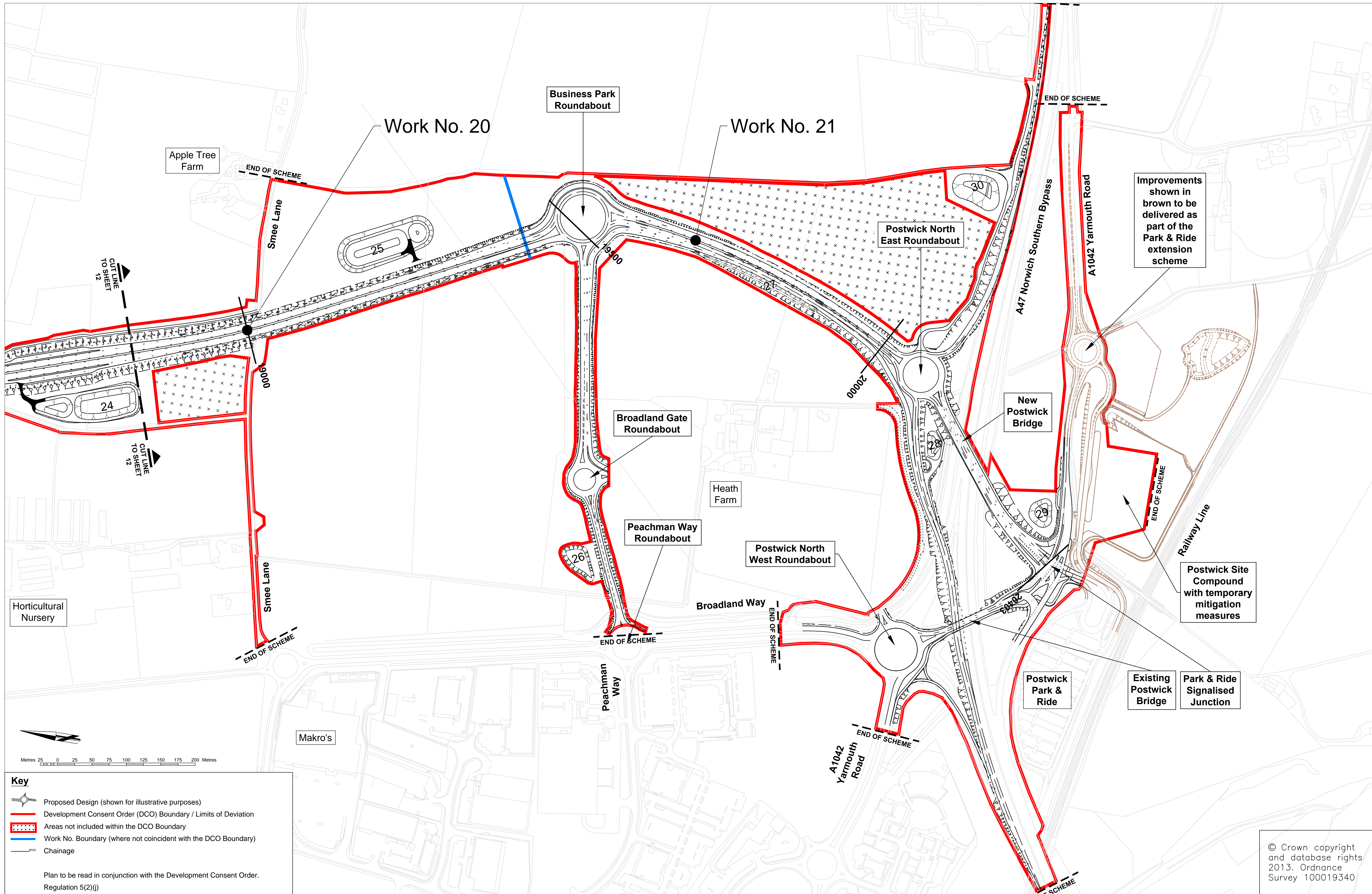
© Crown copyright  
and database rights  
2013. Ordnance  
Survey 100019340

Metres 25 0 25 50 75 100 125 150 175 200 Metres









**Key**

- Proposed Design (shown for illustrative purposes)
- Development Consent Order (DCO) Boundary / Limits of Deviation
- Areas not included within the DCO Boundary
- Work No. Boundary (where not coincident with the DCO Boundary)
- Chainage

Plan to be read in conjunction with the Development Consent Order.  
Regulation 5(2)(j)

© Crown copyright  
and database rights  
2013. Ordnance  
Survey 100019340