

## Walk 7

# Weavers' Way East Ruston



www.norfolktrails.co.uk

|                        |   |
|------------------------|---|
| Distance               | 3.5 miles (5.6 kilometres)                                |
| Surface                | 100% unsurfaced - stiles, rambler gates, pedestrian gates |
| Toilets                | No  |
| Refreshment facilities | No  |
| Seating on route       | Yes, on Weavers' Way                                      |

### Start point:

Weavers' Way car park, East Ruston. OS Grid Reference TG 346 272.

**N.B.** This walk can be muddy and wet at any time of the year. In the spring and summer biting insects are common so insect repellent is recommended.

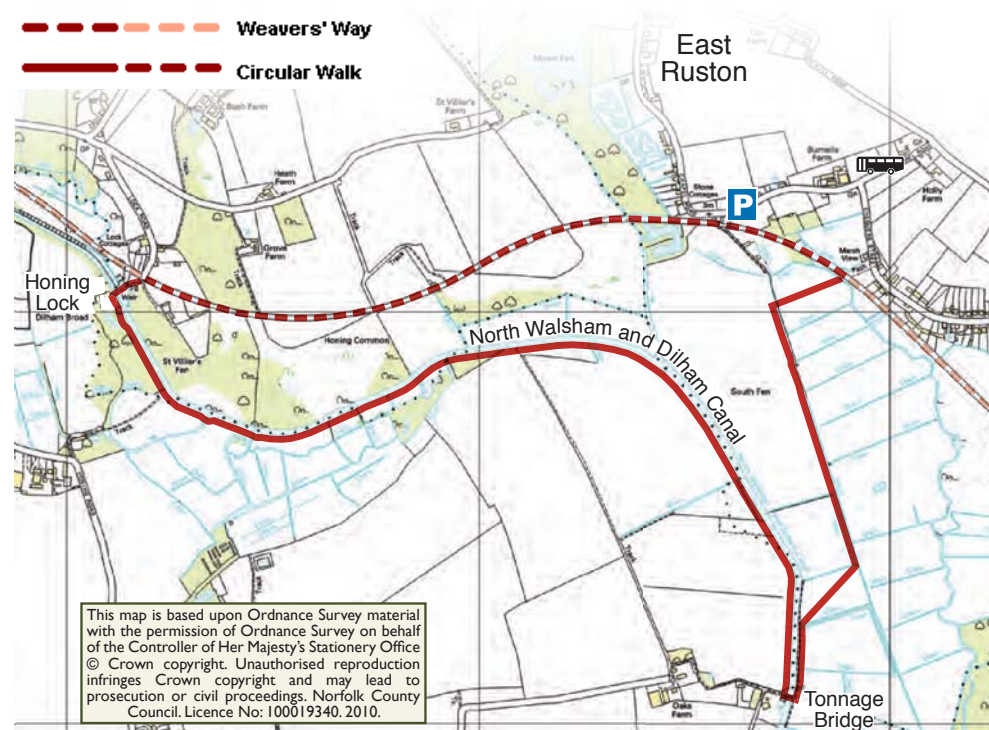
### Directions:

- 1 Leave the car park and turn left to walk along the disused railway line for 300 metres.
- 2 Opposite the first house (set back on the left) turn right at the waymarked public footpath and walk across the bridge. Continue diagonally across the grazed meadow to the gateway. Cross the stile and turn left along the track.
- 3 Follow the track passing through two rambler gates along the way. Where the worn track peters out, walk diagonally right across the meadow towards corner of the field.

### North Walsham and Dilham Canal



- 4 Go through the rambler gate and follow the path with the canal on your right. Pass through another small metal gate before turning right at the canal bridge, passing through a further small wooden gate.
- 5 Cross the bridge and almost immediately after, turn right passing through a small wooden gate onto the marked public footpath. The public footpath follows the edge of the meadow alongside the canal. Follow this public footpath for 1.5 miles, walking through grazing meadows and wet woodland, crossing stiles and ditches with the canal on your right.
- 6 Eventually you will hear the distant sound of rushing water. This is the sound of water falling over the disused Honing lock. Cross the bridge over the lock and then a second bridge over a ditch.



## Walk 7

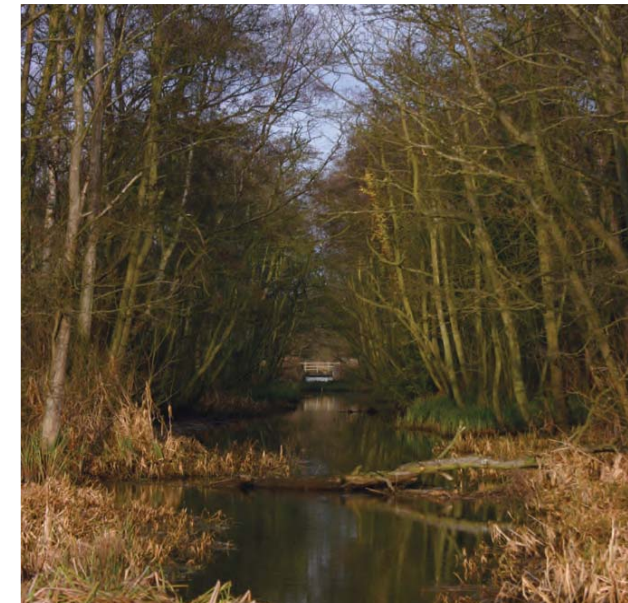
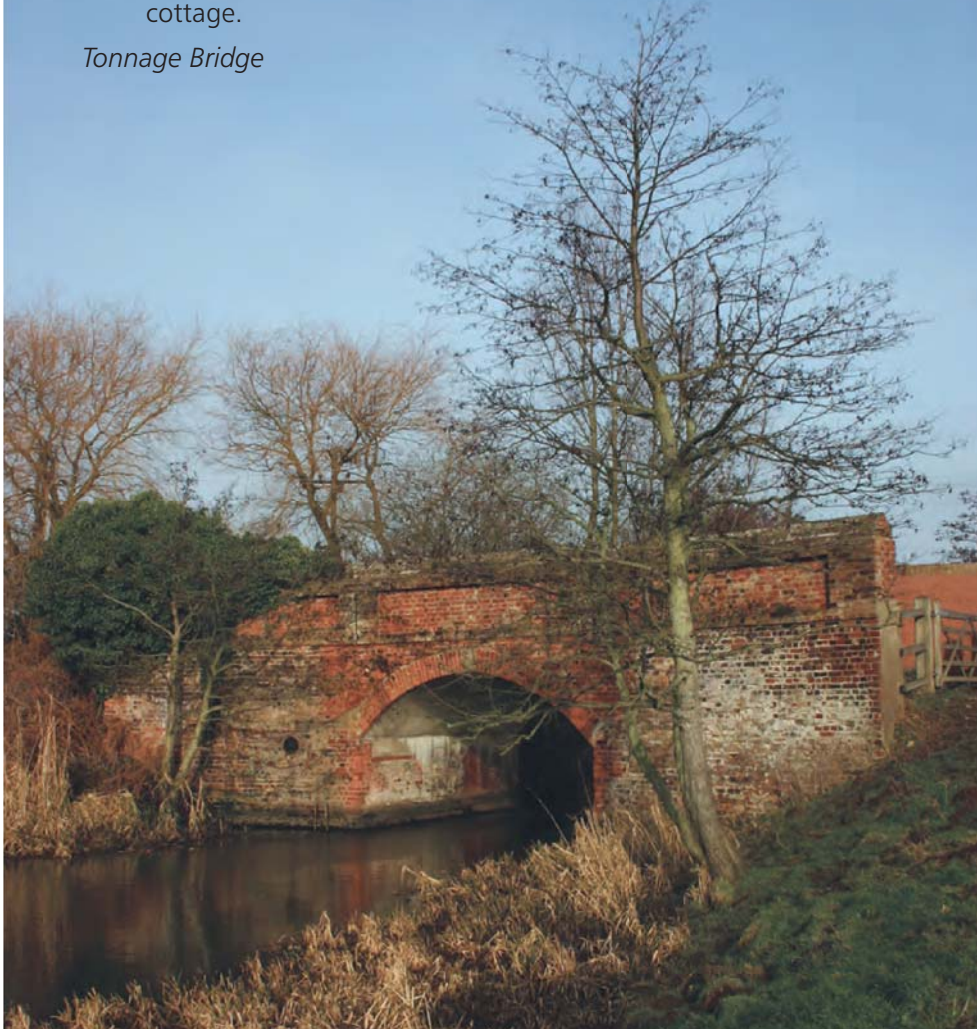
# Weavers' Way East Ruston



[www.norfolktrails.co.uk](http://www.norfolktrails.co.uk)

- 7 Shortly afterwards you reach a track. Turn left here and then immediately right, through the gap next to the gate onto Weavers' Way. Follow the disused railway line for nearly a mile back to the car park which is just beyond the old crossing cottage.

*Tonnage Bridge*



*Honing Lock*

### Points of interest:

- Tonnage Bridge collapsed in 1980 but by 1982 had been rebuilt;
- Honing Lock is today the theoretical head of navigation on the canal. In its heyday it was one of six locks on the canal that could take shallow drafted trading wherries;
- Watch carefully for otters in the canal and the Hundred Stream. Alongside the canal kingfishers can often be seen perched in the overhanging branches;
- The Midland and Great Northern Joint Railway (M&GN) was formed in 1893. In 1958, a British Railways committee recommended closure; and for most of the M&GN the end came on 28th February 1959. The disused railway line is owned and managed by Norfolk County Council and has formed part of Weavers' Way long distance path since the 1980s.