

# **Great Yarmouth Third River Crossing Application for Development Consent Order**

---

## **Document 2.8: Tree Preservation Order and Conservation Area Tree Plans**

---

**Planning Act 2008**

**The Infrastructure Planning (Applications: Prescribed Forms and Procedure)  
Regulations 2009 (as amended) (“APFP”)**

APFP Regulation Number: 5(2)(m) & (o)

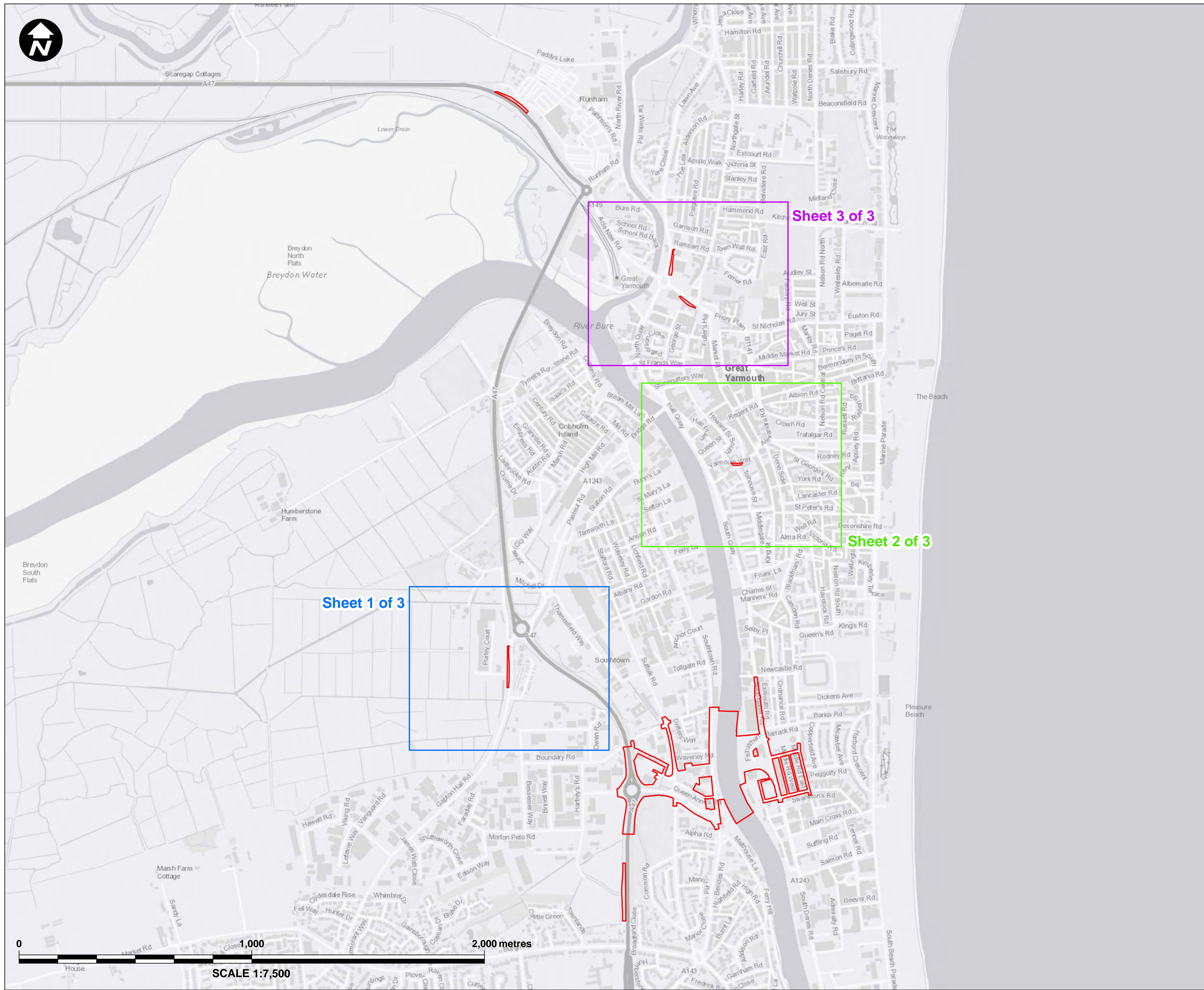
Planning Inspectorate Reference Number: TR010043

Author: Norfolk County Council

Document Reference: 2.8

Version Number: P00

Date: 30<sup>th</sup> April 2019



**Key:**

- Order Limits
- Sheet 1 of 3
- Sheet 2 of 3
- Sheet 3 of 3

**NOTES:**  
 1. This plan should be read in conjunction with the Development Consent Order and the documents it refers to, in particular Schedule 12 of the Development Consent Order.

Mapping reproduced by permission of Ordnance Survey on behalf of HMSO.  
 © Crown copyright and database rights 2018 Ordnance Survey 100019340.


REVISION	DRAWN	CHECKED	APPROVED	DATE

**Norfolk County Council**  
 Tom McCabe  
 Executive Director of  
 Community and Environmental Services  
 Norfolk County Council  
 County Hall, Martineau Lane  
 Norwich NR1 2SG

**PROJECT TITLE**  
**GREAT YARMOUTH  
 THIRD RIVER CROSSING**

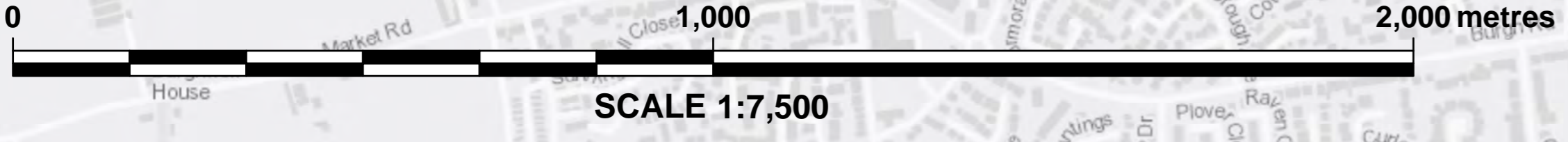
**DRAWING TITLE** DCO DOCUMENT 2.8  
**TREE PRESERVATION ORDER AND  
 CONSERVATION AREA TREE PLANS  
 KEY PLAN  
 (REGULATION 5(2)(m) & (o) & 5(4))**

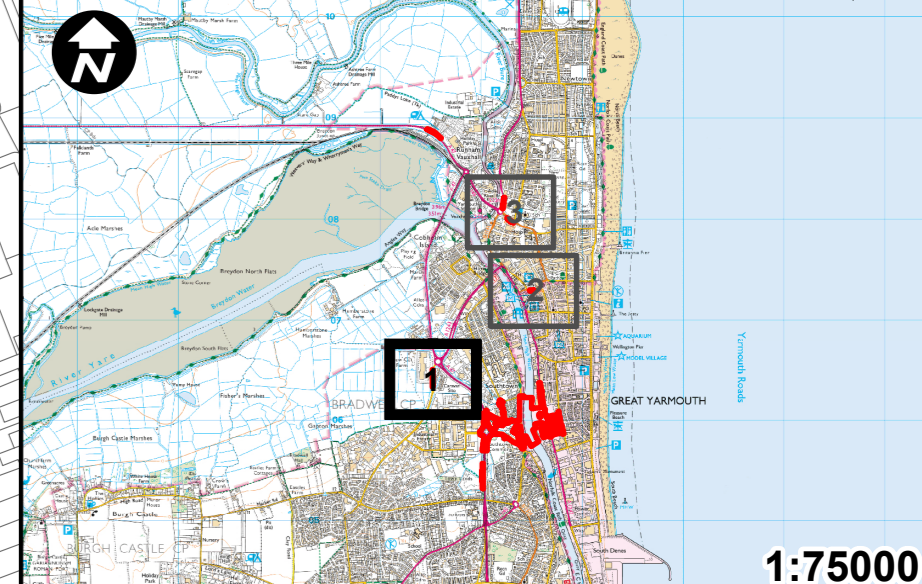
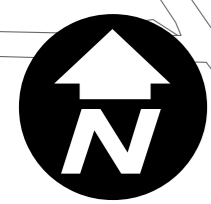
**DRAWING STATUS**  
**FOR DCO APPLICATION**

DRAWN	CHECKED	APPROVED	AUTHORISED
DE	CP	JW	MK

SCALE @ A1 SIZE	DATE	REVISION
1:7,500	11/04/2019	P00

**DRAWING NUMBER**  
 GYTRC-WSP-EGN-XX-DR-EN-1033





**Key:**

- Order Limits
- Area of Tree Preservation Order Group of Trees
- Conservation Areas
- Root Protection Area
- Canopy Spread

**Tree Survey - Point**

- A
- B
- C
- U

**Tree Survey Area**

- A
- B
- C
- U

**NOTES:**  
 1. This plan should be read in conjunction with the Development Consent Order and the documents it refers to, in particular Schedule 12 of the Development Consent Order.

Mapping reproduced by permission of Ordnance Survey on behalf of HMSO.  
 © Crown copyright and database rights 2018 Ordnance Survey 100019340.


REVISION	DRAWN	CHECKED	APPROVED	DATE

**Norfolk County Council**  
 Tom McCabe  
 Executive Director of  
 Community and Environmental Services  
 Norfolk County Council  
 County Hall, Martineau Lane  
 Norwich NR1 2SG

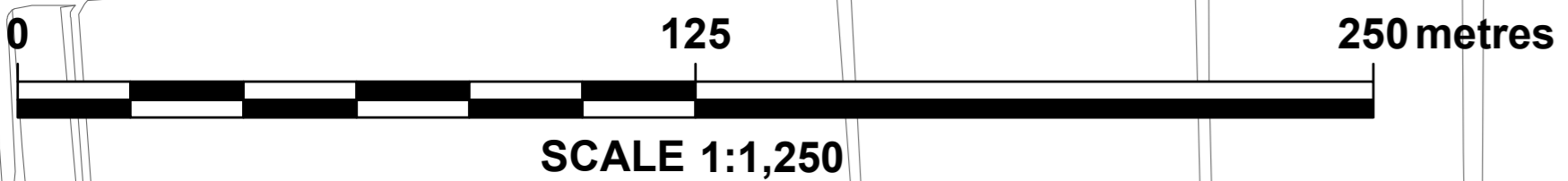
**PROJECT TITLE**  
**GREAT YARMOUTH  
 THIRD RIVER CROSSING**

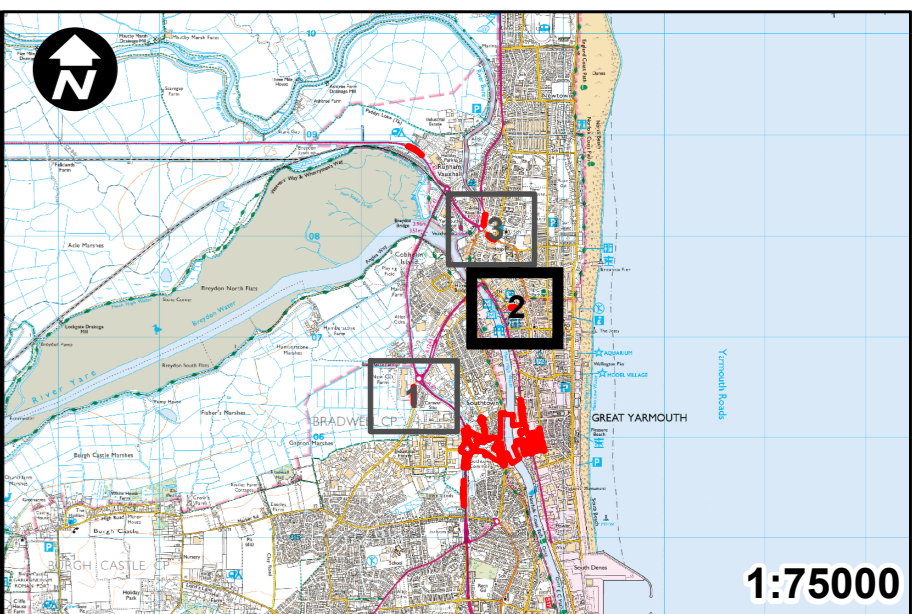
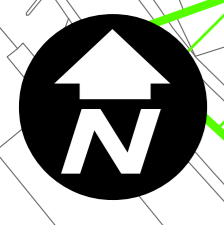
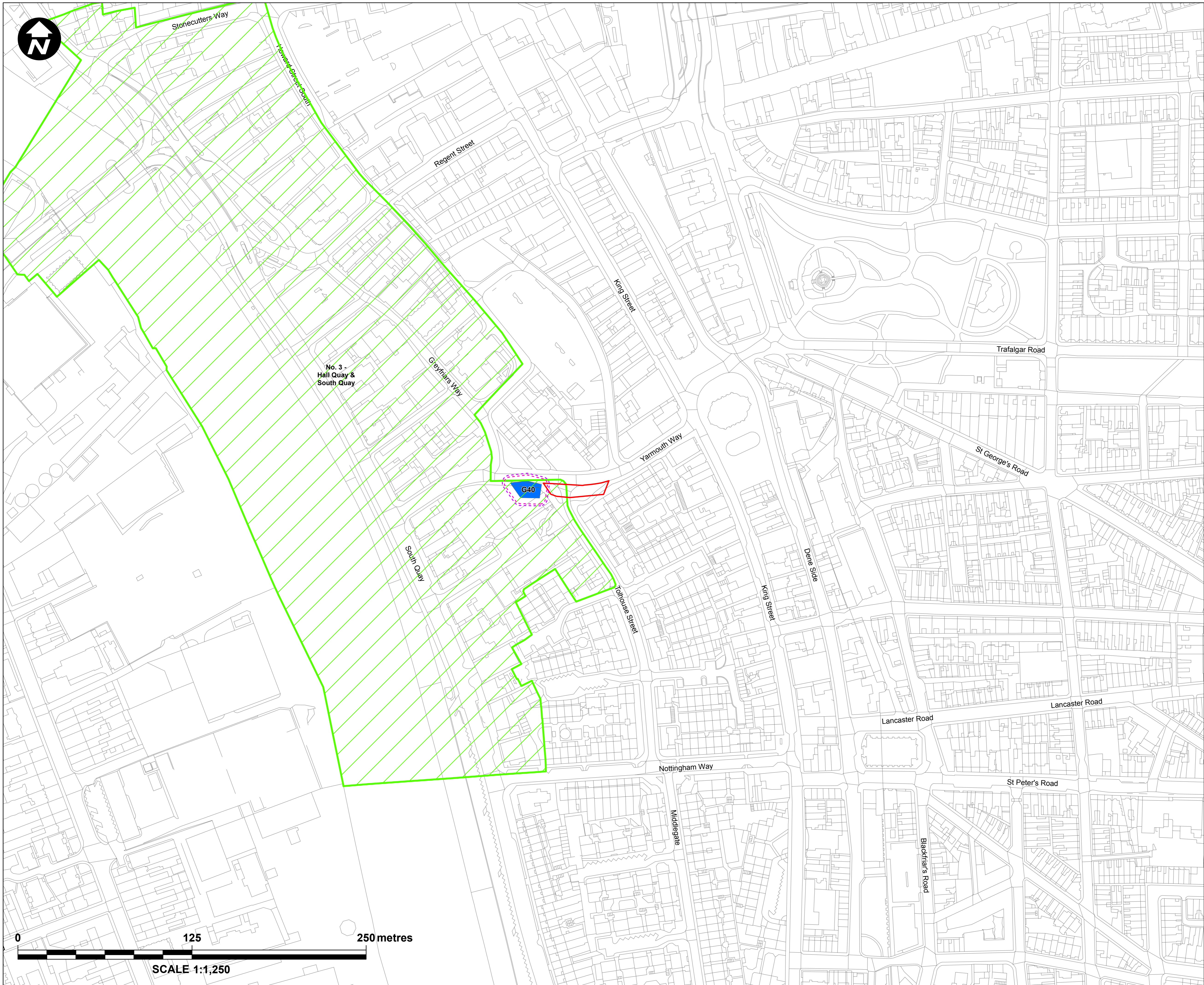
**DRAWING TITLE** DCO DOCUMENT 2.8  
**TREE PRESERVATION ORDER AND  
 CONSERVATION AREA TREE PLANS**  
 SHEET 1 OF 3  
 (REGULATION 5(2)(m) & (o))

**DRAWING STATUS**  
 FOR DCO APPLICATION

DRAWN DE	CHECKED CP	APPROVED JW	AUTHORISED MK
SCALE @ A1 SIZE 1:1,250	DATE 11/04/2019	REVISION P00	

**DRAWING NUMBER**  
 GYTRC-WSP-EGN-XX-DR-EN-1034





**Key:**

- Order Limits
- Area of Tree Preservation Order Group of Trees
- Conservation Areas
- Root Protection Area
- Canopy Spread

**Tree Survey - Point**

- A
- B
- C
- U

**Tree Survey Area**

- A
- B
- C
- U

**NOTES:**  
 1. This plan should be read in conjunction with the Development Consent Order and the documents it refers to, in particular Schedule 12 of the Development Consent Order.

Mapping reproduced by permission of Ordnance Survey on behalf of HMSO.  
 © Crown copyright and database rights 2018 Ordnance Survey 100019340.

REVISION	DRAWN	CHECKED	APPROVED	DATE

**Norfolk County Council**  
 Tom McCabe  
 Executive Director of  
 Community and Environmental Services  
 Norfolk County Council  
 County Hall, Martineau Lane  
 Norwich NR1 2SG

**PROJECT TITLE**  
**GREAT YARMOUTH  
 THIRD RIVER CROSSING**

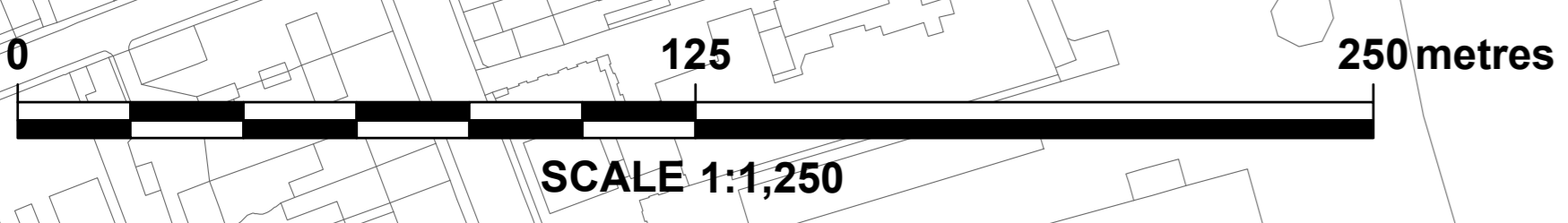
**DRAWING TITLE** DCO DOCUMENT 2.8  
**TREE PRESERVATION ORDER AND  
 CONSERVATION AREA TREE PLANS**  
 SHEET 2 OF 3  
 (REGULATION 5(2)(m) & (o))

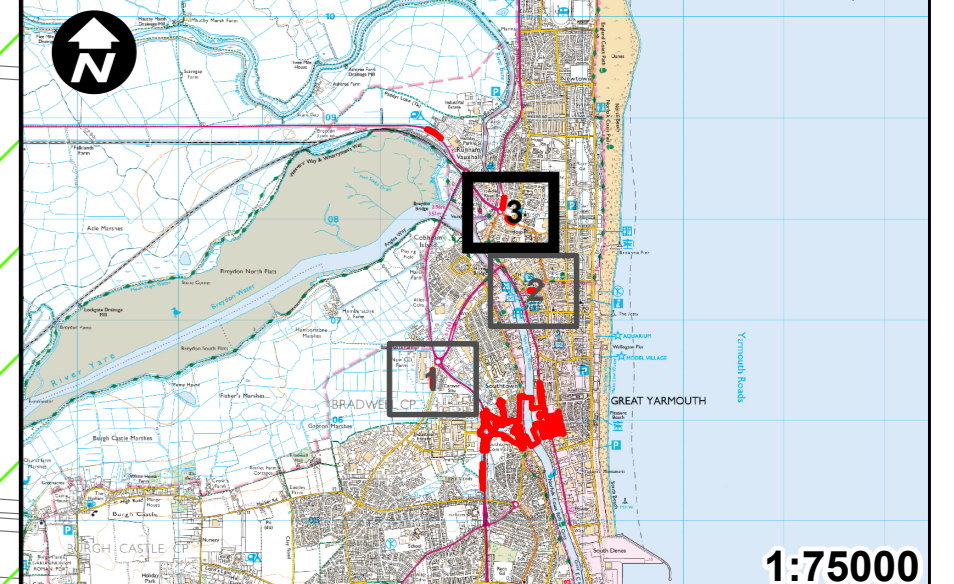
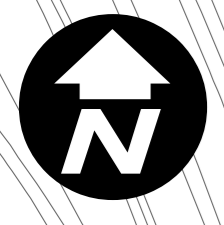
**DRAWING STATUS**  
 FOR DCO APPLICATION

DRAWN	CHECKED	APPROVED	AUTHORISED
DE	CP	JW	MK

SCALE @ A1 SIZE	DATE	REVISION
1:1,250	11/04/2019	P00

**DRAWING NUMBER**  
 GYTRC-WSP-EGN-XX-DR-EN-1035





**Key:**

- Order Limits
- Area of Tree Preservation Order Group of Trees
- Conservation Areas
- Root Protection Area
- Canopy Spread

**Tree Survey - Point**

- A
- B
- C
- U

**Tree Survey Area**

- A
- B
- C
- U

**NOTES:**  
 1. This plan should be read in conjunction with the Development Consent Order and the documents it refers to, in particular Schedule 12 of the Development Consent Order.

Mapping reproduced by permission of Ordnance Survey on behalf of HMSO.  
 © Crown copyright and database rights 2018 Ordnance Survey 100019340.

REVISION	DRAWN	CHECKED	APPROVED	DATE

**Norfolk County Council**  
 Tom McCabe  
 Executive Director of  
 Community and Environmental Services  
 Norfolk County Council  
 County Hall, Martineau Lane  
 Norwich NR1 2SG

**PROJECT TITLE**  
**GREAT YARMOUTH  
 THIRD RIVER CROSSING**

**DRAWING TITLE**  
 DCO DOCUMENT 2.8  
 TREE PRESERVATION ORDER AND  
 CONSERVATION AREA TREE PLANS  
 SHEET 3 OF 3  
 (REGULATION 5(2)(m) & (o))

**DRAWING STATUS**  
 FOR DCO APPLICATION

DRAWN	CHECKED	APPROVED	AUTHORISED
DE	CP	JW	MK

SCALE @ A1 SIZE	DATE	REVISION
1:1,250	11/04/2019	P00

**DRAWING NUMBER**  
 GYTRC-WSP-EGN-XX-DR-EN-1036

