

Great Yarmouth Third River Crossing

Application for Development Consent Order

Document 6.3: Environmental Statement Volume III: ES Figures – Chapter 17

Planning Act 2008

**The Infrastructure Planning (Applications: Prescribed Forms and Procedure)
Regulations 2009 (as amended) (“APFP”)**

APFP regulation Number: 5(2)(a)

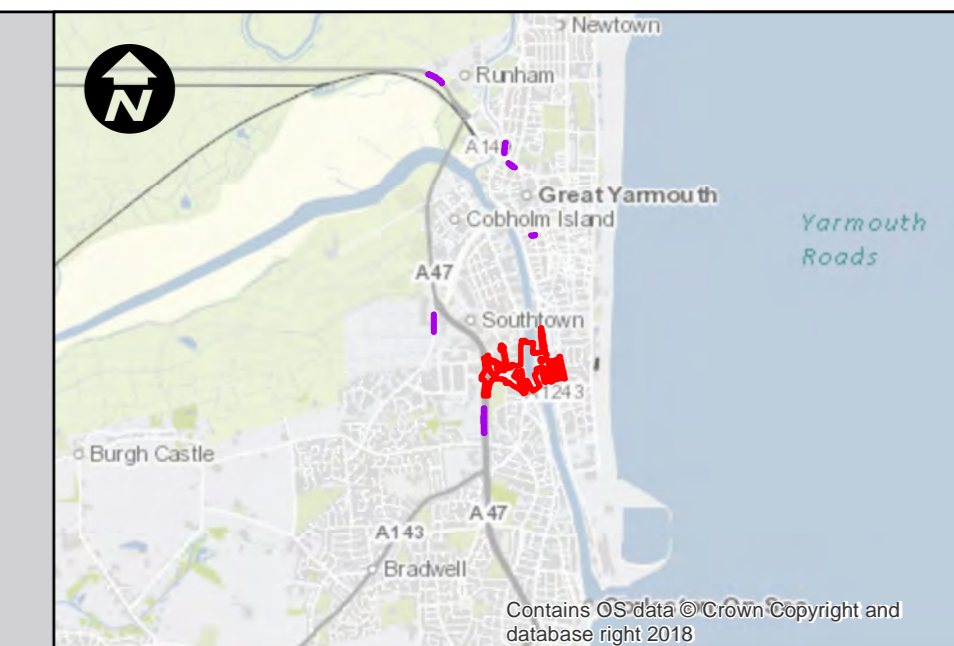
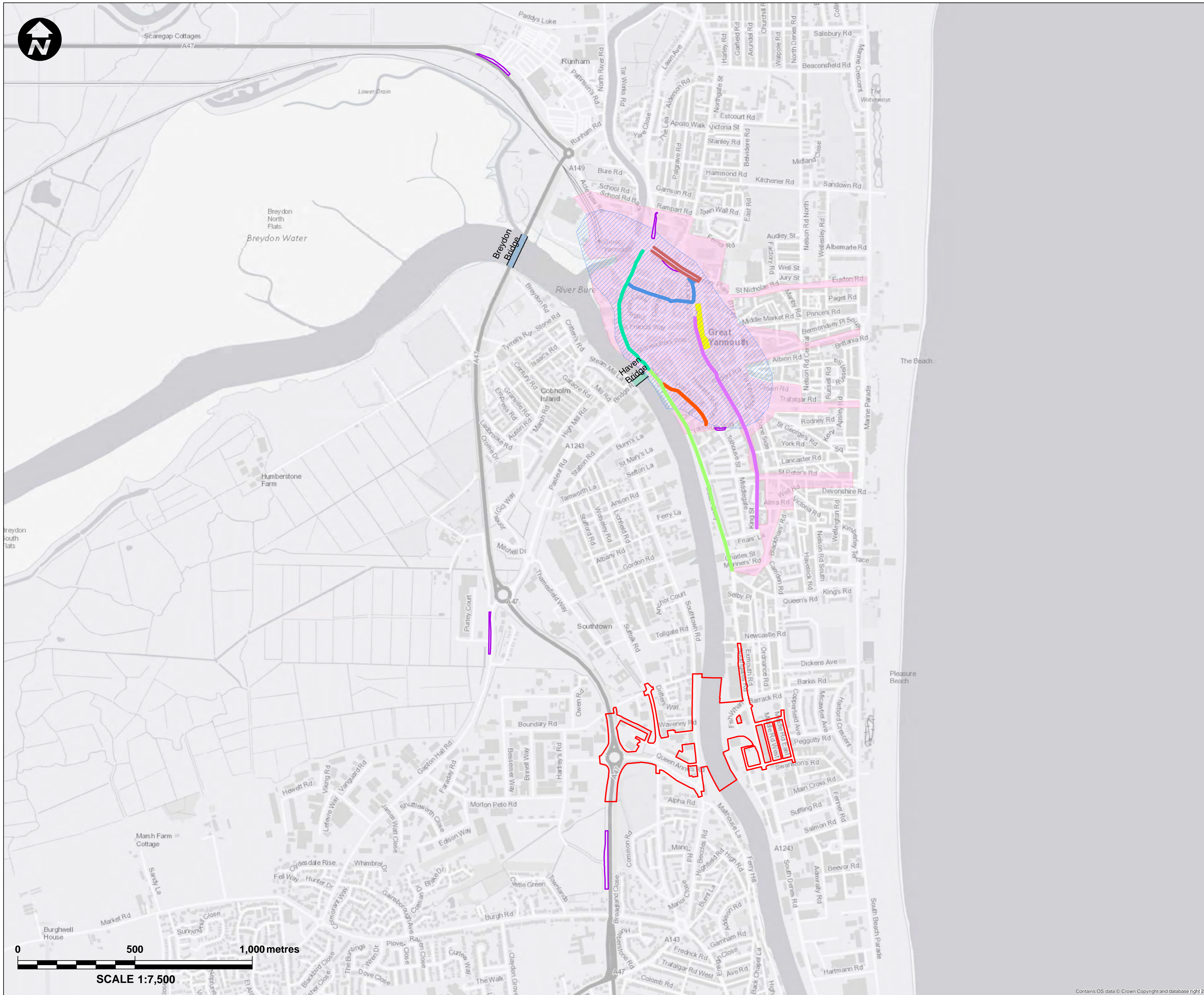
Planning Inspectorate Reference Number: TR010043

Author: Norfolk County Council

Document Reference: 6.3 – ES Figures: Chapter 17

Version Number: 0 – Revision for Submission

Date: 30 April 2019



Key:

- Principal Application Site
- Satellite Application Sites
- Investment area
- Market Place
- Masterplan Study Area

Significant streets

- Fuller's Hill
- Hall Plain
- King Street
- North Quay
- South Quay
- The Conge

Mapping reproduced by permission of Ordnance Survey on behalf of HMSO.
 © Crown copyright and database rights 2018 Ordnance Survey 100019340.

REVISION	DRAWN	CHECKED	APPROVED	DATE
----------	-------	---------	----------	------

DESCRIPTION

Norfolk County Council
 Tom McCabe
 Executive Director of
 Community and Environmental Services
 Norfolk County Council
 County Hall, Martineau Lane
 Norwich NR1 2SG

PROJECT TITLE

GREAT YARMOUTH THIRD RIVER CROSSING

DRAWING TITLE

FIGURE 17.1 TOWN CENTRE MASTERPLAN INVESTMENT AREA (REGULATION 5(2)(a))

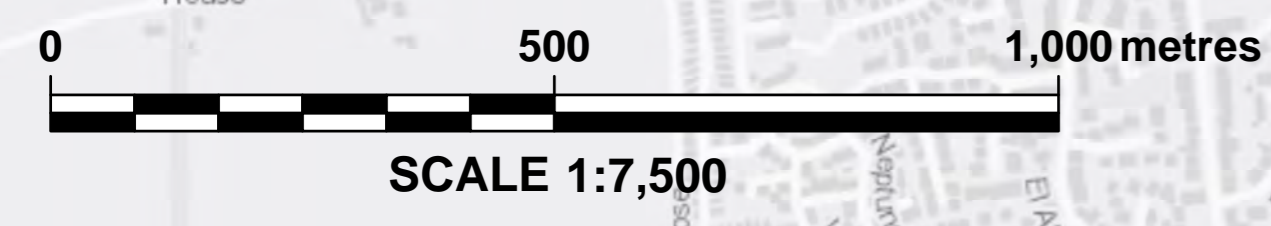
DRAWING STATUS

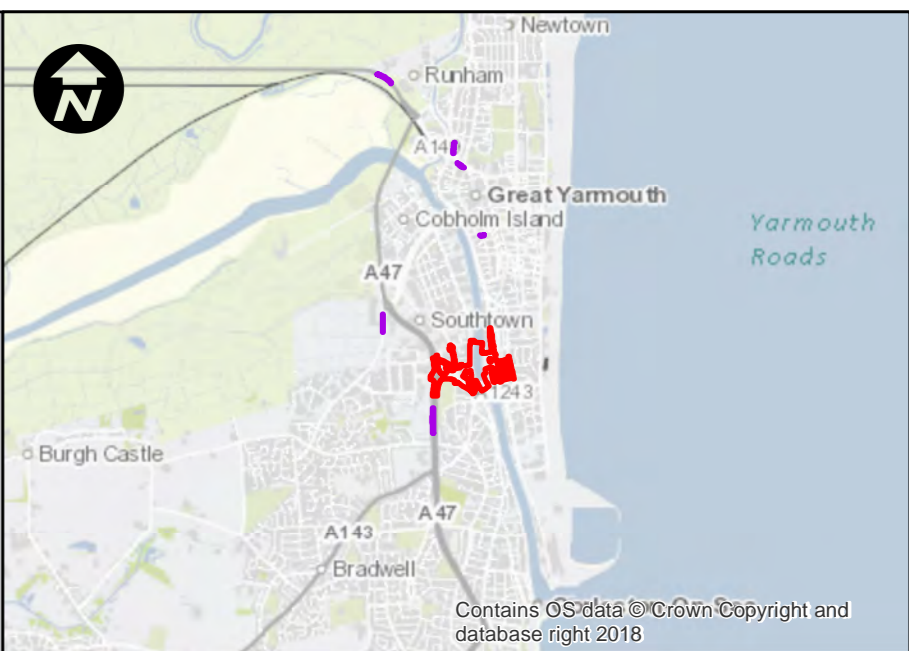
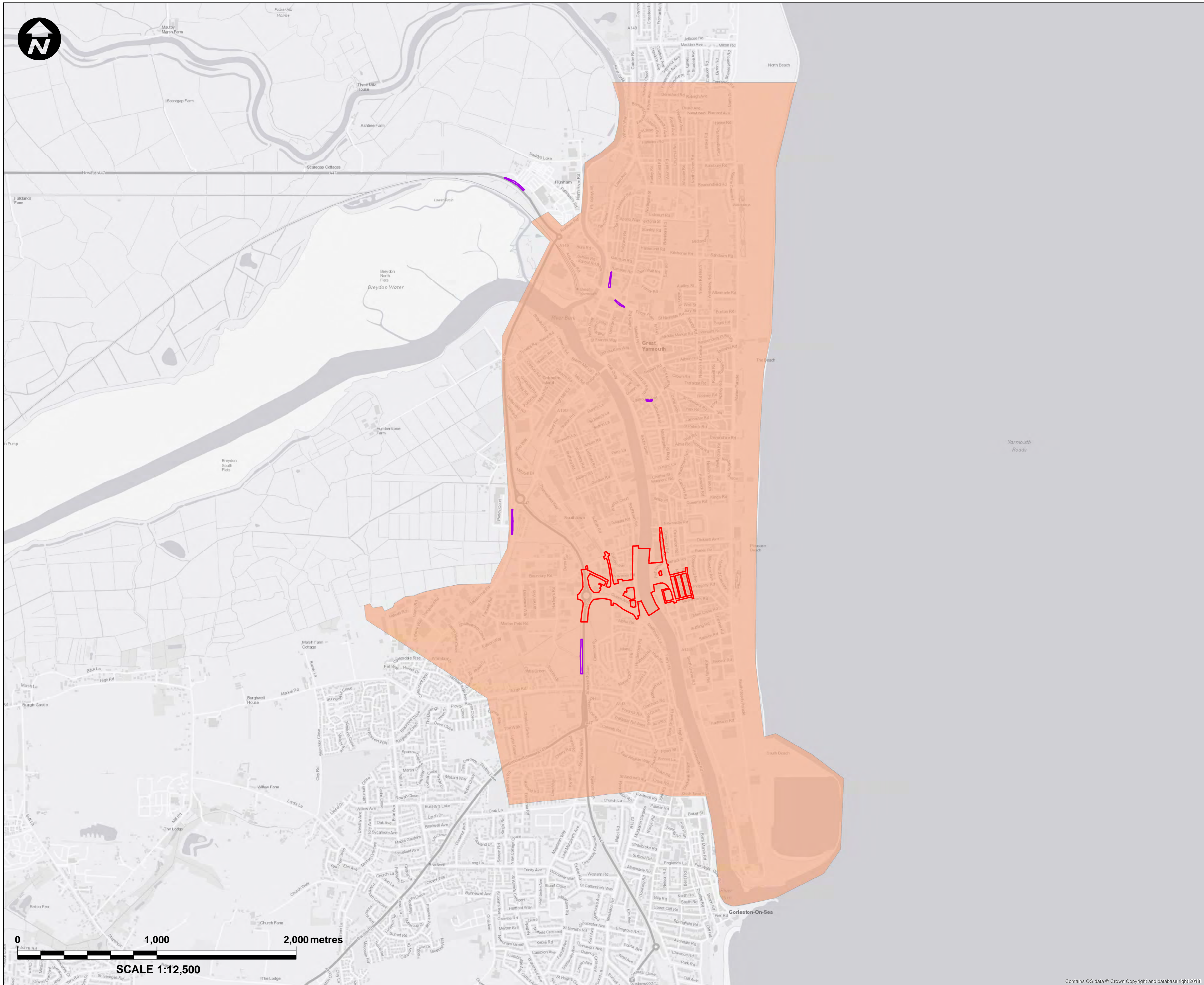
FOR DCO APPLICATION

DRAWN	CHECKED	APPROVED	AUTHORISED
PM	IG-E	HH	MK
SCALE @ A1 SIZE 1:7,500		DATE 29/03/2019	REVISION P00

DRAWING NUMBER

GYTRC-WSP-EGN-XX-DR-EN-2132





- Key:**
- Principal Application Site
 - Satellite Application Sites
 - Microsimulation model

Mapping reproduced by permission of Ordnance Survey on behalf of HMSO.
 © Crown copyright and database rights 2018 Ordnance Survey 100019340.

REVISION	DRAWN	CHECKED	APPROVED	DATE

Norfolk County Council
 Tom McCabe
 Executive Director of
 Community and Environmental Services
 Norfolk County Council
 County Hall, Martineau Lane
 Norwich NR1 2SG

PROJECT TITLE
**GREAT YARMOUTH
 THIRD RIVER CROSSING**

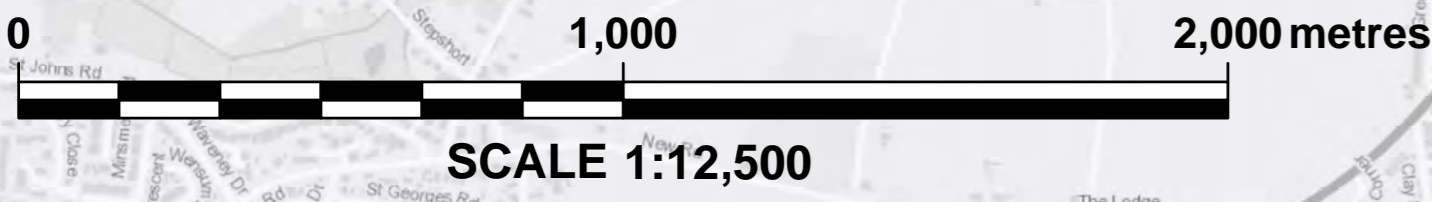
DRAWING TITLE
**FIGURE 17.2
 MICROSIMULATION MODEL AREA
 (REGULATION 5(2)(a))**

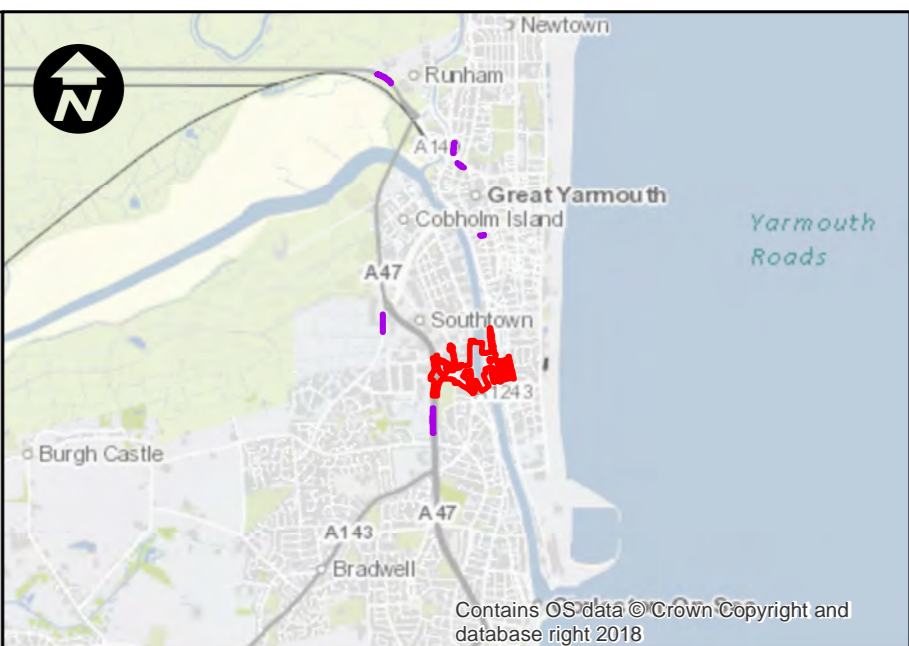
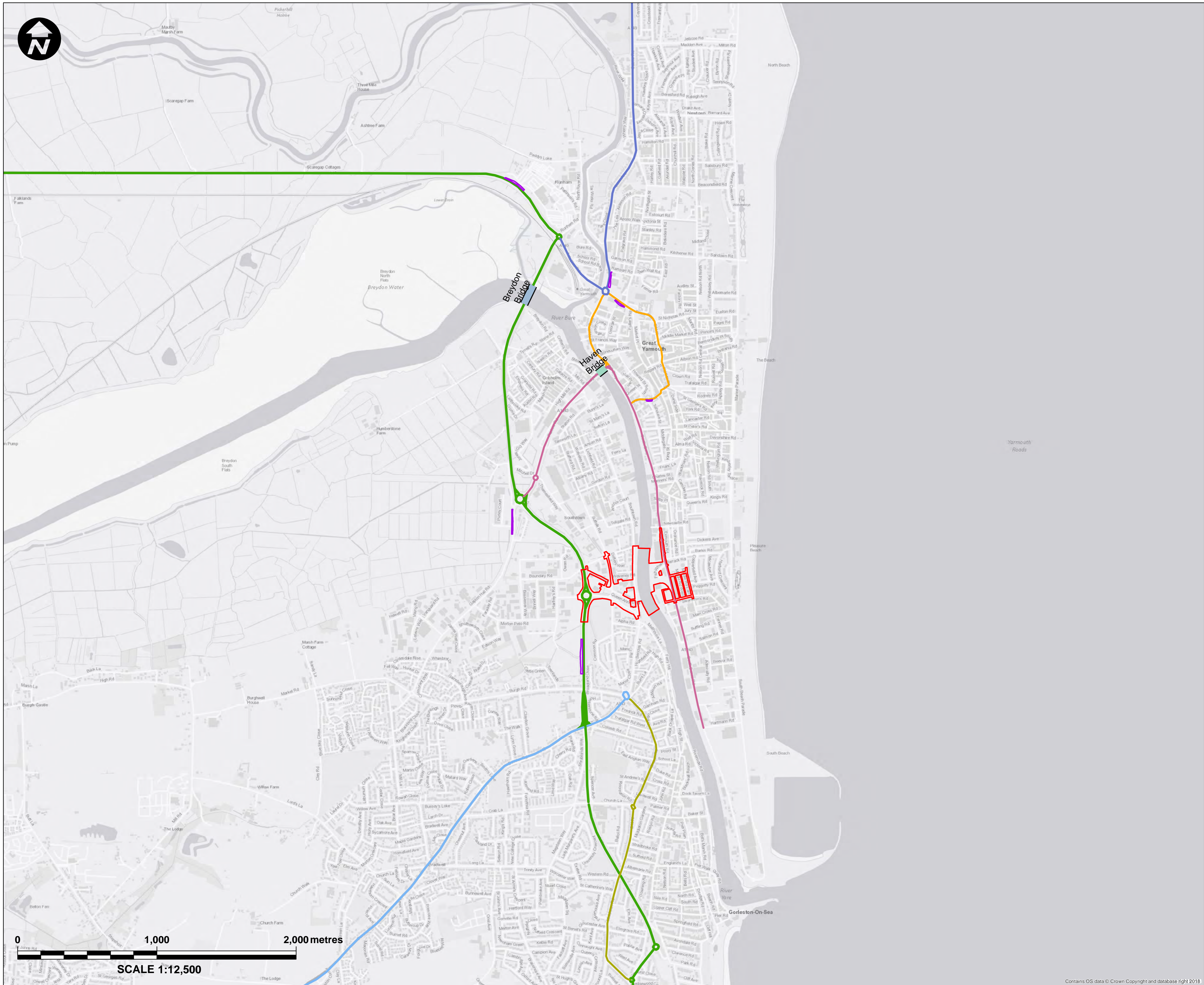
DRAWING STATUS
FOR DCO APPLICATION

DRAWN	CHECKED	APPROVED	AUTHORISED
PM	IG-E	HH	MK

SCALE @ A1 SIZE	DATE	REVISION
1:12,500	29/03/2019	P00

DRAWING NUMBER
 GYTRC-WSP-EGN-XX-DR-EN-2133





Key:

- Principal Application Site
- Satellite Application Sites

Bridges

- Breydon Bridge
- Haven Bridge

Road Network

- A1243
- A47
- A143
- A149
- B1141
- B1370

Mapping reproduced by permission of Ordnance Survey on behalf of HMSO.
 © Crown copyright and database rights 2018 Ordnance Survey 100019340.

REVISION	DRAWN	CHECKED	APPROVED	DATE

DESCRIPTION

Norfolk County Council
 Tom McCabe
 Executive Director of
 Community and Environmental Services
 Norfolk County Council
 County Hall, Martineau Lane
 Norwich NR1 2SG

PROJECT TITLE

GREAT YARMOUTH THIRD RIVER CROSSING

DRAWING TITLE

FIGURE 17.3 MAIN ROADS AROUND THE SCHEME (REGULATION 5(2)(a))

DRAWING STATUS

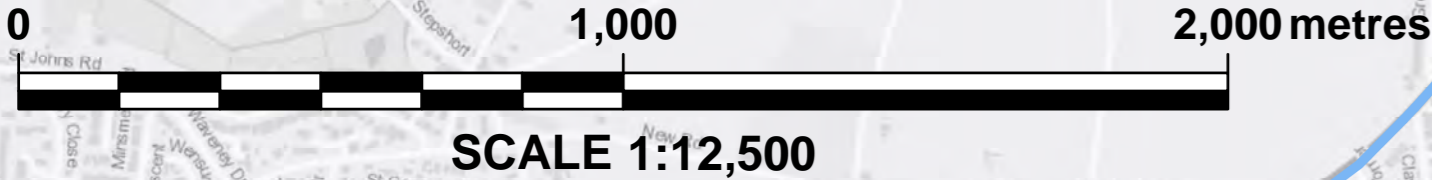
FOR DCO APPLICATION

DRAWN	CHECKED	APPROVED	AUTHORISED
PM	IG-E	HH	MK

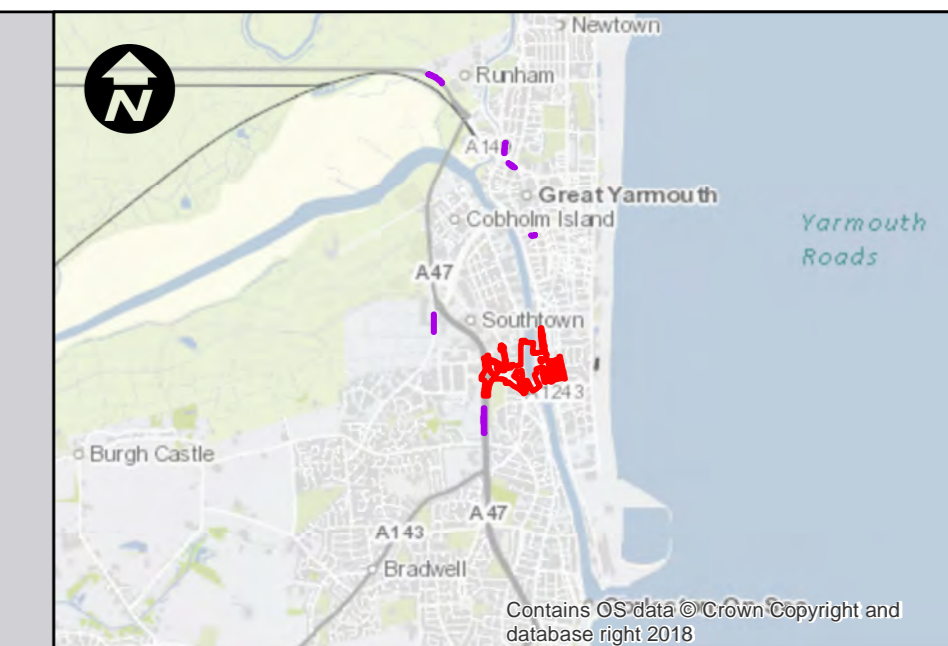
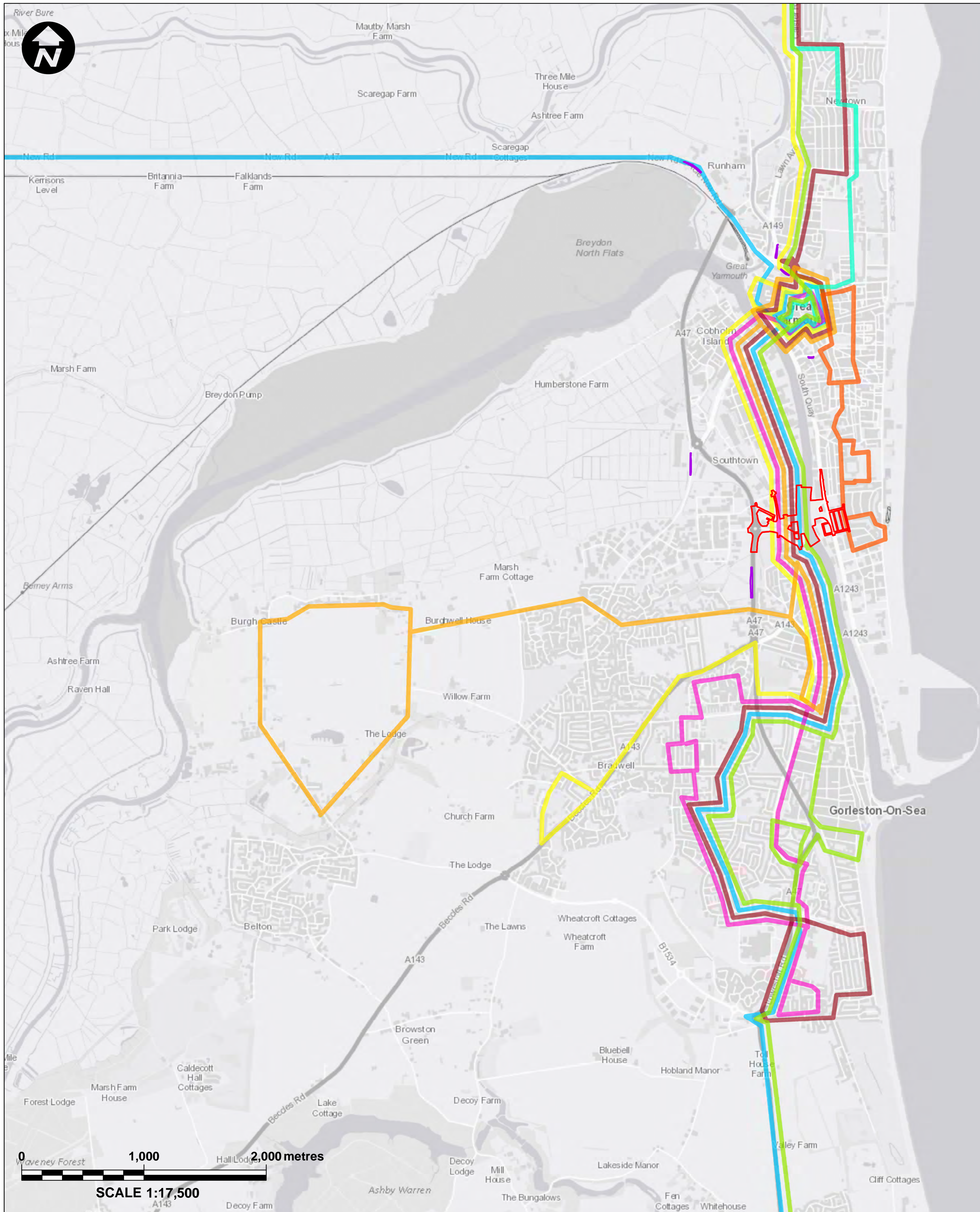
SCALE @ A1 SIZE	DATE	REVISION
1:12,500	29/03/2019	P00

DRAWING NUMBER

GYTRC-WSP-EGN-XX-DR-EN-2134



Contains OS data © Crown Copyright and database right 2018



- Key:**
- Principal Application Site
 - Satellite Application Sites
 - Route 1
 - Route 2
 - Route 4
 - Route 5
 - Route 8
 - Routes 6, 7, 9
 - Route 271
 - Route X11 and X1

Mapping reproduced by permission of Ordnance Survey on behalf of HMSO.
 © Crown copyright and database rights 2018 Ordnance Survey 100019340.

REVISION	DRAWN	CHECKED	APPROVED	DATE

Norfolk County Council
 Tom McCabe
 Executive Director of
 Community and Environmental Services
 Norfolk County Council
 County Hall, Martineau Lane
 Norwich NR1 2SG

PROJECT TITLE
**GREAT YARMOUTH
 THIRD RIVER CROSSING**

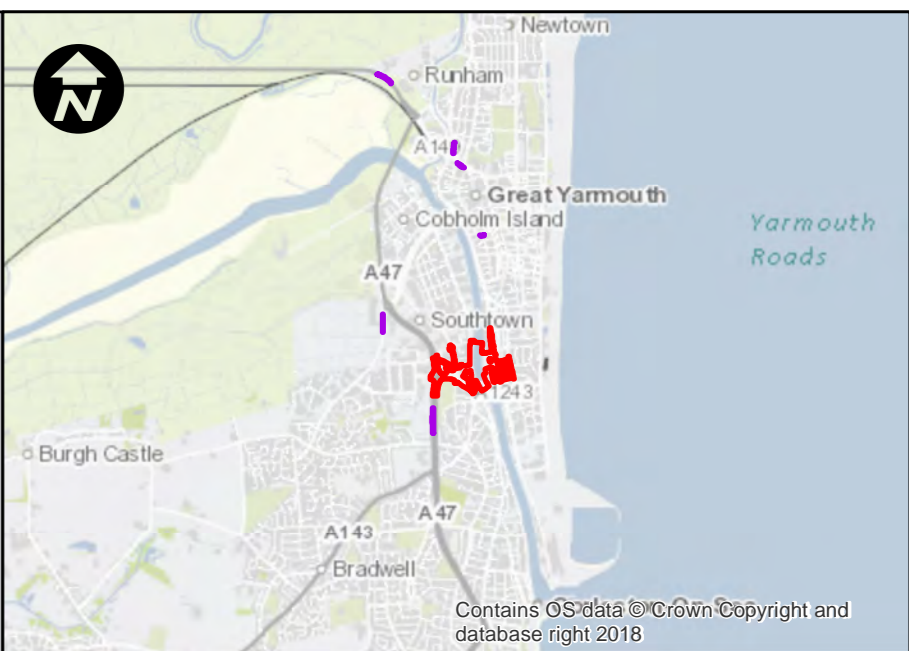
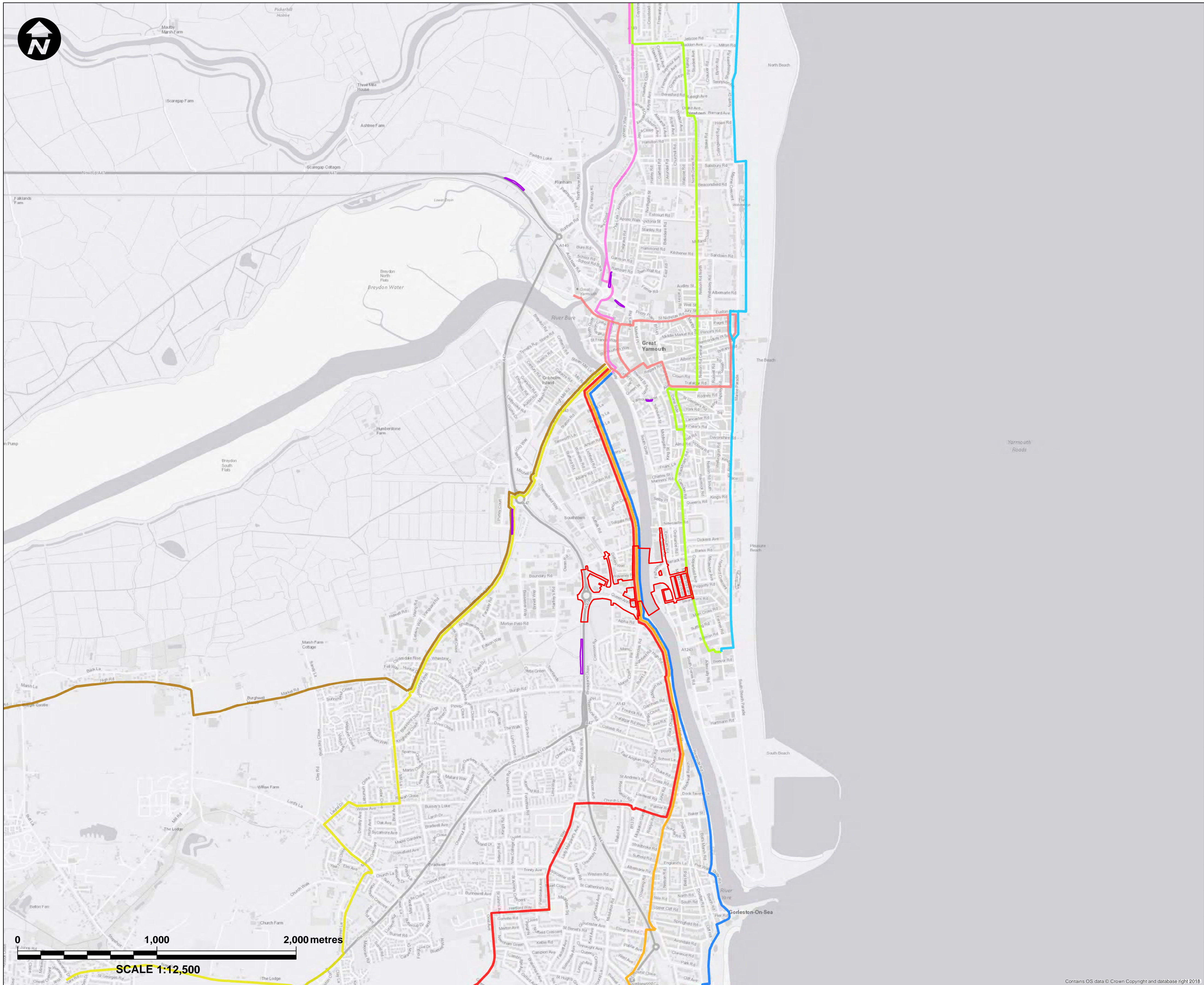
DRAWING TITLE
**FIGURE 17.4
 PUBLIC TRANSPORT
 NETWORK
 (REGULATION 5(2)(a))**

DRAWING STATUS
FOR DCO APPLICATION

DRAWN	CHECKED	APPROVED	AUTHORISED
PM	IG-E	HH	MK

SCALE @ A1 SIZE	DATE	REVISION
1:17,500	29/03/2019	P00

DRAWING NUMBER
 GYTRC-WSP-EGN-XX-DR-EN-2135



- Key:**
- Principal Application Site
 - Satellite Application Sites
- Cycling routes**
- Caister - South Denes
 - NCR 30 (Sustrans)
 - NCR 517 (Sustrans)
 - North Denes - South Denes
 - Town Centre - Belton
 - Town Centre - Bradwell
 - Town Centre - Burgh Castle
 - Town Centre - Gorleston
 - Town Centre Orbital

Mapping reproduced by permission of Ordnance Survey on behalf of HMSO.
 © Crown copyright and database rights 2018 Ordnance Survey 100019340.

REVISION	DRAWN	CHECKED	APPROVED	DATE

Norfolk County Council
 Tom McCabe
 Executive Director of
 Community and Environmental Services
 Norfolk County Council
 County Hall, Martineau Lane
 Norwich NR1 2SG

PROJECT TITLE
**GREAT YARMOUTH
 THIRD RIVER CROSSING**

DRAWING TITLE
**FIGURE 17.5
 KEY CYCLE ROUTES
 (REGULATION 5(2)(a))**

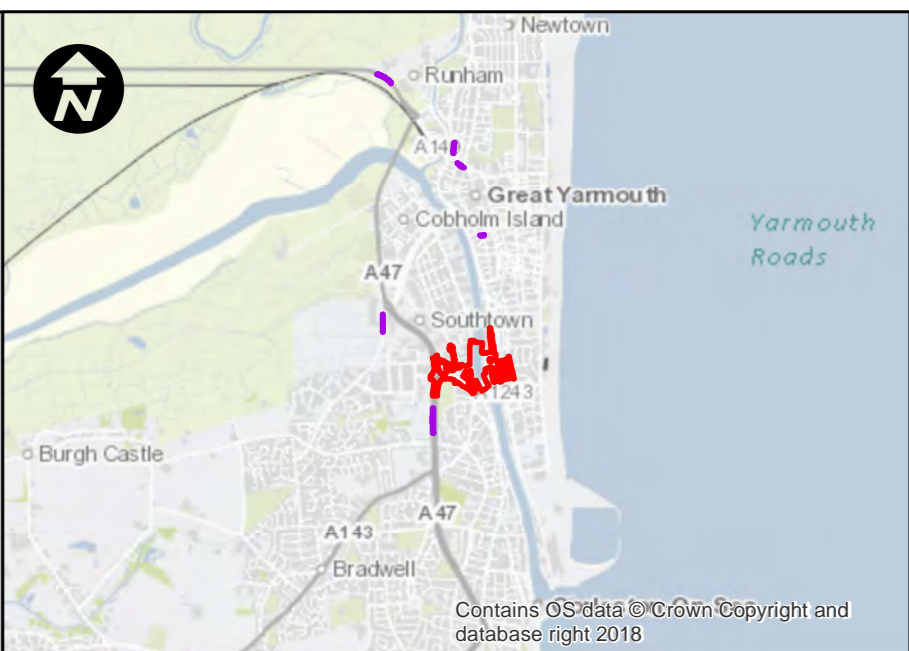
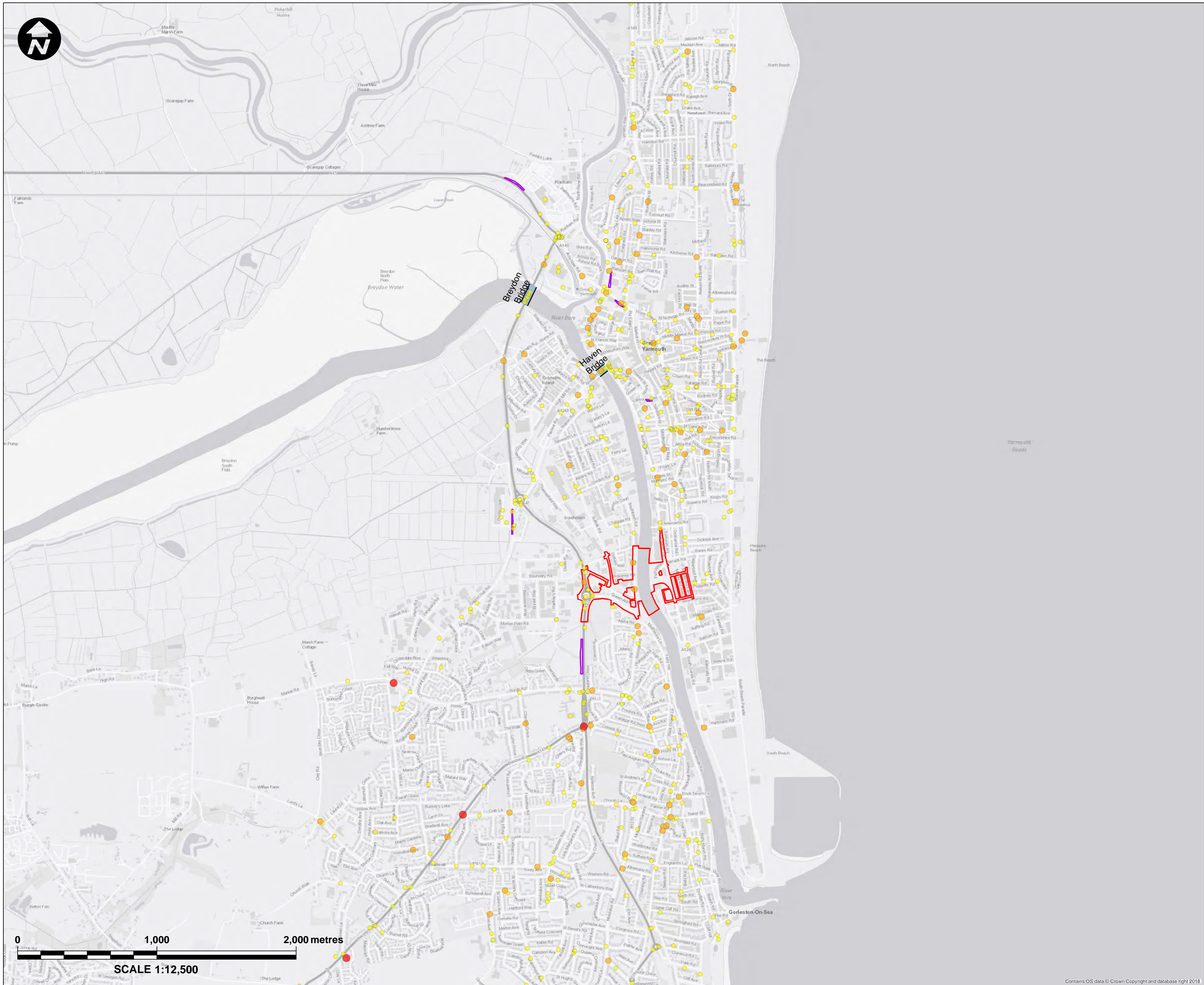
DRAWING STATUS
FOR DCO APPLICATION

DRAWN	CHECKED	APPROVED	AUTHORISED
PM	IG-E	HH	MK

SCALE @ A1 SIZE	DATE	REVISION
1:12,500	29/03/2019	P00

DRAWING NUMBER
 GYTRC-WSP-EGN-XX-DR-EN-2136

Contains OS data © Crown Copyright and database right 2018



Key:

- Principal Application Site
- Satellite Application Sites

Accident Severity

- Fatal
- Serious
- Slight

Bridges

- Breydon Bridge
- Haven Bridge

Mapping reproduced by permission of Ordnance Survey on behalf of HMSO.
 © Crown copyright and database rights 2018 Ordnance Survey 100019340.

REVISION	DRAWN	CHECKED	APPROVED	DATE

Norfolk County Council
 Tom McCabe
 Executive Director of
 Community and Environmental Services
 Norfolk County Council
 County Hall, Martineau Lane
 Norwich NR1 2SG

PROJECT TITLE
**GREAT YARMOUTH
 THIRD RIVER CROSSING**

DRAWING TITLE
**FIGURE 17.6
 ACCIDENT SEVERITY
 (REGULATION 5(2)(a))**

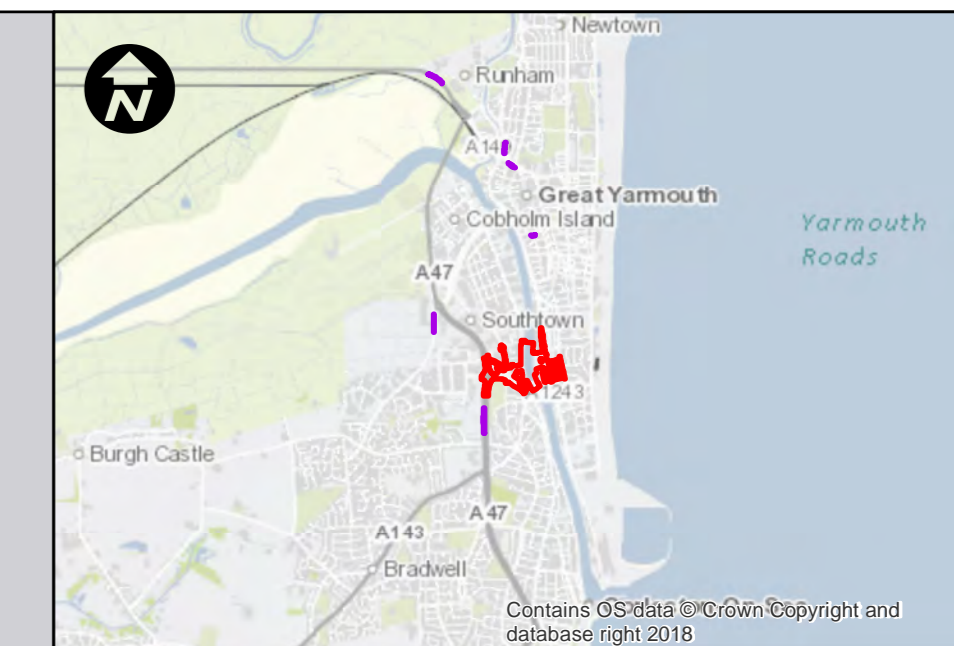
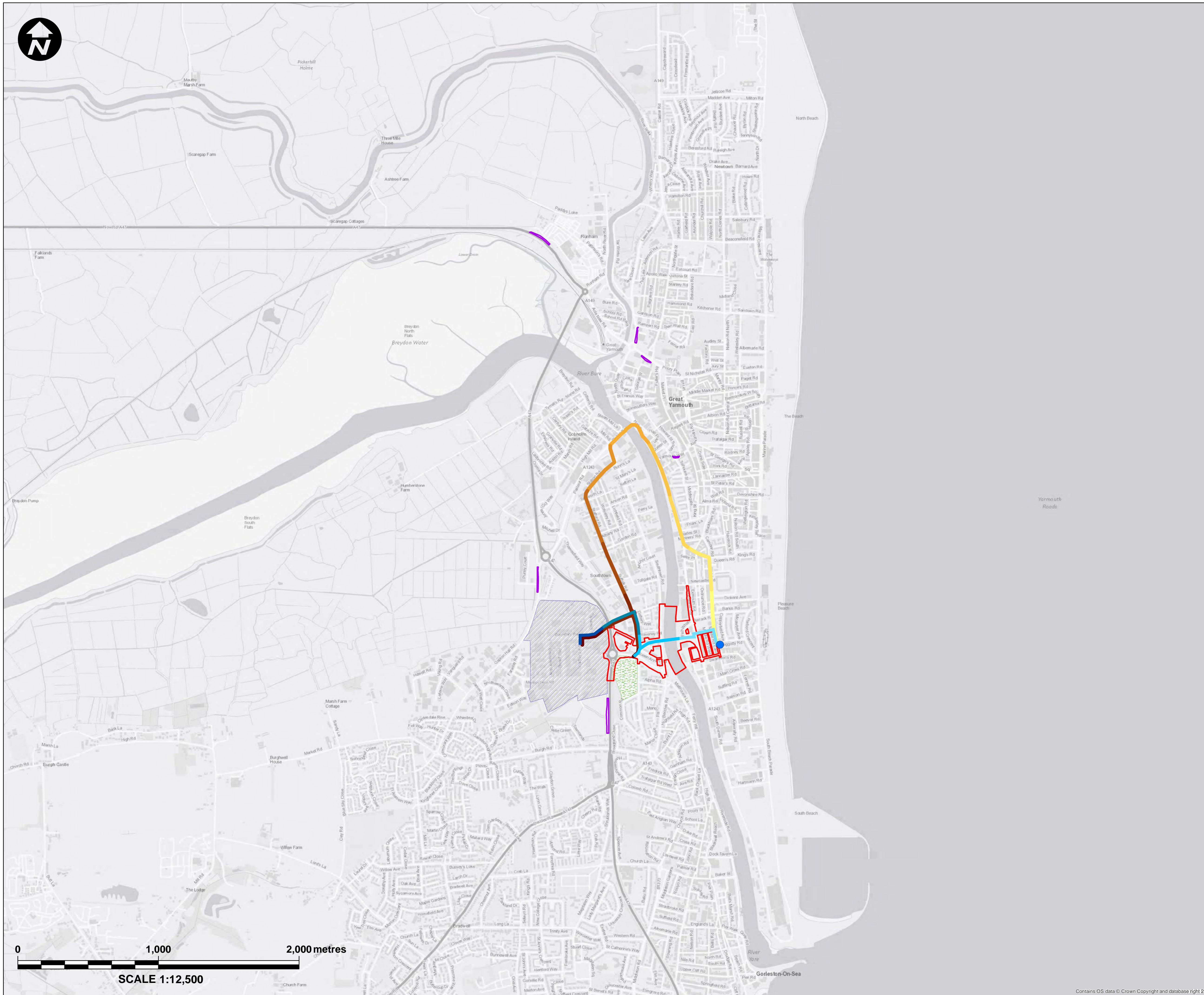
DRAWING STATUS
FOR DCO APPLICATION

DRAWN	CHECKED	APPROVED	AUTHORISED
DE	HF	JW	MK

SCALE @ A1 SIZE	DATE	REVISION
1:12,500	16/04/2019	P00

DRAWING NUMBER
 GYTRC-WSP-EGN-XX-DR-EN-2137

Contains OS data © Crown Copyright and database right 2018



Key:

- Principal Application Site
- Satellite Application Sites
- Peggotty Road Community Centre
- Harfreys Industrial Estate
- Southtown Common

Existing Routes

- 5 minutes walk (0 - 400m)
- 10 minutes walk (401 - 800m)
- 15 minutes walk (801 - 1,200m)
- 20 minutes walk (1,201 - 1,600m)
- 25 minutes walk (1,601 - 2,000m)
- 30 minutes walk (2,001 - 2,400m)
- 35 minutes walk (2,401 - 2,800m)
- 40 minutes walk (2,801 - 3,200m)
- 45 minutes walk (3,201 - 3,600m)
- 50 minutes walk (3,601 - 4,000m)

Proposed Routes

- 5 minutes walk (0 - 400m)
- 10 minutes walk (401 - 800m)
- 15 minutes walk (801 - 1,200m)
- 20 minutes walk (1,201 - 1,600m)

Mapping reproduced by permission of Ordnance Survey on behalf of HMSO.
 © Crown copyright and database rights 2018 Ordnance Survey 100019340.

REVISION	DRAWN	CHECKED	APPROVED	DATE

DESCRIPTION

Norfolk County Council
 Tom McCabe
 Executive Director of
 Community and Environmental Services
 Norfolk County Council
 County Hall, Martineau Lane
 Norwich NR1 2SG

PROJECT TITLE

GREAT YARMOUTH THIRD RIVER CROSSING

DRAWING TITLE

FIGURE 17.7
 CHANGE IN WALKING TIMES FROM
 PEGGOTTY ROAD COMMUNITY CENTRE
 TO HARFREYS INDUSTRIAL ESTATE
 AND SOUTHTOWN COMMON
 (REGULATION 5(2)(a))

DRAWING STATUS

FOR DCO APPLICATION

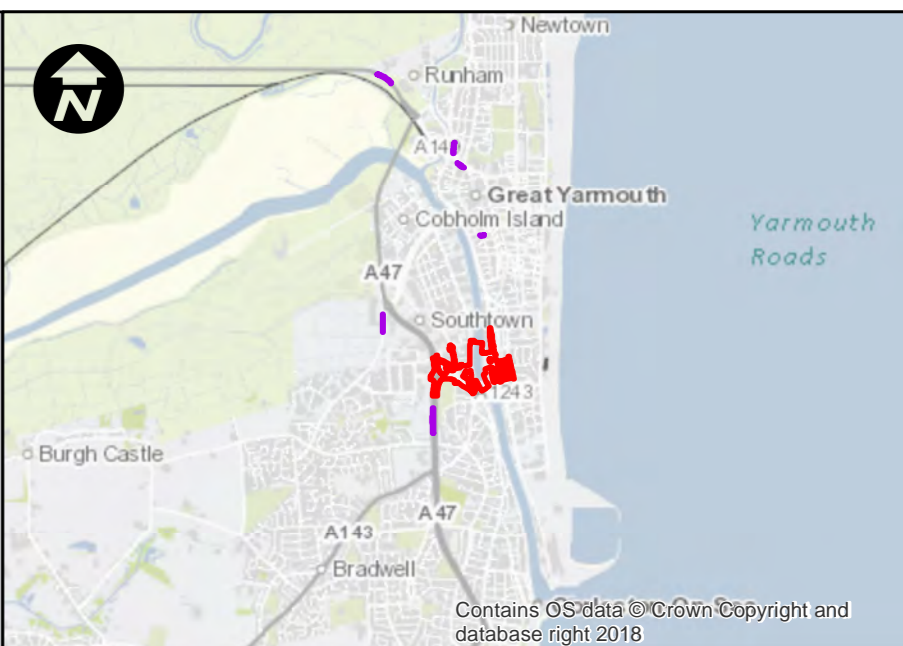
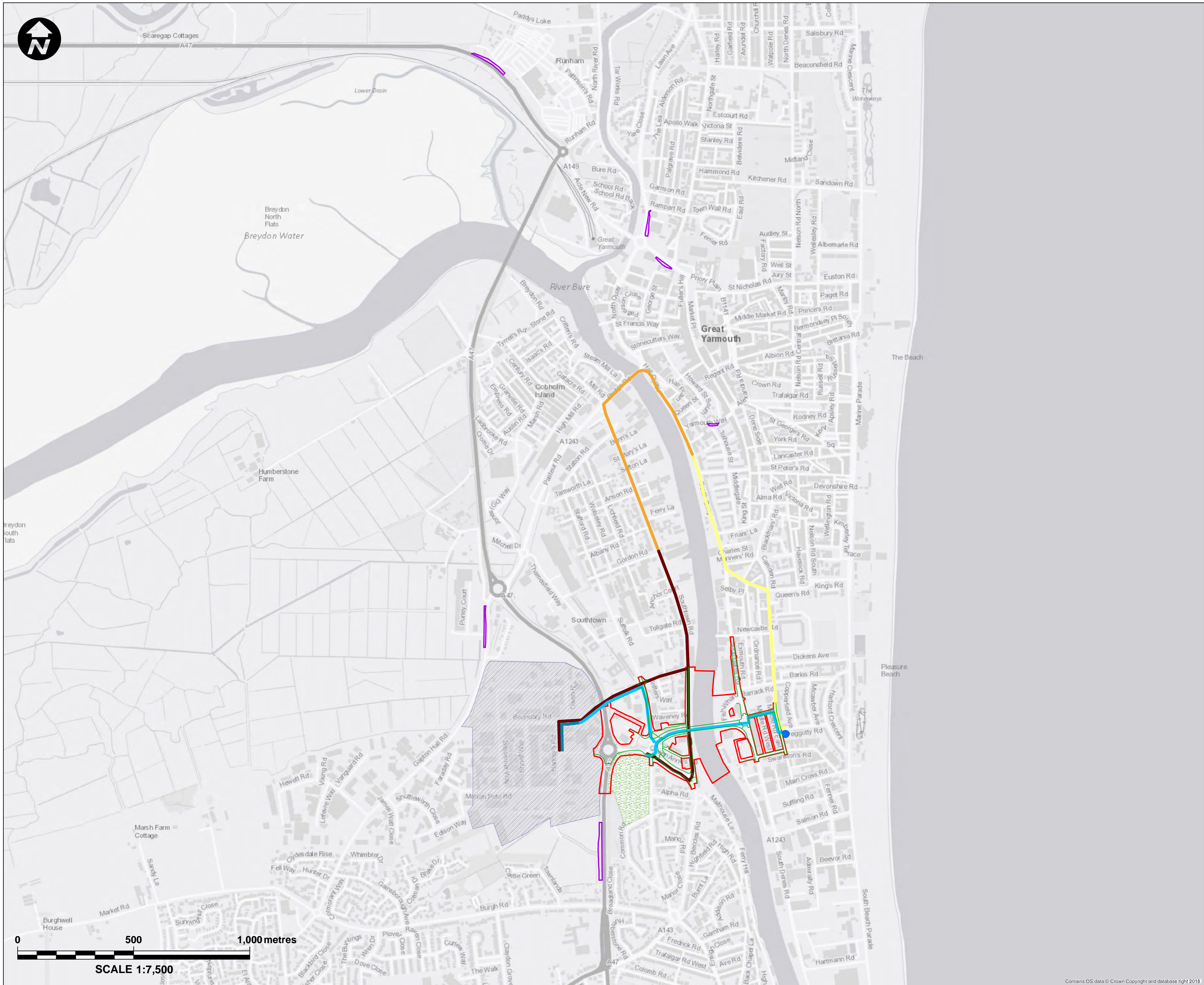
DRAWN	CHECKED	APPROVED	AUTHORISED
PM	IG-E	HH	MK

SCALE @ A1 SIZE	DATE	REVISION
1:12,500	29/03/2019	P00

DRAWING NUMBER

GYTRC-WSP-EGN-XX-DR-EN-2138

Contains OS data © Crown Copyright and database right 2018



Key:

- Principal Application Site
- Satellite Application Sites
- Peggotty Road Community Centre
- Harfreys Industrial Estate
- Southtown Common

Existing Cycle Routes

- 5 minutes cycle (0 - 1,333m)
- 10 minutes cycle (1,334 - 2,667m)
- 15 minutes cycle (2,668 - 4,000m)

Proposed Cycle Routes

- 5 minutes cycle (0 - 1,333m)
- 10 minutes cycle (1,334 - 2,667m)

Mapping reproduced by permission of Ordnance Survey on behalf of HMSO.
 © Crown copyright and database rights 2018 Ordnance Survey 100019340.

REVISION	DRAWN	CHECKED	APPROVED	DATE

Norfolk County Council
 Tom McCabe
 Executive Director of
 Community and Environmental Services
 Norfolk County Council
 County Hall, Martineau Lane
 Norwich NR1 2SG

PROJECT TITLE
**GREAT YARMOUTH
 THIRD RIVER CROSSING**

DRAWING TITLE
 FIGURE 17.8
 CHANGE IN CYCLING TIMES FROM
 PEGGOTTY ROAD COMMUNITY CENTRE
 TO HARFREYS INDUSTRIAL ESTATE
 AND SOUTHTOWN COMMON
 (REGULATION 5(2)(a))

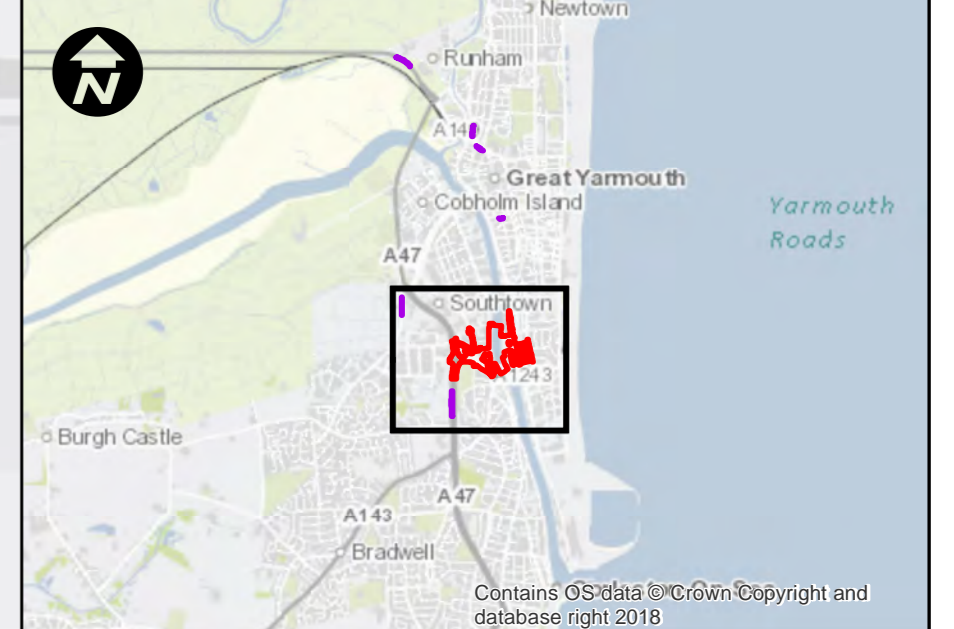
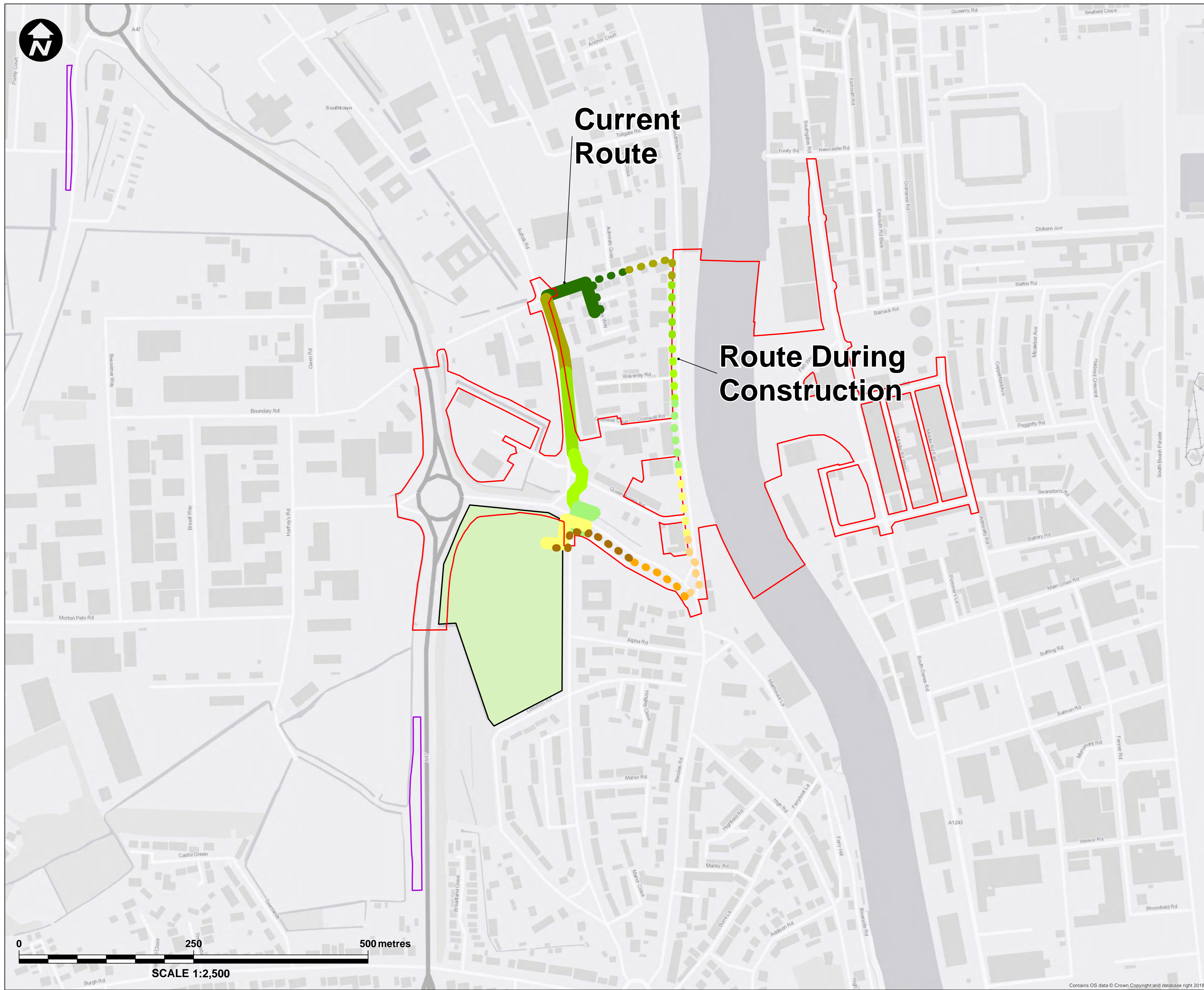
DRAWING STATUS
 FOR DCO APPLICATION

DRAWN	CHECKED	APPROVED	AUTHORISED
PM	IG-E	HH	MK

SCALE @ A1 SIZE	DATE	REVISION
1:7,500	29/03/2019	P00

DRAWING NUMBER
 GYTRC-WSP-EGN-XX-DR-EN-2139

Contains OS data © Crown Copyright and database right 2018



Key

- Principal Application Site
- Satellite Application Sites
- Southtown Common

Distance Travelled

- 100 metres
- 200 metres
- 300 metres
- 400 metres
- 500 metres
- 600 metres
- 700 metres
- 800 metres
- 900 metres

Mapping reproduced by permission of Ordnance Survey on behalf of HMSO.
© Crown copyright and database rights 2018 Ordnance Survey 100019340.

REVISION	DRAWN	CHECKED	APPROVED	DATE

Norfolk County Council
Tom McCabe
Executive Director of
Community and Environmental Services
Norfolk County Council
County Hall, Martineau Lane
Norwich NR1 2SG

PROJECT TITLE
**GREAT YARMOUTH
THIRD RIVER CROSSING**

DRAWING TITLE FIGURE 17.9
WALKING AND CYCLING ROUTES:
CURRENT
AND DURING CONSTRUCTION
(REGULATION 5(2)(a))

DRAWING STATUS
FOR DCO APPLICATION

DRAWN	CHECKED	APPROVED	AUTHORISED
PM	IG-E	HH	MK
SCALE @ A1 SIZE 1:2,500		DATE 13/03/2019	REVISION P00

DRAWING NUMBER
GYTRC-WSP-EGN-XX-DR-EN-2140

