

Great Yarmouth Third River Crossing Application for Development Consent Order

Document 6.4B: Water Bodies in a 'River Basin Management Plan' Plan

Planning Act 2008

**The Infrastructure Planning (Applications: Prescribed Forms and Procedure)
Regulations 2009 (as amended) ("APFP")**

APFP regulation Number: 5(2)(l)

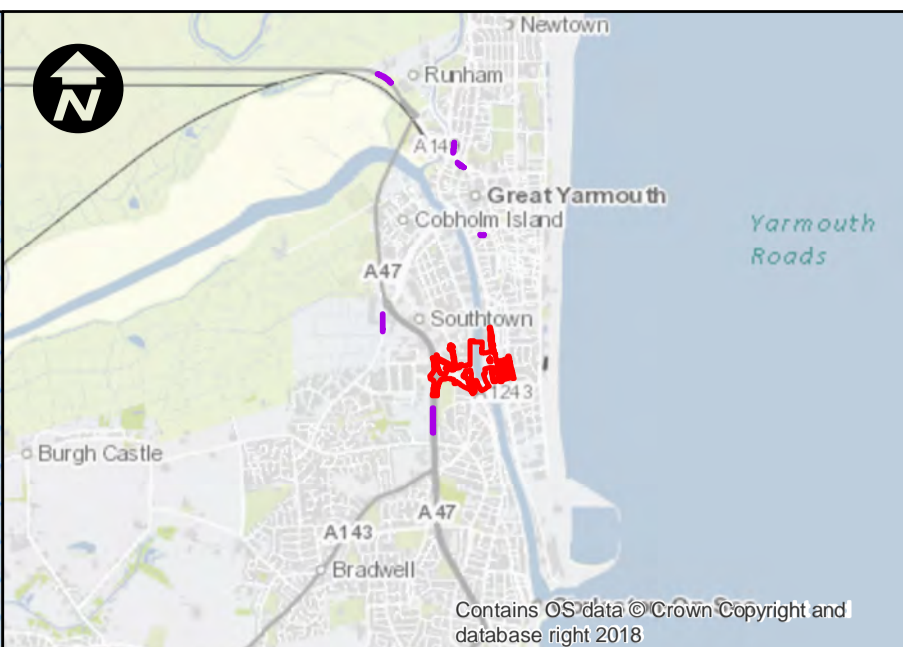
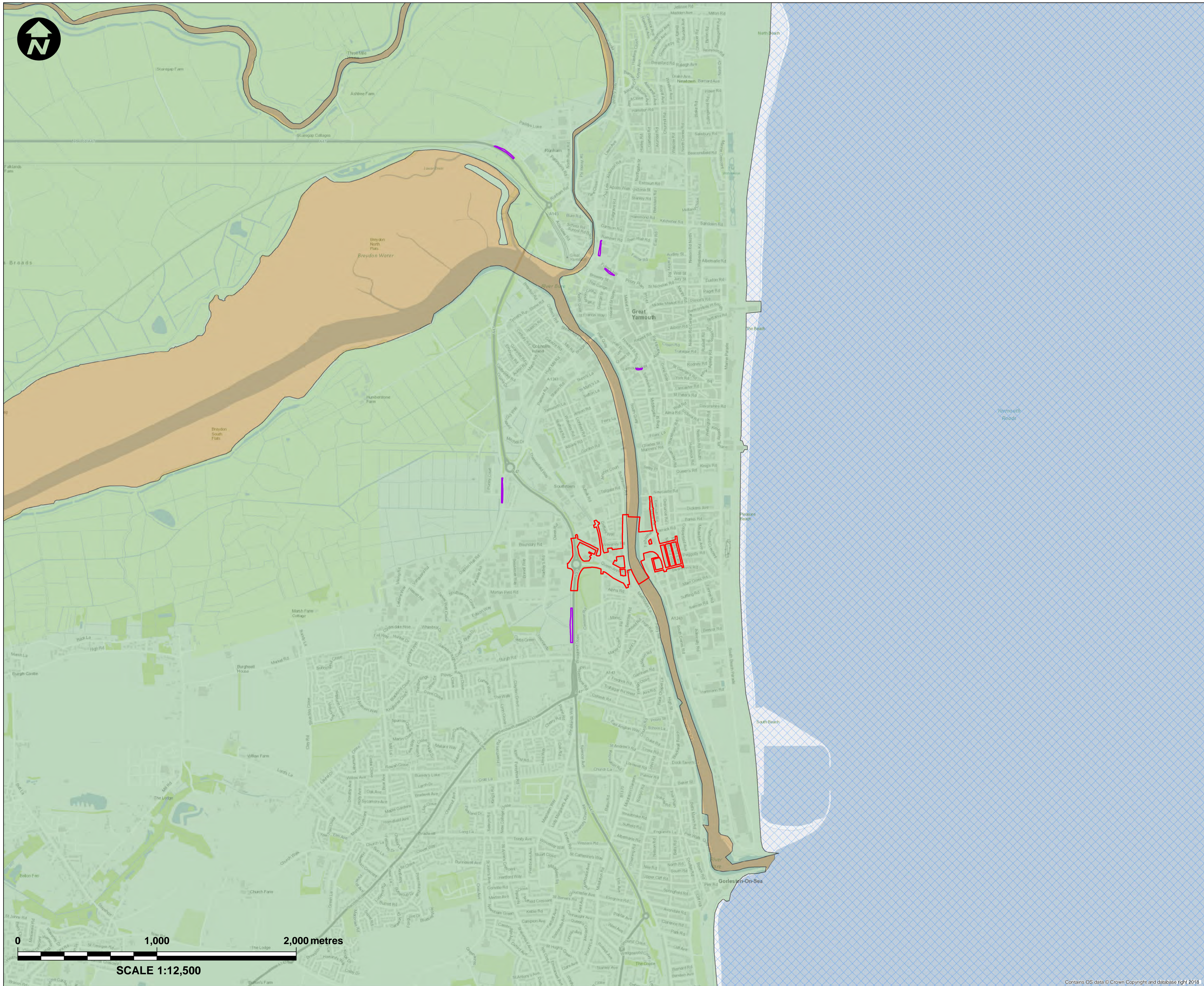
Planning Inspectorate Reference Number: TR010043

Author: Norfolk County Council

Document Reference: 6.4B – Water Bodies in a 'River Basin Management Plan' Plan

Version Number: 0 – Revision for Submission

Date: 30 April 2019



- Key:**
- Principal Application Site
 - Satellite Application Sites
- Anglian River Basin Management Plan Waterbodies**
- Broadland Rivers Chalk & Crag Ground Waterbody
 - Norfolk East Coastal Waterbody
 - Bure & Waveney & Yare & Lothing Transitional Waterbody

Mapping reproduced by permission of Ordnance Survey on behalf of HMSO.
 © Crown copyright and database rights 2018 Ordnance Survey 100019340.

REVISION	DRAWN	CHECKED	APPROVED	DATE

DESCRIPTION

Norfolk County Council
 Tom McCabe
 Executive Director of
 Community and Environmental Services
 Norfolk County Council
 County Hall, Martineau Lane
 Norwich NR1 2SG

PROJECT TITLE

GREAT YARMOUTH THIRD RIVER CROSSING

DRAWING TITLE

DCO DOCUMENT 6.4B
 WATER BODIES IN A 'RIVER BASIN
 MANAGEMENT PLAN' PLAN
 (REGULATION 5(2)(I))

DRAWING STATUS

FOR DCO APPLICATION

DRAWN	CHECKED	APPROVED	AUTHORISED
DE	CS	JW	MK

SCALE @ A1 SIZE	DATE	REVISION
1:12,500	18/04/2019	P00

DRAWING NUMBER

GYTRC-WSP-EWE-XX-DR-EN-2144

Contains OS data © Crown Copyright and database right 2018