

- LEGEND**
- King's Lynn District
 - Council Districts
 - Study Areas
 - Internal Drainage Board Drains
 - Internal Drainage Board Pumping Stations
 - Internal Drainage Board Structures
 - Middle Level Commissioners Internal Drainage Board
 - Downham Group Internal Drainage Board

This document has been prepared for the titled project or named part thereof and should not be relied upon or used for any other project without an independent check being carried out as to its suitability and prior written authority of Mott MacDonald being obtained. Mott MacDonald accepts no responsibility or liability for the consequences of this document being used for a purpose other than the purposes for which it was commissioned. Any person using or relying on the document for such other purpose agrees, and will by such use or reliance be taken to confirm his agreement, to indemnify Mott MacDonald for all loss or damage resulting therefrom. Mott MacDonald accepts no responsibility or liability for this document to any party other than the person by whom it was commissioned.

To the extent that this report is based on information supplied by other parties, Mott MacDonald accepts no liability for any loss or damage suffered by the client, whether contractual or tortious, stemming from any conclusions based on data supplied by parties other than Mott MacDonald and used by Mott MacDonald in preparing this map.

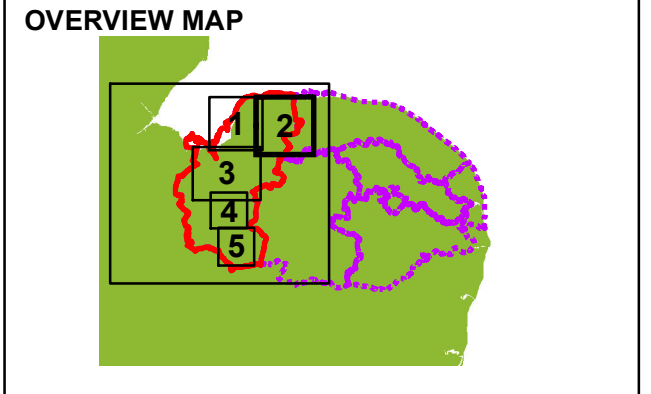
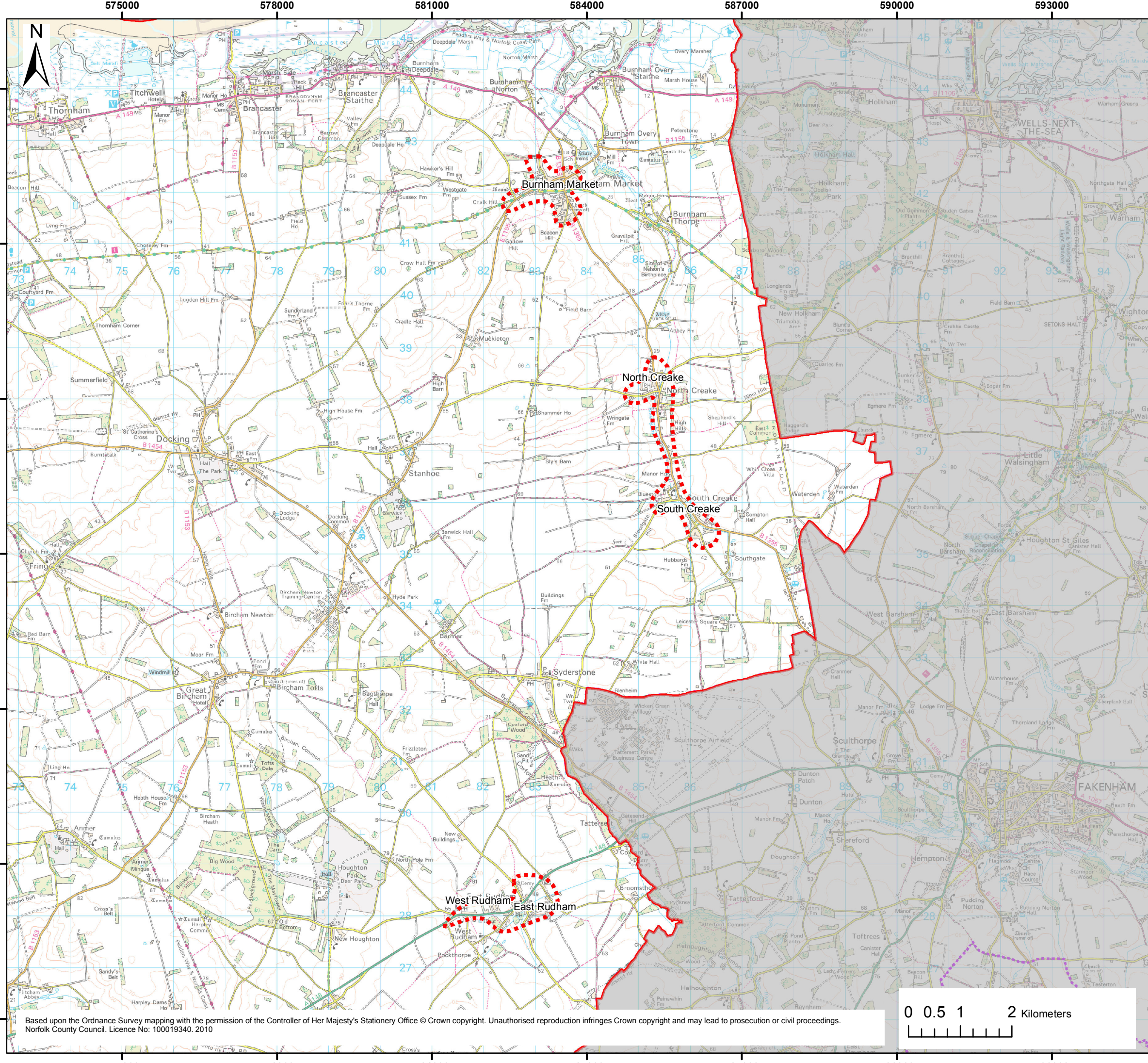
Based upon the Ordnance Survey mapping with the permission of the Controller of Her Majesty's Stationery Office © Crown copyright. Unauthorised reproduction infringes Crown copyright and may lead to prosecution or civil proceedings. Norfolk County Council. Licence No: 100019340. 2010



KING'S LYNN SURFACE WATER MANAGEMENT PLAN
PREPARATION STAGE

INTERNAL DRAINAGE BOARD BOUNDARIES - GROUP 1

ISSUE DRAFT	PREPARED BY NJC	CHECKED BY JC	APPROVED BY RJG
DATE 19/11/2010	PURPOSE OF MAP FOR INFORMATION		
DIGITAL FILENAME AND PATH P:\Cambridge\Demeter - Daedalus\EVT\Projects\271567DA02_Kings_Lynn_SWMP			
MAP REFERENCE (PROJECT NR./FIGURE NR./REVISION) 271567DA02/005/1		SCALE 1:66,000	ORIGINAL A3



LEGEND

- King's Lynn District
- Council Districts
- Study Areas
- Internal Drainage Board Drains
- Internal Drainage Board Pumping Stations
- Internal Drainage Board Structures
- Middle Level Commissioners Internal Drainage Board
- Downham Group Internal Drainage Board

This document has been prepared for the titled project or named part thereof and should not be relied upon or used for any other project without an independent check being carried out as to its suitability and prior written authority of Mott MacDonald being obtained. Mott MacDonald accepts no responsibility or liability for the consequences of this document being used for a purpose other than the purposes for which it was commissioned. Any person using or relying on the document for such other purpose agrees, and will by such use or reliance be taken to confirm his agreement, to indemnify Mott MacDonald for all loss or damage resulting therefrom. Mott MacDonald accepts no responsibility or liability for this document to any party other than the person by whom it was commissioned.

To the extent that this report is based on information supplied by other parties, Mott MacDonald accepts no liability for any loss or damage suffered by the client, whether contractual or tortious, stemming from any conclusions based on data supplied by parties other than Mott MacDonald and used by Mott MacDonald in preparing this map.

Based upon the Ordnance Survey mapping with the permission of the Controller of Her Majesty's Stationery Office © Crown copyright. Unauthorised reproduction infringes Crown copyright and may lead to prosecution or civil proceedings. Norfolk County Council. Licence No: 100019340. 2010



Mott MacDonald

Environment
Division
Demeter House
Station Road
Cambridge

for



Norfolk County Council

County Hall
Martineau Lane
Norwich
Norfolk

Partner Organisations



anglianwater



Environment Agency



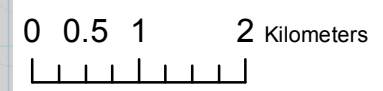
Borough Council of
**King's Lynn &
West Norfolk**

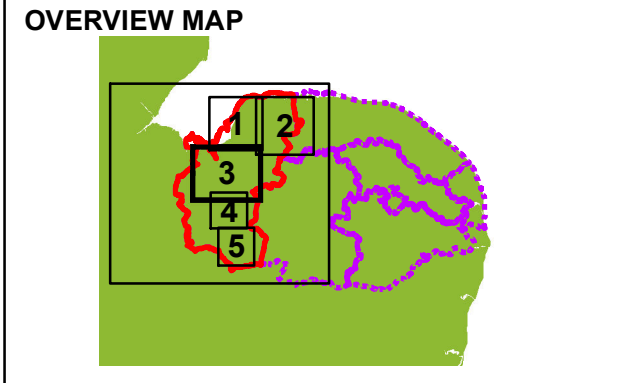
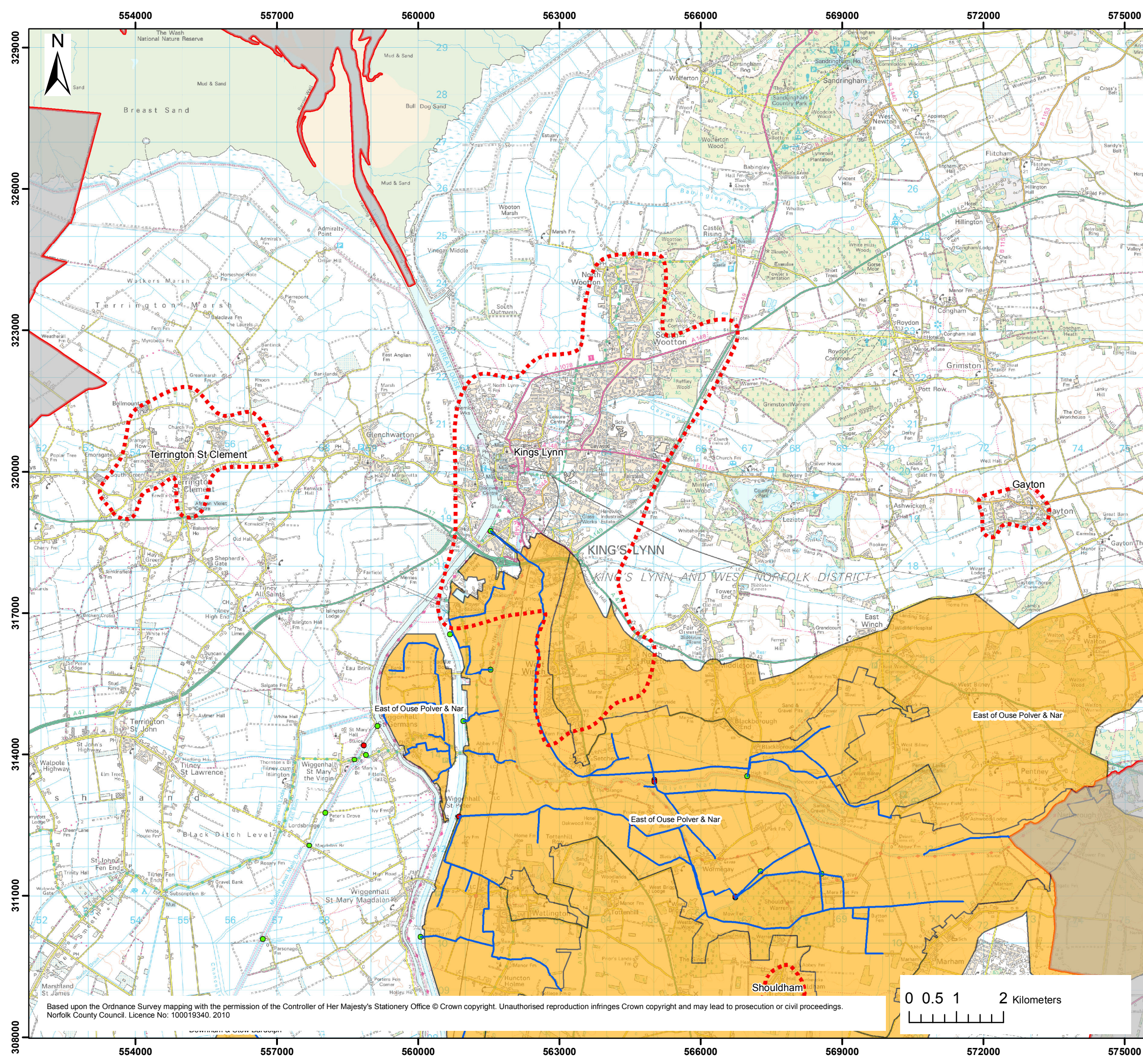
**KING'S LYNN SURFACE WATER
MANAGEMENT PLAN
PREPARATION STAGE**

INTERNAL DRAINAGE BOARD BOUNDARIES - GROUP 2

ISSUE DRAFT	PREPARED BY NJC	CHECKED BY JC	APPROVED BY RJG
DATE 19/11/2010	PURPOSE OF MAP FOR INFORMATION		
DIGITAL FILENAME AND PATH P:\Cambridge\Demeter - Daedalus\EVT\Projects\271567DA02_Kings_Lynn_SWMP			
MAP REFERENCE (PROJECT NR./FIGURE NR./REVISION) 271567DA02/005/2		SCALE 1:71,000	ORIGINAL A3

Based upon the Ordnance Survey mapping with the permission of the Controller of Her Majesty's Stationery Office © Crown copyright. Unauthorised reproduction infringes Crown copyright and may lead to prosecution or civil proceedings. Norfolk County Council. Licence No: 100019340. 2010





- LEGEND**
- Kings Lynn District
 - Council Districts
 - Study Areas
 - Internal Drainage Board Drains
 - Internal Drainage Board Pumping Stations
 - Internal Drainage Board Structures
 - Middle Level Commissioners Internal Drainage Board
 - Downham Group Internal Drainage Board

This document has been prepared for the titled project or named part thereof and should not be relied upon or used for any other project without an independent check being carried out as to its suitability and prior written authority of Mott MacDonald being obtained. Mott MacDonald accepts no responsibility or liability for the consequences of this document being used for a purpose other than the purposes for which it was commissioned. Any person using or relying on the document for such other purpose agrees, and will by such use or reliance be taken to confirm his agreement, to indemnify Mott MacDonald for all loss or damage resulting therefrom. Mott MacDonald accepts no responsibility or liability for this document to any party other than the person by whom it was commissioned.

To the extent that this report is based on information supplied by other parties, Mott MacDonald accepts no liability for any loss or damage suffered by the client, whether contractual or tortious, stemming from any conclusions based on data supplied by parties other than Mott MacDonald and used by Mott MacDonald in preparing this map.

Based upon the Ordnance Survey mapping with the permission of the Controller of Her Majesty's Stationery Office © Crown copyright. Unauthorised reproduction infringes Crown copyright and may lead to prosecution or civil proceedings. Norfolk County Council. Licence No: 100019340. 2010



KING'S LYNN SURFACE WATER MANAGEMENT PLAN PREPARATION STAGE

INTERNAL DRAINAGE BOARD BOUNDARIES - GROUP 3

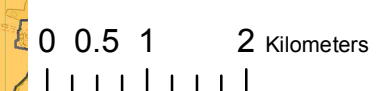
ISSUE	PREPARED BY	CHECKED BY	APPROVED BY
DRAFT	NJC	JC	RJG

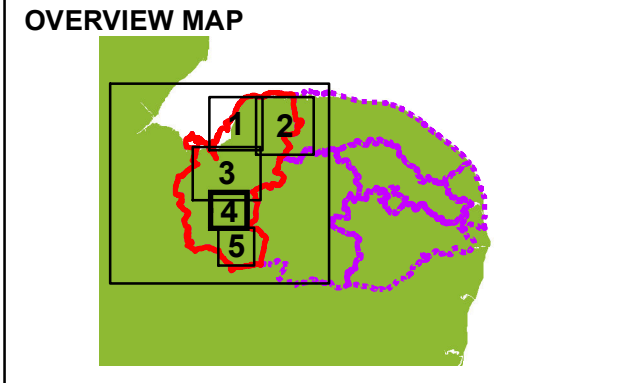
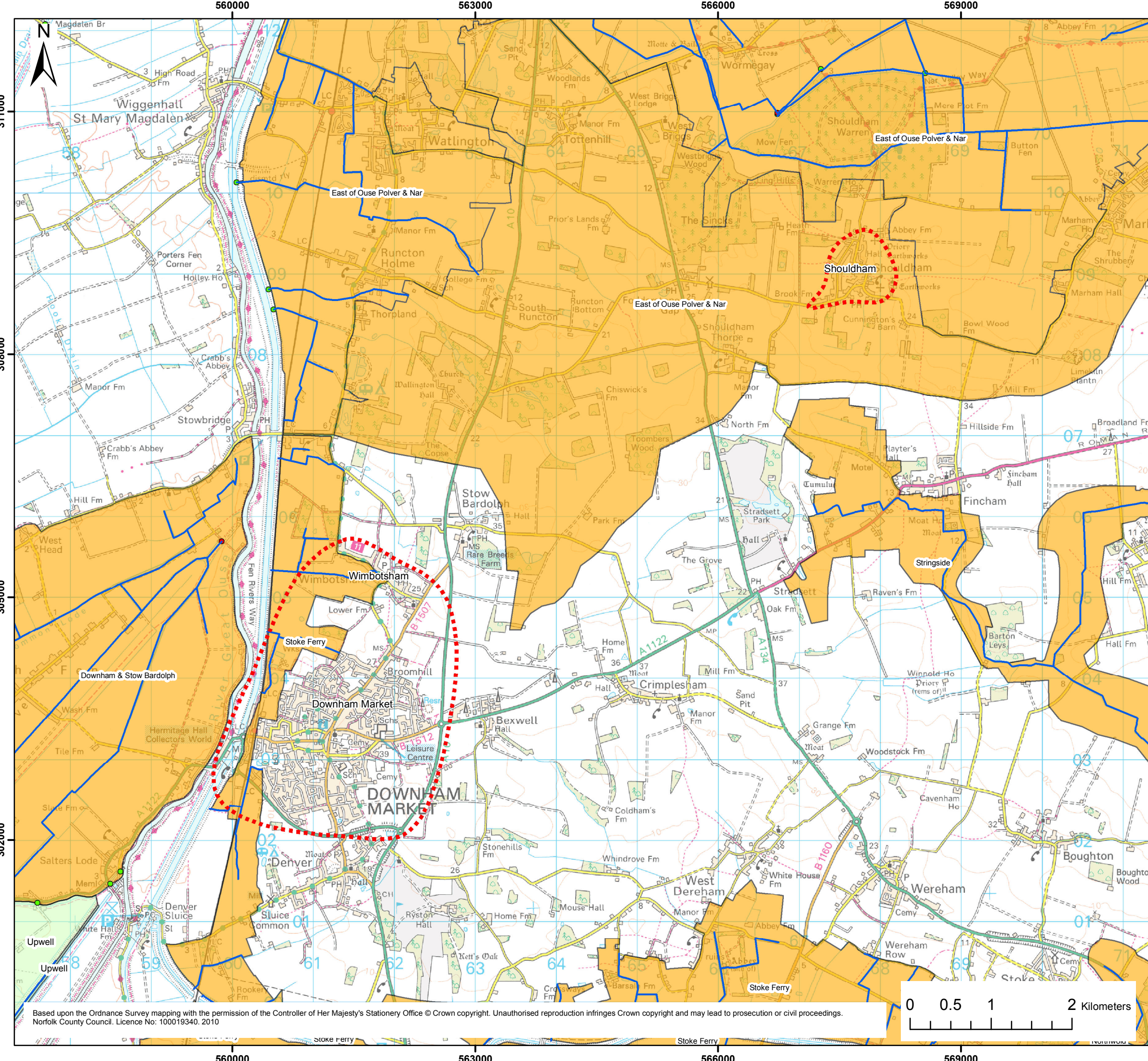
DATE	PURPOSE OF MAP
19/11/2010	FOR INFORMATION

DIGITAL FILENAME AND PATH
P:\Cambridge\Demeter - Daedalus\EVT\Projects\271567DA02_Kings_Lynn_SWMP

MAP REFERENCE (PROJECT NR./FIGURE NR./REVISION)	SCALE	ORIGINAL
271567DA02/005/3	1:76,000	A3

Based upon the Ordnance Survey mapping with the permission of the Controller of Her Majesty's Stationery Office © Crown copyright. Unauthorised reproduction infringes Crown copyright and may lead to prosecution or civil proceedings. Norfolk County Council. Licence No: 100019340. 2010





- LEGEND**
- King's Lynn District
 - Council Districts
 - Study Areas
 - Internal Drainage Board Drains
 - Internal Drainage Board Pumping Stations
 - Internal Drainage Board Structures
 - Middle Level Commissioners Internal Drainage Board
 - Downham Group Internal Drainage Board

This document has been prepared for the titled project or named part thereof and should not be relied upon or used for any other project without an independent check being carried out as to its suitability and prior written authority of Mott MacDonald being obtained. Mott MacDonald accepts no responsibility or liability for the consequences of this document being used for a purpose other than the purposes for which it was commissioned. Any person using or relying on the document for such other purpose agrees, and will by such use or reliance be taken to confirm his agreement, to indemnify Mott MacDonald for all loss or damage resulting therefrom. Mott MacDonald accepts no responsibility or liability for this document to any party other than the person by whom it was commissioned.

To the extent that this report is based on information supplied by other parties, Mott MacDonald accepts no liability for any loss or damage suffered by the client, whether contractual or tortious, stemming from any conclusions based on data supplied by parties other than Mott MacDonald and used by Mott MacDonald in preparing this map.

Based upon the Ordnance Survey mapping with the permission of the Controller of Her Majesty's Stationery Office © Crown copyright. Unauthorised reproduction infringes Crown copyright and may lead to prosecution or civil proceedings. Norfolk County Council. Licence No: 100019340. 2010



KING'S LYNN SURFACE WATER MANAGEMENT PLAN PREPARATION STAGE

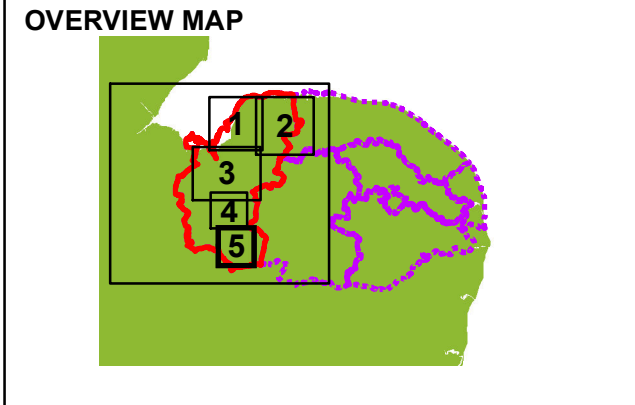
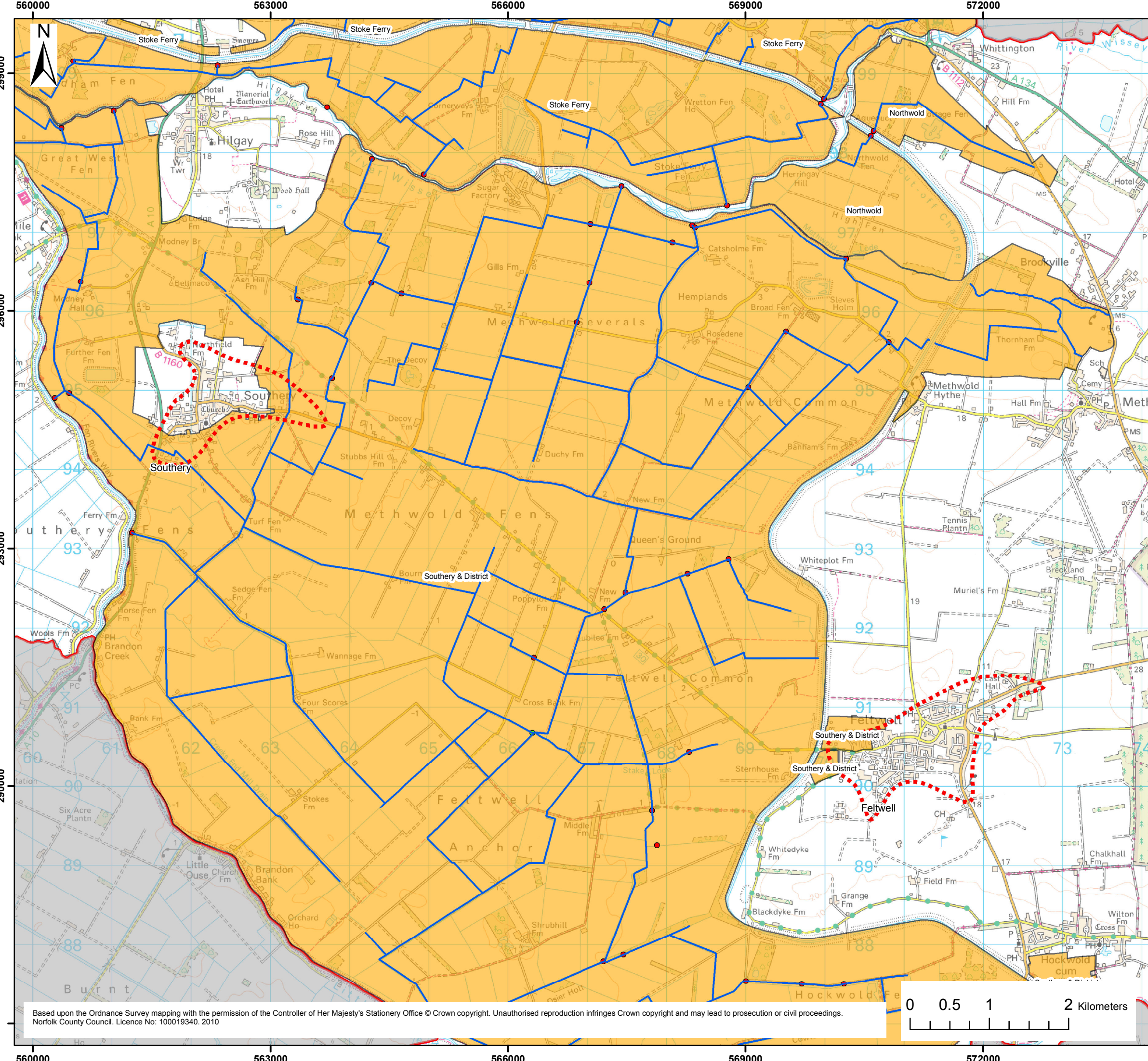
INTERNAL DRAINAGE BOARD BOUNDARIES - GROUP 4

ISSUE DRAFT	PREPARED BY NJC	CHECKED BY JC	APPROVED BY RJG
----------------	--------------------	------------------	--------------------

DATE 19/11/2010	PURPOSE OF MAP FOR INFORMATION
--------------------	-----------------------------------

DIGITAL FILENAME AND PATH P:\Cambridge\Demeter - Daedalus\EVT\Projects\271567DA02_Kings_Lynn_SWMP		
MAP REFERENCE (PROJECT NR./FIGURE NR./REVISION) 271567DA02/005/4	SCALE 1:45,000	ORIGINAL A3

Based upon the Ordnance Survey mapping with the permission of the Controller of Her Majesty's Stationery Office © Crown copyright. Unauthorised reproduction infringes Crown copyright and may lead to prosecution or civil proceedings. Norfolk County Council. Licence No: 100019340. 2010



LEGEND

- King's Lynn District
- Council Districts
- Study Areas
- Internal Drainage Board Drains
- Internal Drainage Board Pumping Stations
- Internal Drainage Board Structures
- Middle Level Commissioners Internal Drainage Board
- Downham Group Internal Drainage Board

This document has been prepared for the titled project or named part thereof and should not be relied upon or used for any other project without an independent check being carried out as to its suitability and prior written authority of Mott MacDonald being obtained. Mott MacDonald accepts no responsibility or liability for the consequences of this document being used for a purpose other than the purposes for which it was commissioned. Any person using or relying on the document for such other purpose agrees, and will by such use or reliance be taken to confirm his agreement, to indemnify Mott MacDonald for all loss or damage resulting therefrom. Mott MacDonald accepts no responsibility or liability for this document to any party other than the person by whom it was commissioned.

To the extent that this report is based on information supplied by other parties, Mott MacDonald accepts no liability for any loss or damage suffered by the client, whether contractual or tortious, stemming from any conclusions based on data supplied by parties other than Mott MacDonald and used by Mott MacDonald in preparing this map.

Based upon the Ordnance Survey mapping with the permission of the Controller of Her Majesty's Stationery Office © Crown copyright. Unauthorised reproduction infringes Crown copyright and may lead to prosecution or civil proceedings. Norfolk County Council. Licence No: 100019340. 2010



Mott MacDonald

Environment
Division
Demeter House
Station Road
Cambridge


for




Norfolk County Council

County Hall
Martineau Lane
Norwich
Norfolk


Partner Organisations



anglianwater



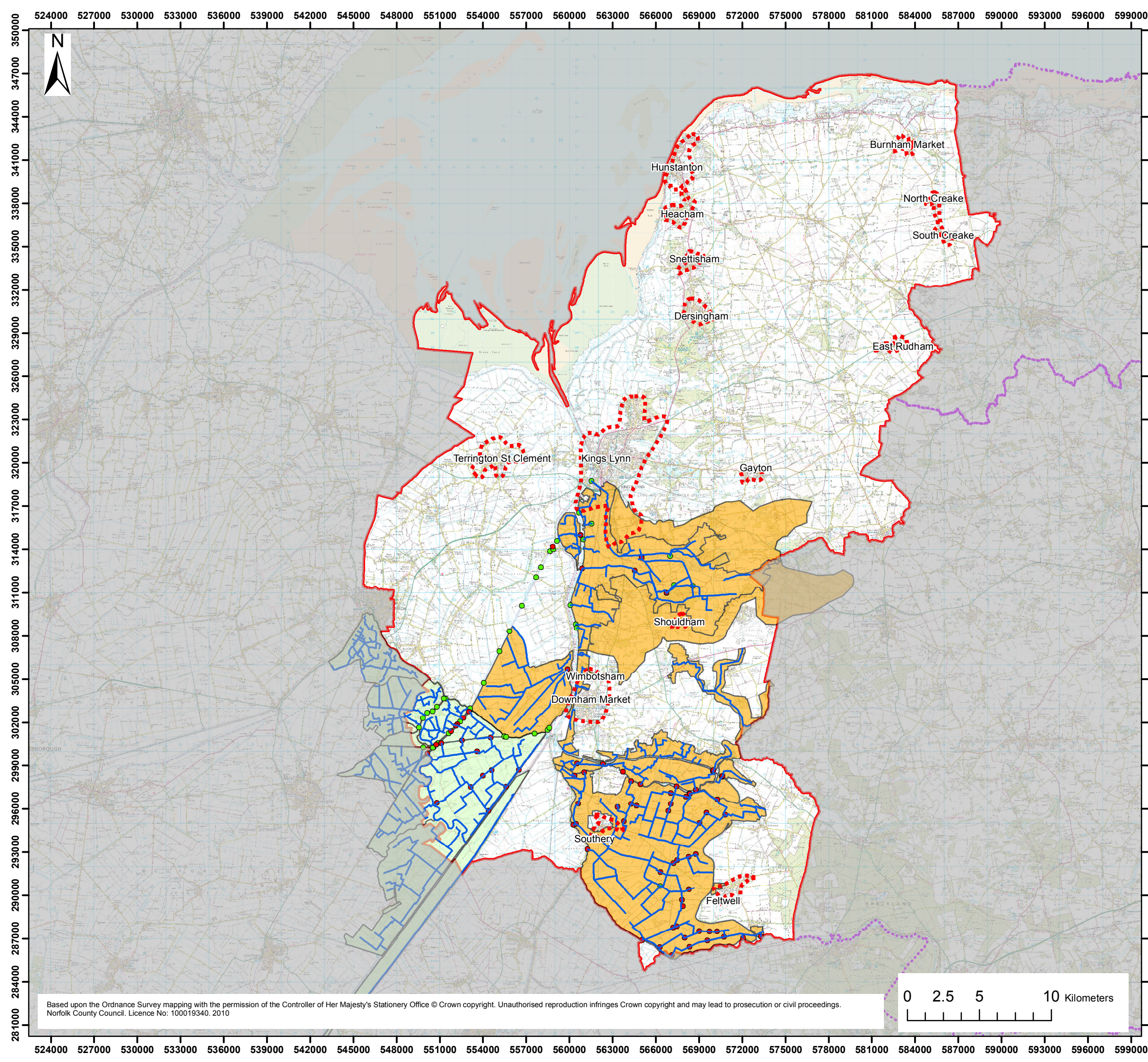
Environment Agency



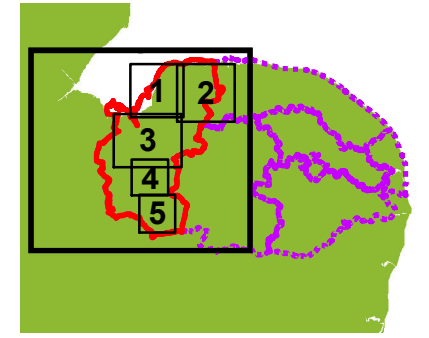
Borough Council of
**King's Lynn &
West Norfolk**

KING'S LYNN SURFACE WATER MANAGEMENT PLAN			
PREPARATION STAGE			
INTERNAL DRAINAGE BOARD BOUNDARIES - GROUP 5			
ISSUE DRAFT	PREPARED BY NJC	CHECKED BY JC	APPROVED BY RJG
DATE 19/11/2010	PURPOSE OF MAP FOR INFORMATION		
DIGITAL FILENAME AND PATH P:\Cambridge\Demeter - Daedalus\EVT\Projects\271567DA02_Kings_Lynn_SWMP			
MAP REFERENCE (PROJECT NR./FIGURE NR./REVISION) 271567DA02/005/5		SCALE 1:46,000	ORIGINAL A3

Based upon the Ordnance Survey mapping with the permission of the Controller of Her Majesty's Stationery Office © Crown copyright. Unauthorised reproduction infringes Crown copyright and may lead to prosecution or civil proceedings. Norfolk County Council. Licence No: 100019340. 2010



OVERVIEW MAP



LEGEND

- King's Lynn District
- Council Districts
- Study Areas
- Internal Drainage Board Drains
- Internal Drainage Board Pumping Stations
- Internal Drainage Board Structures
- Middle Level Commissioners Internal Drainage Board
- Downham Group Internal Drainage Board

This document has been prepared for the titled project or named part thereof and should not be relied upon or used for any other project without an independent check being carried out as to its suitability and prior written authority of Mott MacDonald being obtained. Mott MacDonald accepts no responsibility or liability for the consequences of this document being used for a purpose other than the purposes for which it was commissioned. Any person using or relying on the document for such other purpose agrees, and will by such use or reliance be taken to confirm his agreement, to indemnify Mott MacDonald for all loss or damage resulting therefrom. Mott MacDonald accepts no responsibility or liability for this document to any party other than the person by whom it was commissioned.

To the extent that this report is based on information supplied by other parties, Mott MacDonald accepts no liability for any loss or damage suffered by the client, whether contractual or tortious, stemming from any conclusions based on data supplied by parties other than Mott MacDonald and used by Mott MacDonald in preparing this map.

Based upon the Ordnance Survey mapping with the permission of the Controller of Her Majesty's Stationery Office © Crown copyright. Unauthorised reproduction infringes Crown copyright and may lead to prosecution or civil proceedings. Norfolk County Council. Licence No: 100019340. 2010



Environment Division
 Demeter House
 Station Road
 Cambridge


 Norfolk County Council

County Hall
 Martineau Lane
 Norwich
 Norfolk

Partner Organisations



Borough Council of
**King's Lynn &
 West Norfolk**



**KING'S LYNN SURFACE WATER
MANAGEMENT PLAN
PREPARATION STAGE**

INTERNAL DRAINAGE BOARD BOUNDARIES - OVERVIEW

ISSUE DRAFT	PREPARED BY NJC	CHECKED BY JC	APPROVED BY RJG
----------------	--------------------	------------------	--------------------

DATE 19/11/2010	PURPOSE OF MAP FOR INFORMATION
--------------------	-----------------------------------

DIGITAL FILENAME AND PATH
P:\Cambridge\Demeter - Daedalus\EVT\Projects\271567DA02_Kings_Lynn_SWMP

MAP REFERENCE (PROJECT NR./FIGURE NR./REVISION) 271567DA02/005/O	SCALE 1:248,000	ORIGINAL A3
---	--------------------	----------------

Based upon the Ordnance Survey mapping with the permission of the Controller of Her Majesty's Stationery Office © Crown copyright. Unauthorised reproduction infringes Crown copyright and may lead to prosecution or civil proceedings. Norfolk County Council. Licence No: 100019340. 2010

