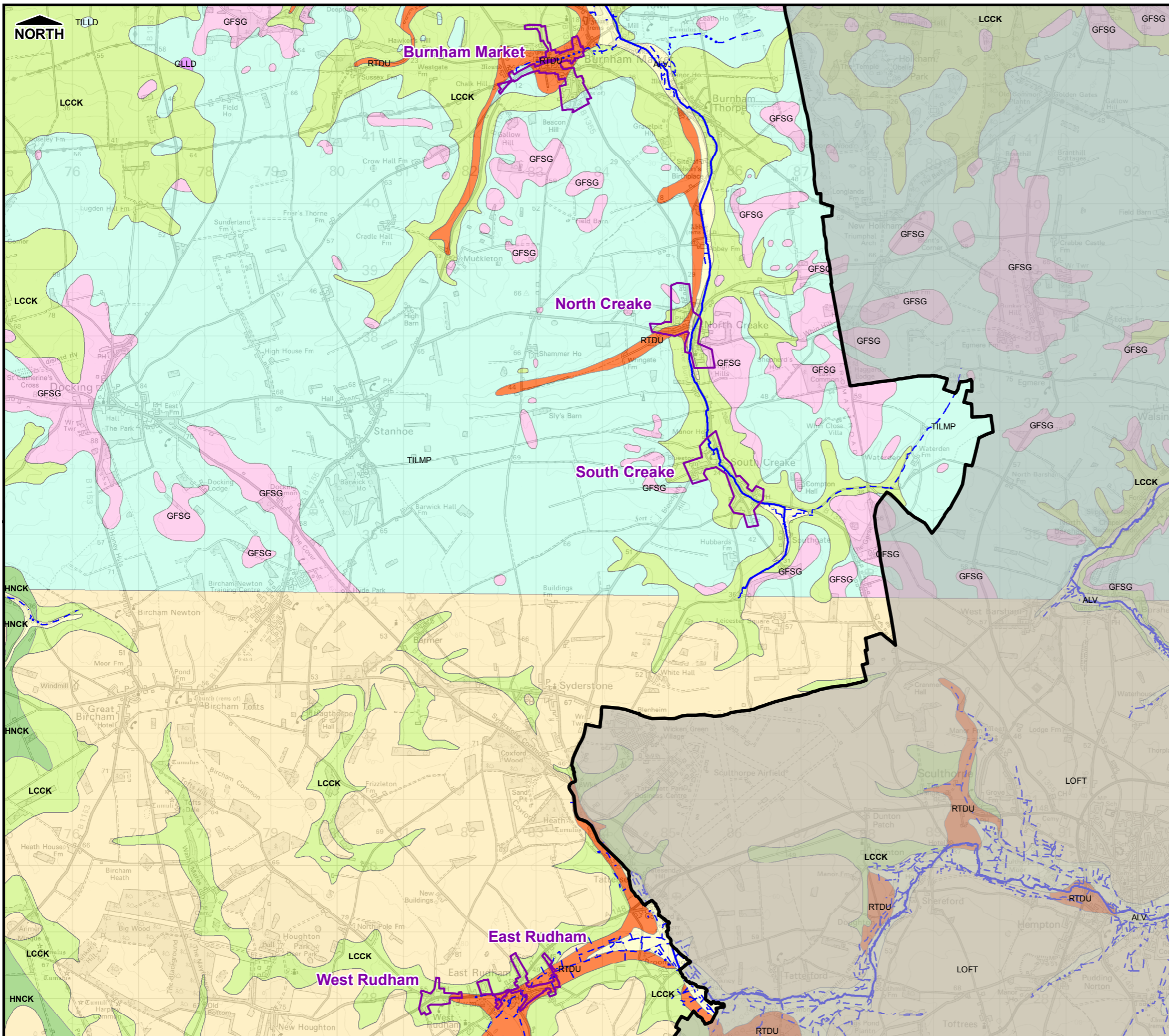


THIS DRAWING MAY BE USED ONLY FOR THE PURPOSE INTENDED



- Legend**
- Administrative Boundary
 - Main River
 - Ordinary Watercourse
 - Assessed Settlements
 - Culverted Watercourse
- Geology (Superficial):**
- Alluvium (ALV)
 - River Terrace Deposits (RTDU)
 - Bank Deposits (BANK)
 - River Terrace Deposits (RTD)
 - Blown Sand (BSA)
 - Shell Bank (SHEL)
 - Glaciofluvial Deposits (GFSDUD)
 - Shell Marl (SLM)
 - Glaciofluvial Sand & Gravel (GFSG)
 - Storm Beach Deposits (STOB)
 - Glaciolacustrine Deposits (GLLD)
 - Tabular Or Sheet Deposits (TOSD)
 - Head (HEAD)
 - Tidal Flat Deposits (TFD)
 - Lowestoft Formation (LOFT)
 - Till, Devensian (TILLD)
 - Nar Valley Formation (NARC)
 - Till, Mid Pleistocene (TILMP)
 - Peat (PEAT)
 - Tottenhill Gravel Member (TOTL)
 - Raised Beach Deposits (RBDU)
- Geology (Bedrock):**
- Carstone Formation (CA)
 - Mintlyn Sand Member (MNB)
 - Dersingham Formation (DEB)
 - Roach Formation (ROH)
 - Gault Formation (GLT)
 - Roxham Member & Runcton Member (RURO)
 - Holywell Nodular Chalk
 - Formation & New Pit Chalk Formation (HNCK)
 - Roxham Sand Member (RXB)
 - Hunstanton Formation (HUCK)
 - Sandringham Sand Formation (SAS)
 - Kimmeridge Clay Formation (KC)
 - Snettisham Clay Member (SNC)
 - Lewes Nodular Chalk Formation, Seaford Chalk Formation, Newhaven Chalk Formation & Culver Chalk Formation (LCCK)
 - Tottenhoe Stone Member (TTST)
 - West Melbury Marly Chalk Formation & Zig Zag Chalk Formation (WZCK)
 - Leziate Sand Member (LZB)
 - Woburn Sands Formation (WBS)
 - Melbourn Rock Member (MR)

Notes

Borough Council of King's Lynn & West Norfolk

Borough Council of
King's Lynn & West Norfolk

Surface Water Management Plan

© Crown Copyright. All rights reserved King's Lynn & West Norfolk Borough Council. Licence No.100031673 (2011). Covers all data that has been supplied and distributed under license for the King's Lynn SWMP project. Digital geological data reproduced from British Geological Survey © NERC Licence No 2011/032A.

Scale at A3	Date	Drawn by	Approved by
1:60,000	19/12/2011	S.TURNBULL	P.HLINOVSKY

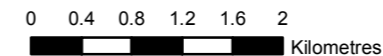
Geological Map

Consultant

CAPITA SYMONDS
Flood Risk Management

Capita Symonds
Level Seven,
52 Grosvenor Gardens,
Belgravia,
London
SW1W 0AU

FIGURE 3.2



Filepath: F:\Environment\ZMET\CS048386_KingsLynnSWMP\GIS\ARC\MapDocs\SWMP_Fig3.2_Geology.mxd