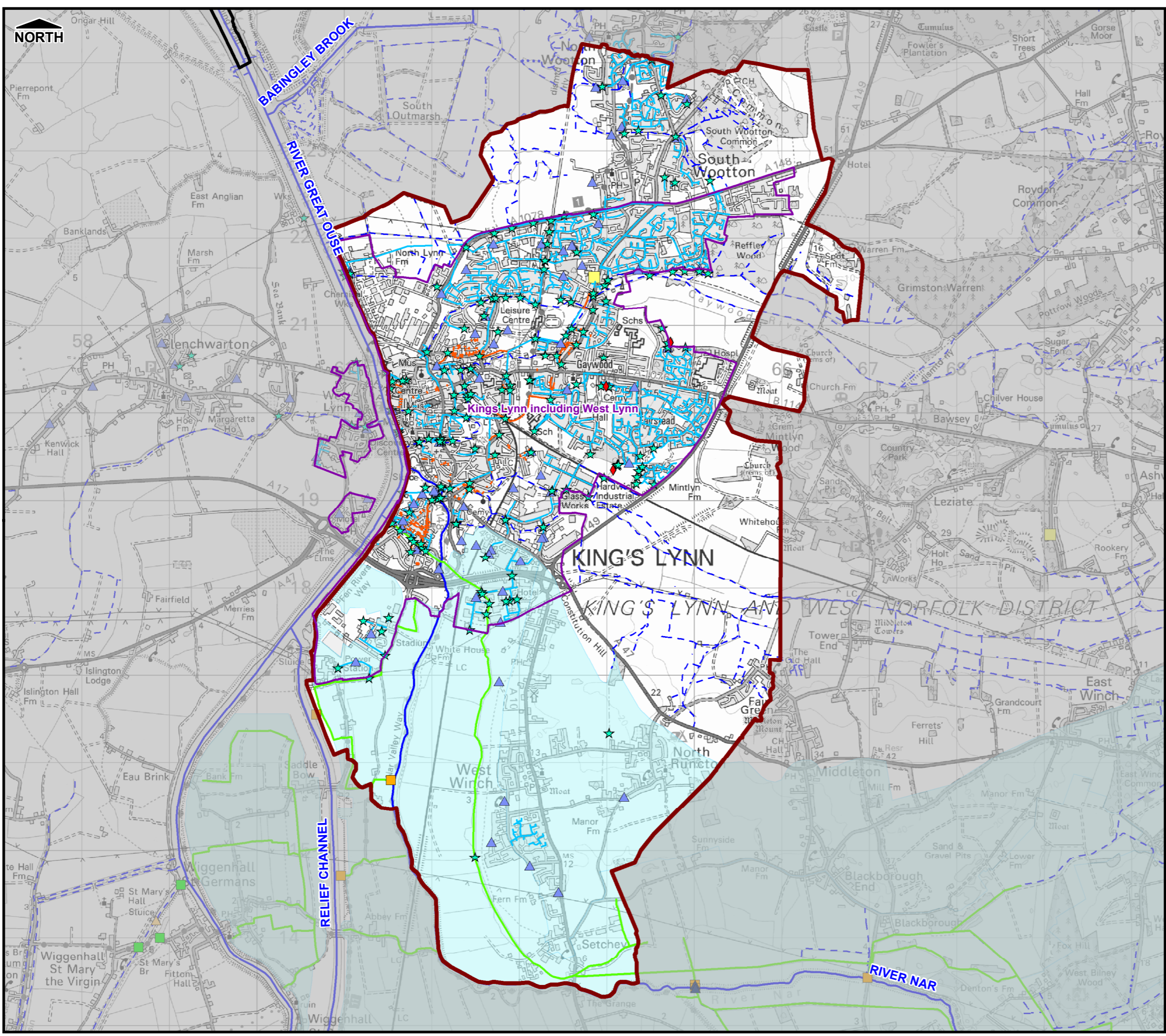


THIS DRAWING MAY BE USED ONLY FOR THE PURPOSE INTENDED



**Legend**

- Hydraulic Model Boundary
  - Administrative Boundary
  - Main River
  - Ordinary Watercourse
  - ◆ Sewer Storage
  - ★ Sewer Discharge
  - Sewer Flooding Recorded
  - ▲ Pumping Stations
  - Surface Water Sewer
  - Combined Sewer
  - Culverted Watercourse
  - ▲ Pumping Stations
  - Surface Water Sewer
  - Combined Sewer
- Middle Level Commissioners Internal Drainage Board
- ▲ Pumping Stations
  - Assets
  - IDB drains
  - IDB boundaries
- Downham Group Internal Drainage Board
- ▲ Pumping Stations
  - Assets
  - IDB drains
  - IDB boundaries

**Notes**

1. Foul drainage network not displayed;
2. Drainage networks with a diameter less than 150mm not displayed.
3. The pipe network shown on this drawing is as supplied by Anglian Water. Any queries relating to connectivity should go directly to Anglian Water.
4. Sewer flood records relate to internal and external flooding of properties. Data supplied by Environment Agency.

**Borough Council of King's Lynn & West Norfolk**



**Surface Water Management Plan**

© Crown Copyright. All rights reserved King's Lynn & West Norfolk Borough Council. Licence No.100031673 (2011). Covers all data that has been supplied and distributed under license for the King's Lynn SWMP project.

<b>Scale at A3</b>	<b>Date</b>	<b>Drawn by</b>	<b>Approved by</b>
1:45,000	23/09/2011	S.TURNBULL	P.PLINOVSKY

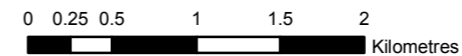
**Sewer Network with Sewer Flooding Incidents  
King's Lynn Model Area**

Consultant

**CAPITA SYMONDS**  
Flood Risk Management

Capita Symonds  
Level Seven,  
52 Grosvenor Gardens,  
Belgravia,  
London  
SW1W 0AU

**FIGURE 7.8**



Filepath: F:\Environment\ZMET\CS048386\_KingsLynnSWMP\GIS\ARC\Map\KLN\_SWMNework.mxd