

Norfolk Coast Path

Wells Quayside



Route summary

A 1 mile stretch of Coast Path along the Quay side of the harbour town of Wells-Next-The-Sea. An accessible route with stunning coastal views.

Route Description

This walk has been audited to support people accessing the countryside and improve quality of life. The walk audit checked for potential accessibility difficulties along the route. Maps are provided on p6-7 showing point numbers which correspond to photos and descriptions of these areas so that you can decide if this walk is suitable for you.

The route is a 1 mile stretch of the Norfolk Coast Path along the sea wall, overlooking Wells Salt Marshes and Harbour. Access to the seawall from the carpark is via a switch back ramp with a gradient of 1:11 and the ramp from the town end is less than 1:12.

The surface is a smooth tarmac footway between 2m and 3m wide. There is frequent seating provision with good views out over the coast. Toilet facilities and refreshments can be found at either end of the walk.

Route Overview



Start point: Wells Car Park, Beach Road
Grid Ref: TF 913 454



Distance: 1 mile each way



Accessible facilities: Located in the car park and more in the town centre



By car: Wells Car Park
Grid Ref: TF 913 454



By bus: The Buttlands bus stop, Station Road, Wells-Next-The-Sea. travelineeastanglia.co.uk



Points of Interest

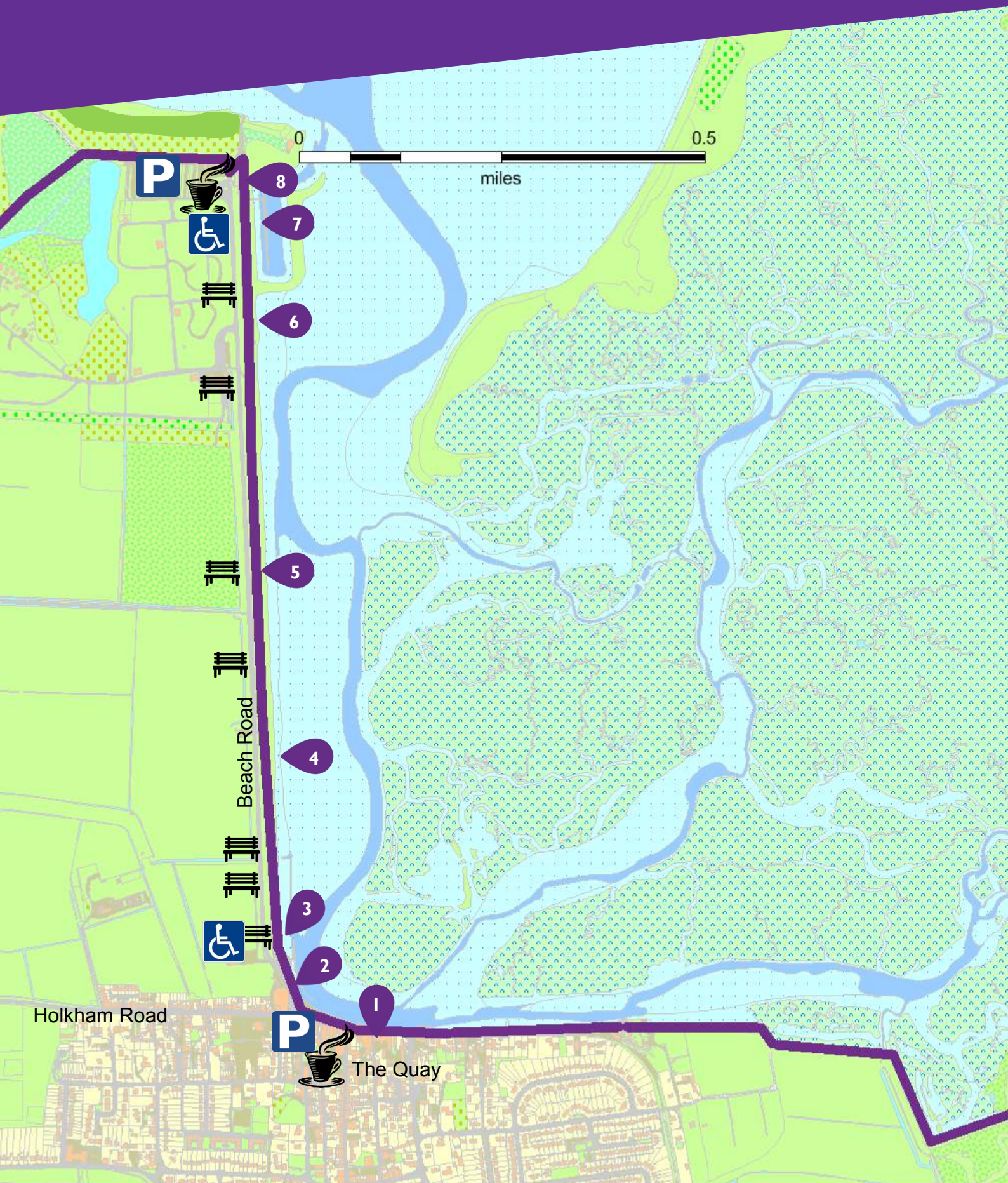


Wells Harbour



Wells Beach Cafe

Wells Quay



Detail of Car Park



Accessibility Information

1

A photograph of Wells-Next-The-Sea Harbour. In the foreground, several cars are parked on a paved area. In the background, a large wooden sailing ship is docked at a pier. The harbour water is calm, and other smaller boats are visible in the distance under a clear blue sky.

Start at Wells-Next-The-Sea Harbour. There are car parking facilities, accessible toilets and Cafés to be found nearby

2

A photograph showing a view over the harbour from a pier. A white boat with a red stripe is docked in the foreground. The water is blue, and a small island with a lighthouse is visible in the distance. The sky is blue with some light clouds.


View out over the Harbour

3

A photograph of a paved path leading up a gentle slope. The path is made of dark grey tarmac with some lighter patches. To the left, there is a stone wall. The path leads towards a grassy area in the background.

There is a gentle slope up to the Coast Path on the sea wall

4

A photograph of a paved path on a grassy bank. Three people are walking away from the camera. One person is in a wheelchair, and another is walking alongside them. The path is made of dark grey tarmac with some lighter patches. The background shows a body of water and some buildings in the distance.

The Surface is a firm and smooth tarmac for 1km

5

Seating is provided every 200m

6

View point at the Harbour mouth

7

Steps with handrails are also available

8

The ramp down to the car park is 200m long and has a gradient of 1:11 at its steepest



Wells Beach Café can be found at this end of the route



Accessible toilets can be found at the entrance to the car park



The Coast Path leaves the car park through a medium sized kissing gate. The Coast Path continues towards Holkham Estate along a track which will be difficult for some. Please see the next booklet in the series for more details.



Try more Trails

Why not explore more of the Coast Path

We've audited other sections of the Norfolk Coast Path for accessibility, including Great Yarmouth, Sheringham, Holme and Hunstanton.

Find out more at www.norfolktrails.co.uk



To find out more about Norfolk Trails
visit www.norfolk.gov.uk/trails