

Marriott's Way

Taverham to Attlebridge



Route Summary

A 2 mile access tested route through woodland and open countryside along Marriott's Way from Freeland Corner car park in Taverham to the Station Road car park in Attlebridge



Route Description

This walk has been audited to support people accessing the countryside and improve quality of life. The walk audit checked for potential accessibility difficulties along the route. Maps are provided showing point numbers which correspond to photos and descriptions of these areas so that you can decide if this walk is suitable for you.

The route is a 2 mile linear section of Marriott's Way, a 26 mile disused railway line, and begins at Freeland Corner car park in Taverham. As you head out of the car park and travel north west along the trail, you will pass through woodland and open countryside and it is a great chance to see a range of different wildlife. There is also plenty of railway heritage and art to see along the way.

As you travel further along the trail you will pass by views of Attlebridge village and eventually arrive at the old Attlebridge railway station, now a private residence. The route will come to an end at Attlebridge car park as Marriott's Way detours around the station. Alternatively, you could return back to the Freeland Corner car park along the route you have just taken. The route can be tailored to any length that is suitable for the individual.



Start point: Freeland Corner car park, Fir Covert Road, Taverham, NR10 4DT Grid Ref: TG160164



Distance: 2 Miles



Accessible facilities: Tesco Superstore, Fakenham Road, Drayton, NR8 6PT

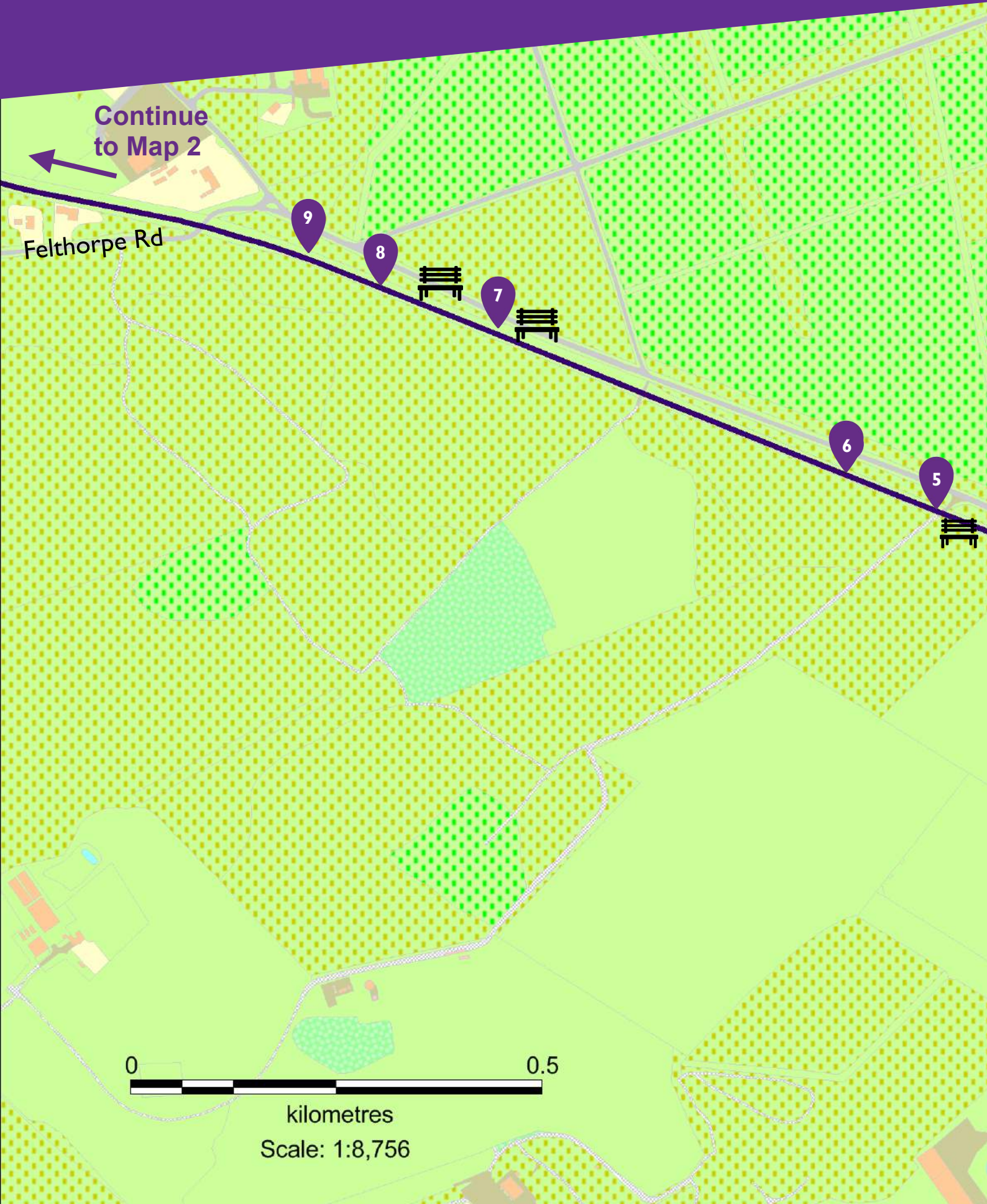


By car: Freeland Corner car park NR10 4DT or Attlebridge car park, NR9 5AA. (Both free parking)



By bus: Nearest stop is at The Street, Attlebridge, NR9 5ST travelineeastanglia.co.uk

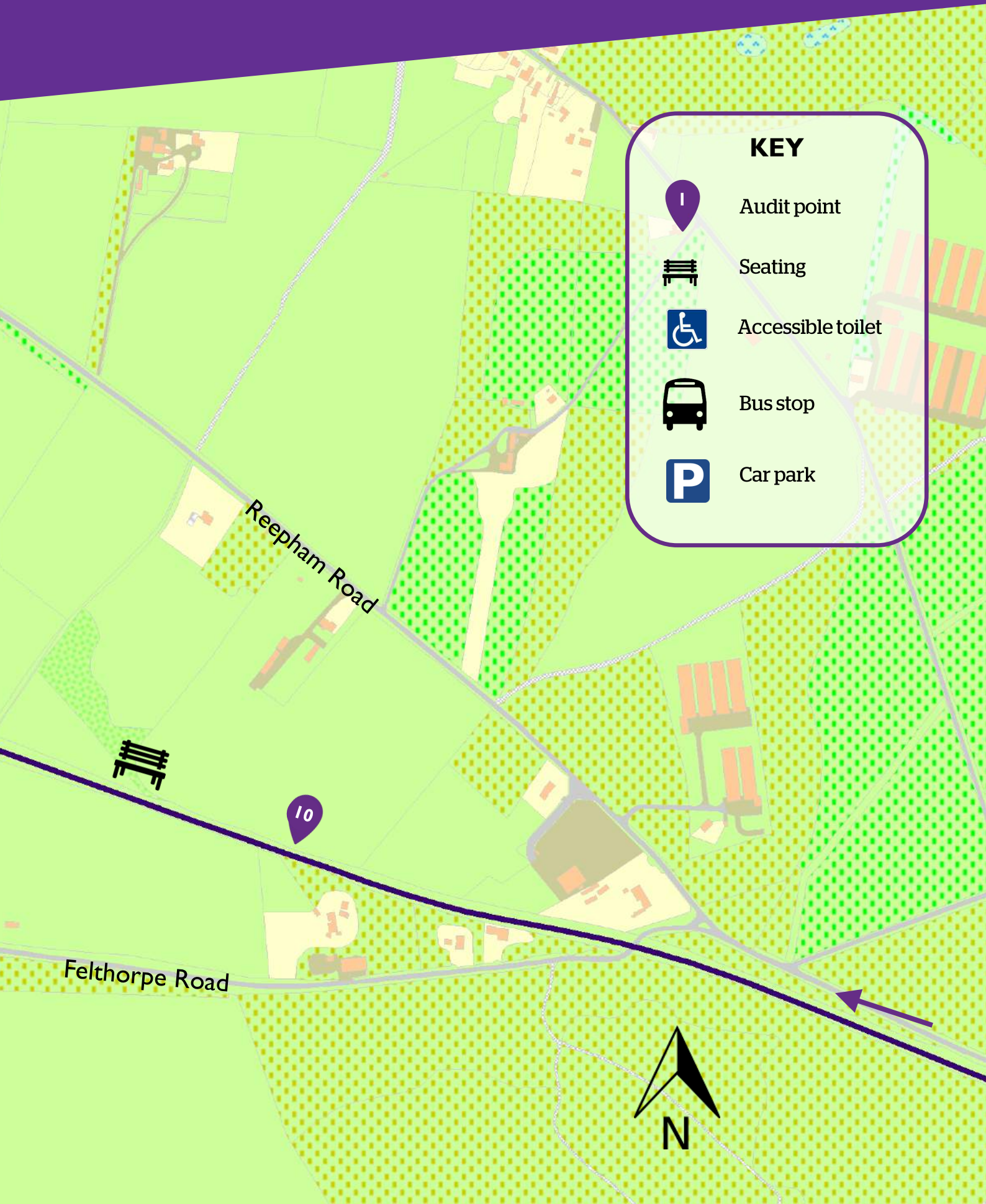
Map 1



Map 2



Map 3



KEY



Audit point



Seating



Accessible toilet



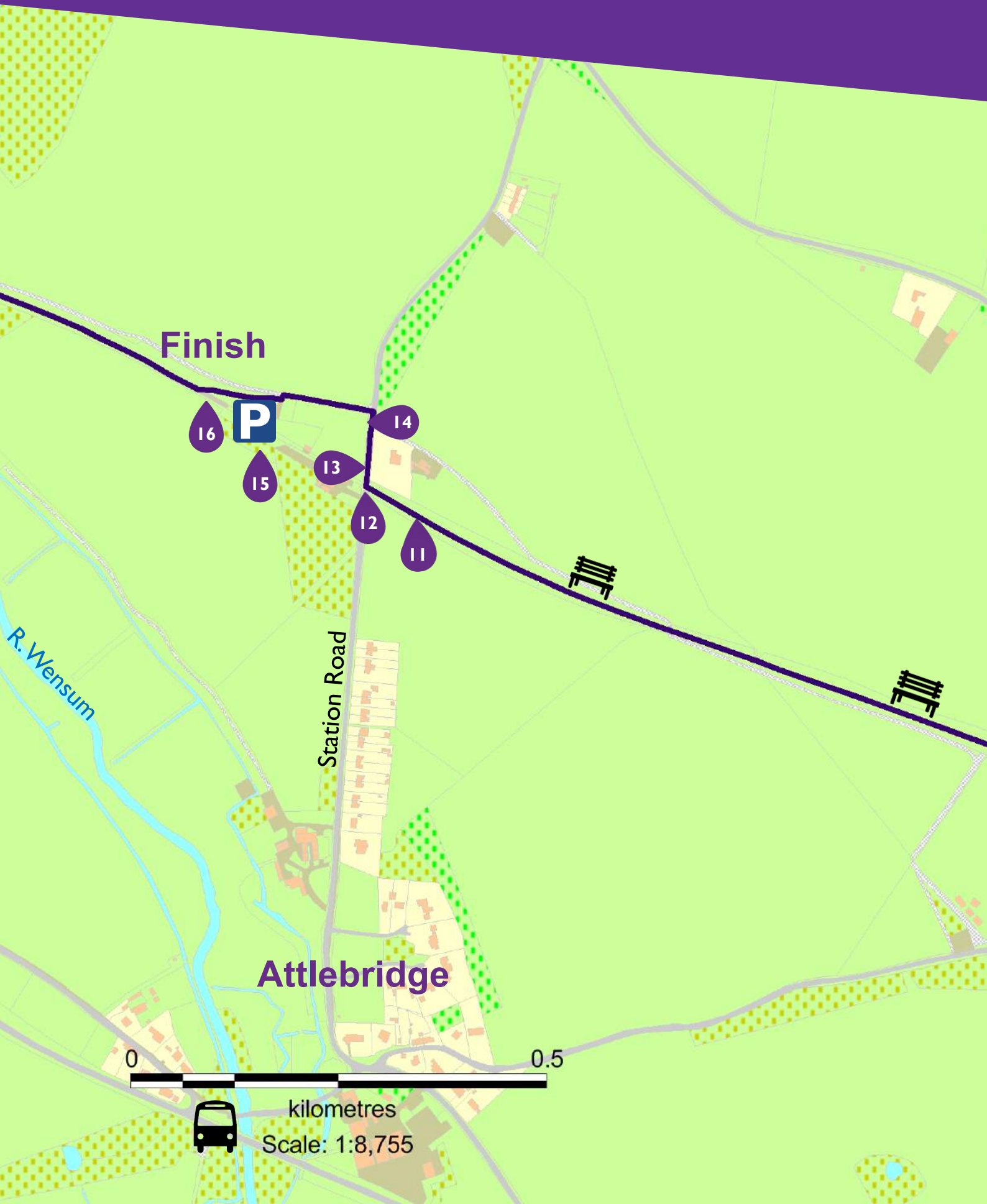
Bus stop



Car park



Map 4



Accessibility Information



Start at Freeland Corner car park and head north west along Marriott's Way. There is a 1:10 gradient slope for 3m which lessens to a gradient of 1:18 for 17m. The surface is manmade with some loose 20mm gravel



There is a cross gradient of 1:7 on the left hand side of the trail for 30m due to wash out. There are some sections of loose sand



The surface changes to a softer, natural surface. The surface is uneven due to a slight split level in the path for 21m



There is a path on two levels for 14m with a 700mm width restriction on each side



There is a slope on the approach to the road crossing with a gradient of 1:7 for 1m on each side of the road



There is a frequently muddy section of the trail for 70m



There can be a 10m section of mud in wet weather



There can be a very muddy 3m section in wet weather



There can be a very muddy section for 4m



Here the path is partially grassed over which creates a width restriction of 300mm for 700m



There is a width restriction of 500mm for 20m



There is a locked gate before Station Road with an adjacent chicane wider than 1000mm. After the gate, there is a 20mm step onto the road



At Station Road, turn right. There is shared use with traffic for 66m and a sustained gradient of 1:24



Turn left onto the gravel track to Attlebridge car park. On the track there is loose 20mm gravel and some sections are uneven with potholes



There is a 450mm width restriction on the path out of the car park for 30m. The route section ends here



There is loose 40mm gravel on Attlebridge car park

Points of interest



The old Attlebridge Station



Railway inspired artwork



The River Wensum

A photograph of a dirt path leading through a wooded area. The path is reddish-brown and has some grass growing in the center. The trees are green and dense, creating a canopy overhead. The path leads towards a bright area in the distance, possibly an open field or a clearing.

Try More Trails..

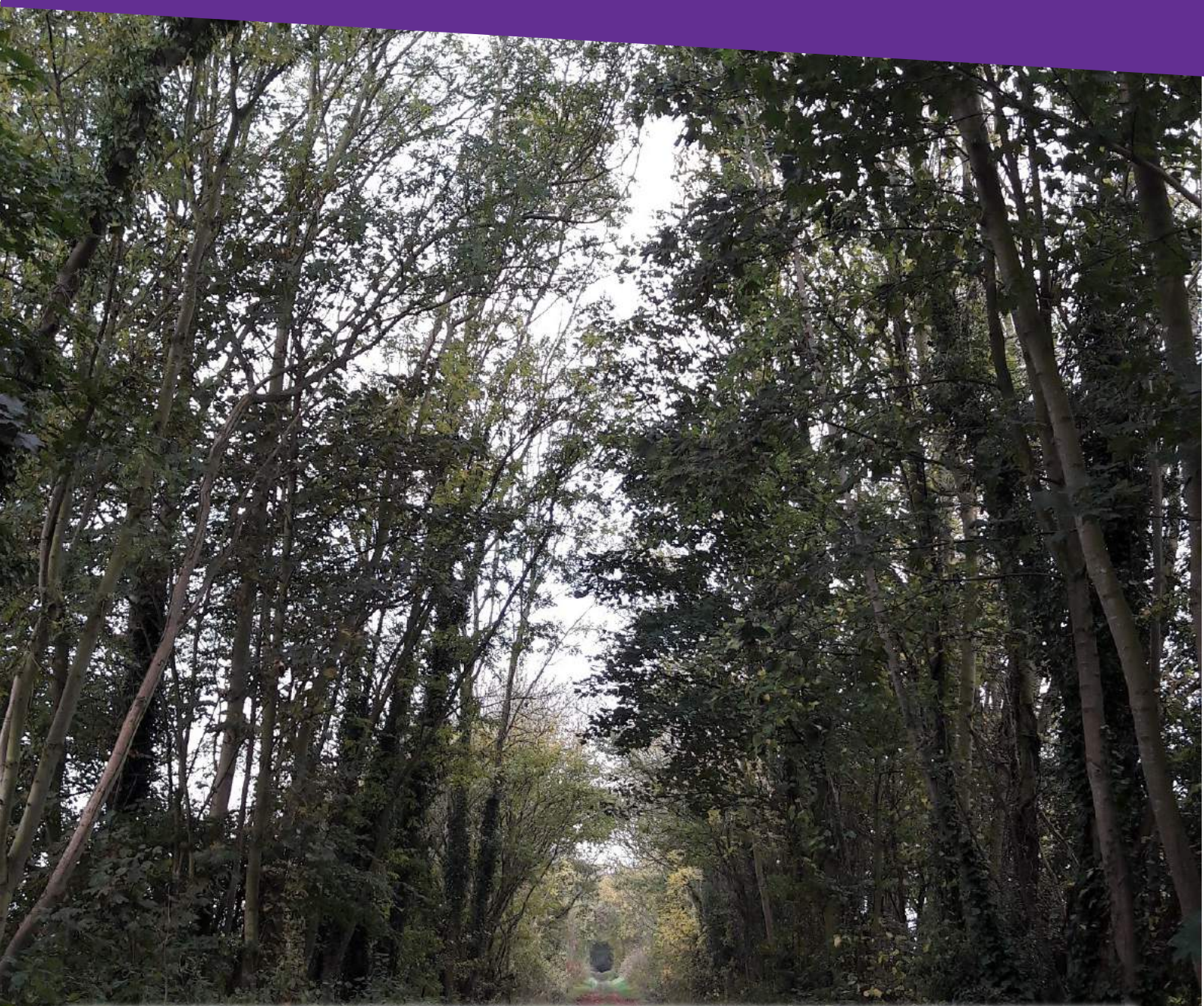
Why not explore other access tested routes along the Marriott's Way?

You could try Hellesdon to Drayton, Lenwade to Whitwell or Aylsham Circular Walk, plus many more.

Or why not try another long distance trail?

You could try The Weavers Way through Aylsham or Boudicca Way also starting in Norwich.

To find out more visit www.norfolktrails.co.uk



Disclaimer

The information given for this route is based on findings on the day of the audit and may vary according to the time of year and the weather. This document gives information about the condition of trails, in order to help people choose routes to explore, but it is up to the user to decide whether or not the route is suitable for their ability.



**To find out more about Norfolk Trails
visit www.norfolk.gov.uk/trails**