

The Brecks

Brandon Flint Walk



Route Summary

A 2 ¼ mile town walk through Brandon, a Breckland town characterised by its flint architecture. The route passes historic buildings, the Little Ouse River

Points of Interest



St Peter's Church



The Flintknappers pub

Bridge over the Little Ouse River



Route Description

A town walk mostly along pavements and quiet back lanes. Gentle slopes from the River Ouse present sustained gradients less than 1:12. Surfaces are mostly good, consisting of level paving. There is a short unmade grass surface for 200m.

This walk has been audited to support people accessing the countryside and improve quality of life. The walk audit checked for potential accessibility difficulties along the route. Maps are provided on p6-9 showing point numbers which correspond to photos and descriptions of these areas so that you can decide if this walk is suitable for you.

The walk starts at Brandon station, then proceeds up Brandon High Street to the junction with London Road at the Flintknappers pub.

At the Church Institute, take the footway called Victoria Avenue past Brandon Leisure Centre before exiting the path onto Church Road. Continue along the pavement after crossing Church Road until you reach St Peter's Church where there is a bench with a view.

Return the way you came but where the road meets Victoria Avenue continue along London Road, Just after the British Legion take the cut through back across the avenue to join a footpath going north.

The short footpath takes you past The Orchard, a picnic spot with benches. The path then joins Coulson Lane at The Orchard. Continue along the pavement until you reach an alleyway which goes back to the High Street. Return to the Station along the High Street.



Start point: Brandon
Railway Station
TL7843 8725



Distance: 2 ¼



Accessible facilities

Ask to use the toilets at the Brandon Centre on School Lane



By car: Car parking on George Street

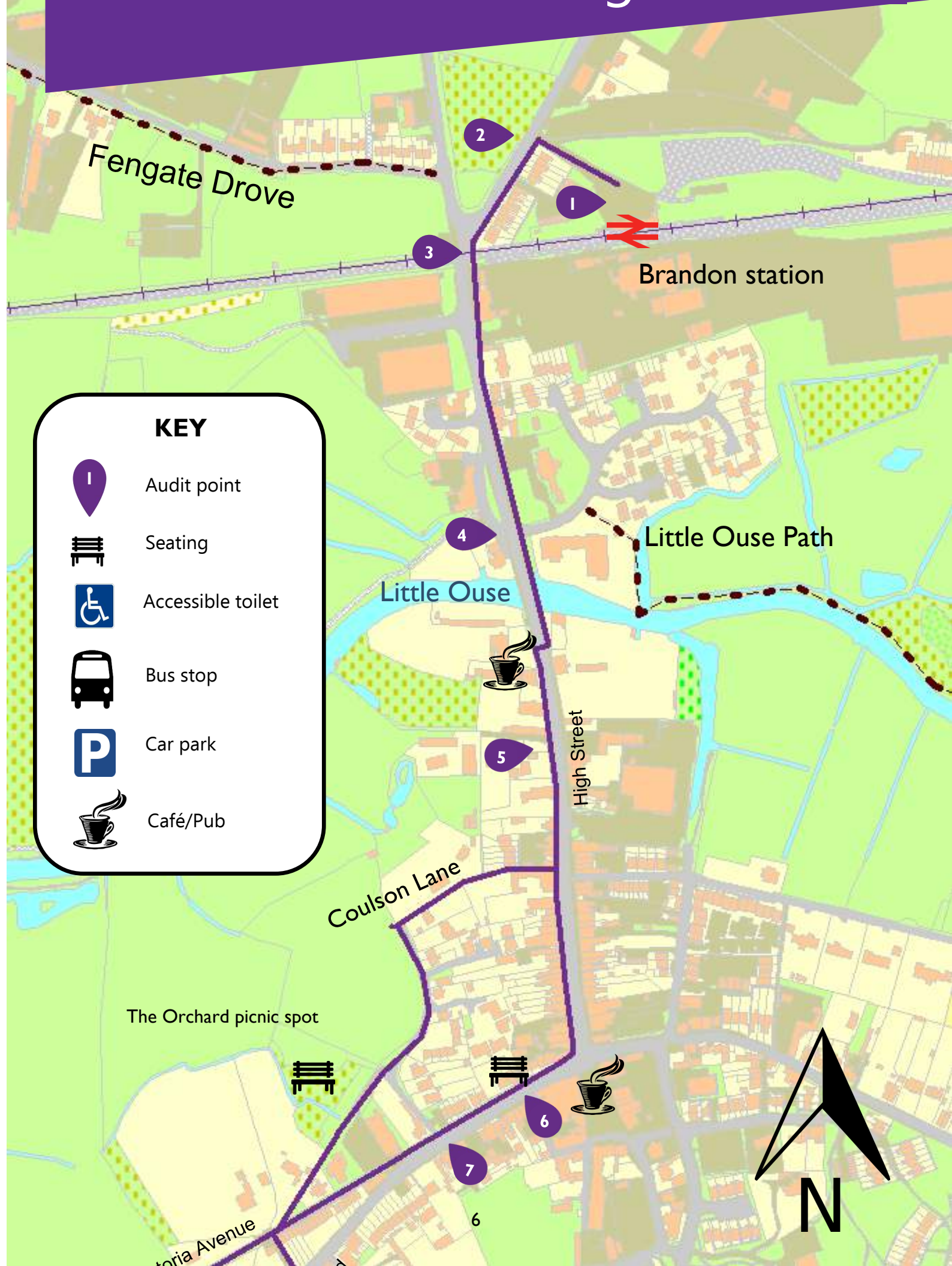


By bus: Coach service
No 40. (from Thetford/
Kings Lynn)

travelineeastanglia.co.uk



Brandon Station to High Street



KEY



Audit point



Seating



Accessible toilet



Bus stop



Car park



Café/Pub

The Orchard picnic spot





High Street

Flint knappers pub



Coulson Lane

17 16 15 14

13

Little Ouse

London Road

Victoria Avenue

12

Brandon Leisure Centre

8

11



KEY



Audit point



Seating



Accessible toilet



Bus stop



Car park



Cafe

9

10

St Peter's Church



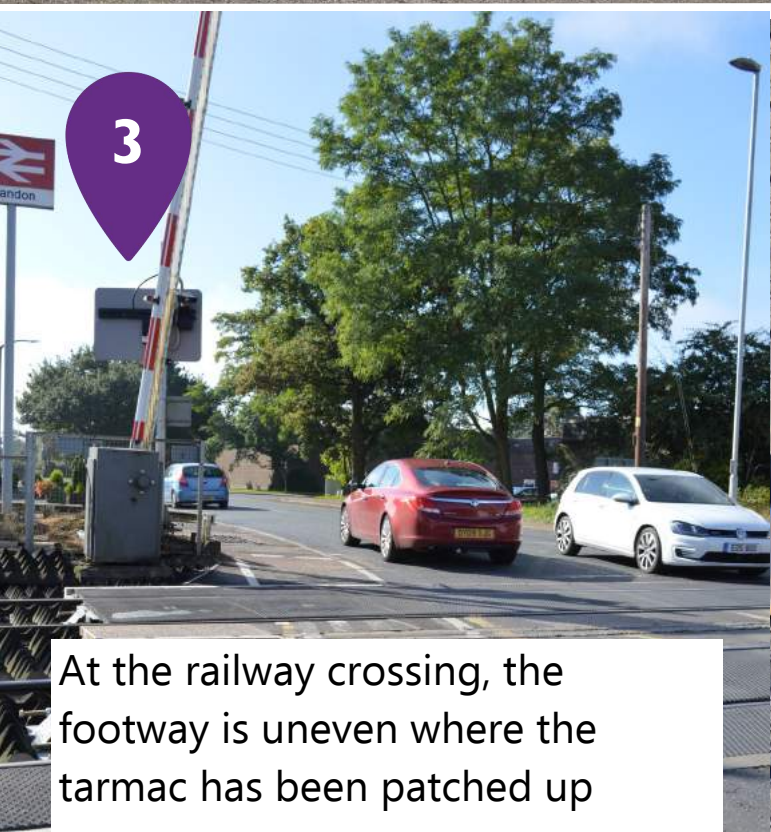
Accessibility Information



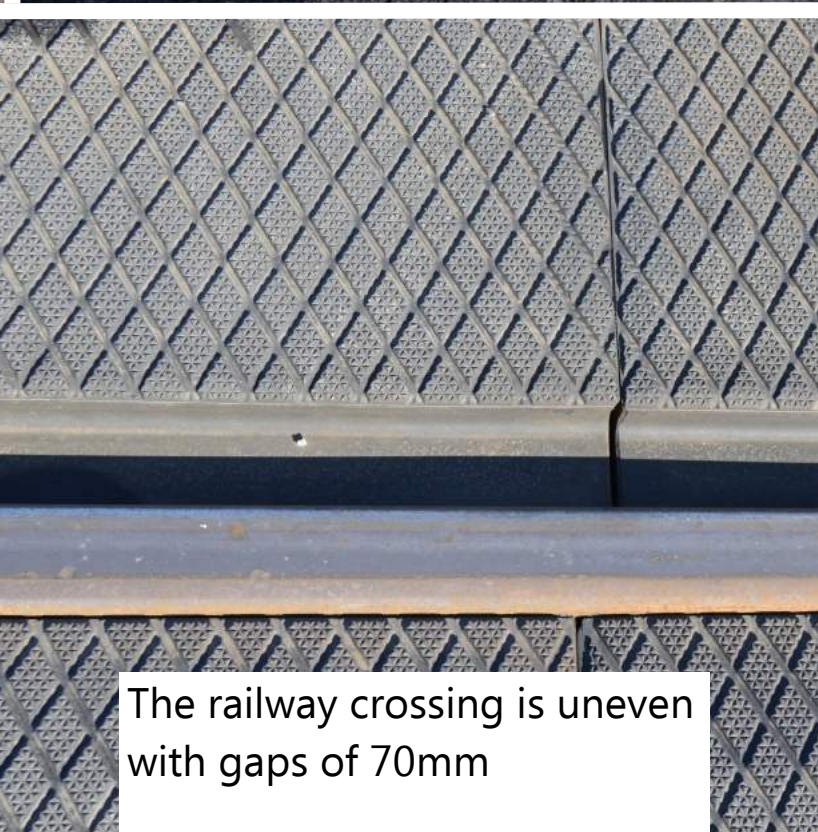
Start at Brandon station which has a tarmac surface.



Uneven footway for 20m plus two kerbs measuring 100mm and 80mm at the exit from the station car park



At the railway crossing, the footway is uneven where the tarmac has been patched up



The railway crossing is uneven with gaps of 70mm

A photograph of a road crossing with a dropped kerb. The road is paved with asphalt and has a white dashed line marking. The kerb is lowered to the road level. There are trees and a utility pole in the background.

4

Road crossing before the bridge over the Little Ouse with a dropped kerb. There is a slope of 1:14 gradient down to the kerb.

A photograph of a street scene on High Street. The road is paved with asphalt. On the right side, there are paving slabs for a sidewalk. There are cars parked on the street, a person walking, and buildings in the background.

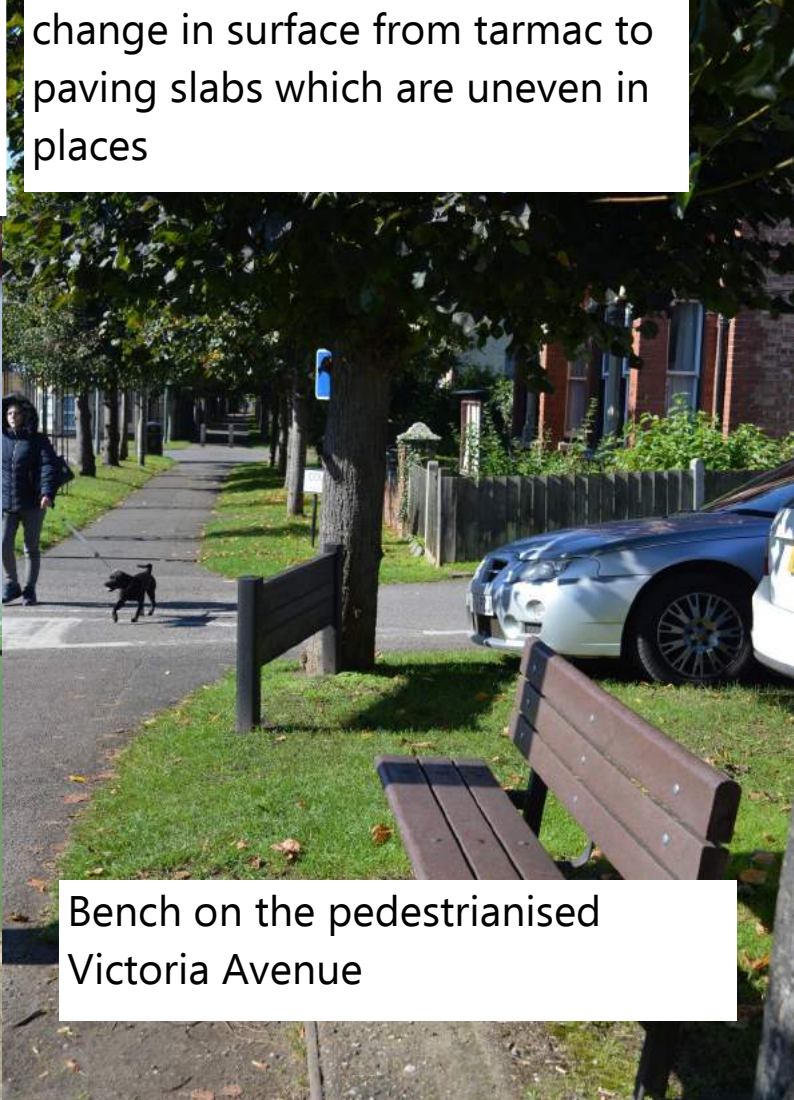
5

On the High Street there is a change in surface from tarmac to paving slabs which are uneven in places

A photograph of a footway with uneven paving. A white van is parked on the left. A person in a blue jacket is sitting in a motorized wheelchair on the right. There are trees and a utility pole in the background.

6

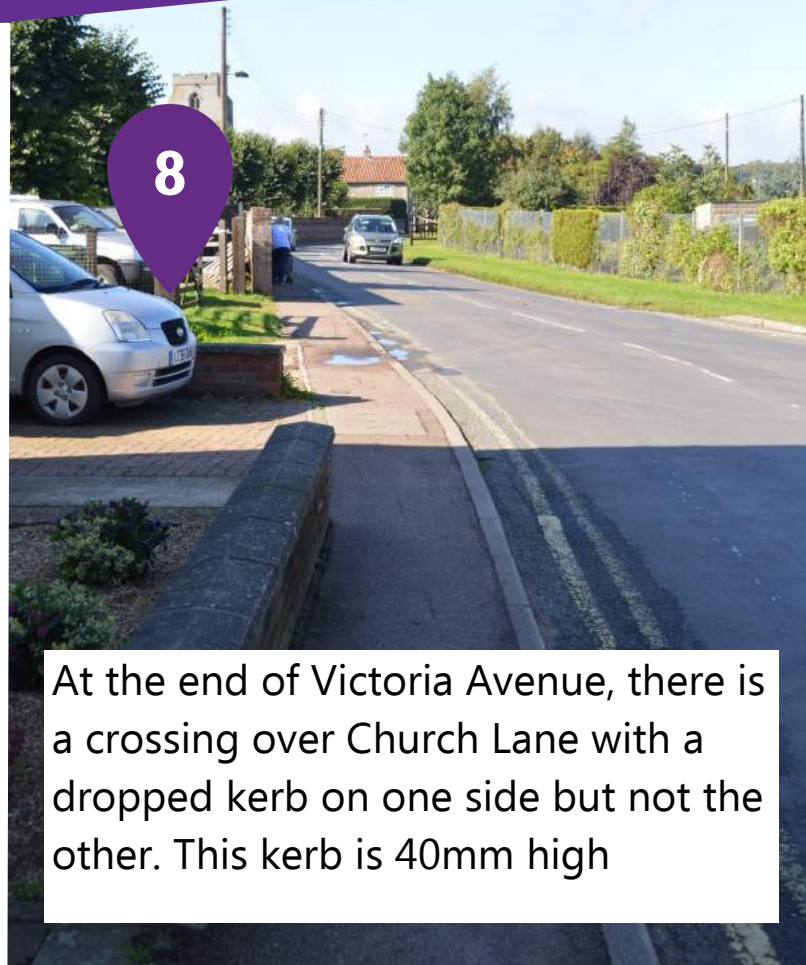
The footway here has a cross gradient of 1:12 for 12m. The surface is uneven due to root damage

A photograph of a bench on a pedestrianised street. The bench is made of dark wood and is situated on a paved sidewalk. There are trees and a car in the background.

Bench on the pedestrianised Victoria Avenue



970mm restriction between bollards with an uneven surface



At the end of Victoria Avenue, there is a crossing over Church Lane with a dropped kerb on one side but not the other. This kerb is 40mm high



It is possible to loop around the church on the road for 200m, but as there is no footway it may be preferable to stay on the path that goes through the churchyard



Bench by the church with an information board about the walk

10

The surface is uneven through the church yard

11

Here there is an uneven surface for 15m

12

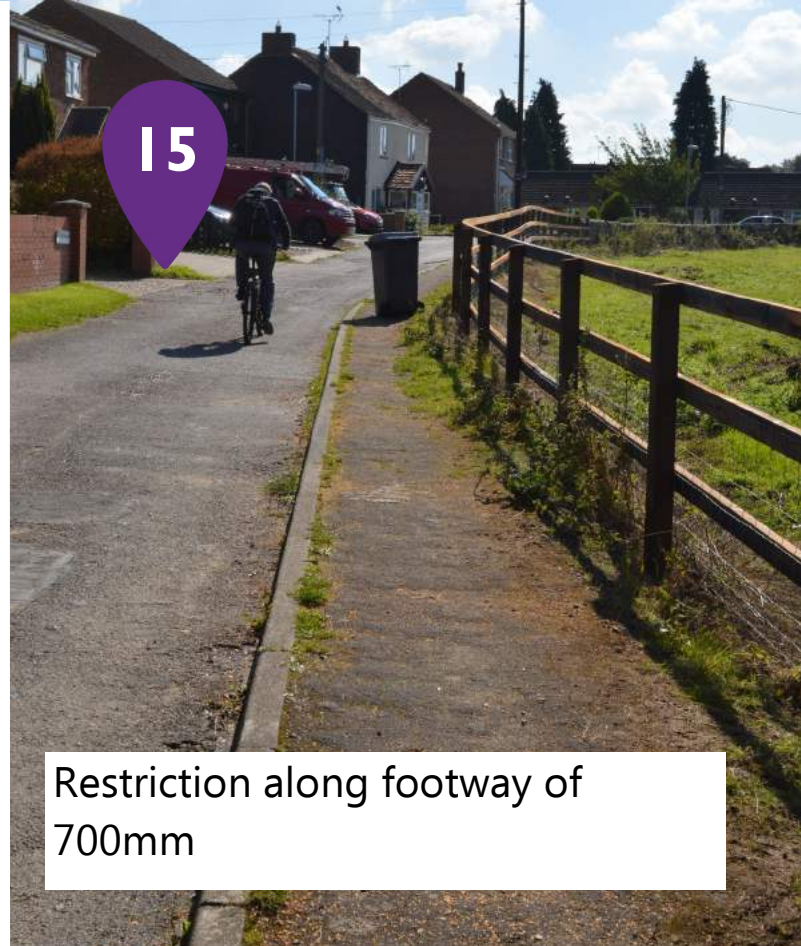
Uneven surface for 4m

13

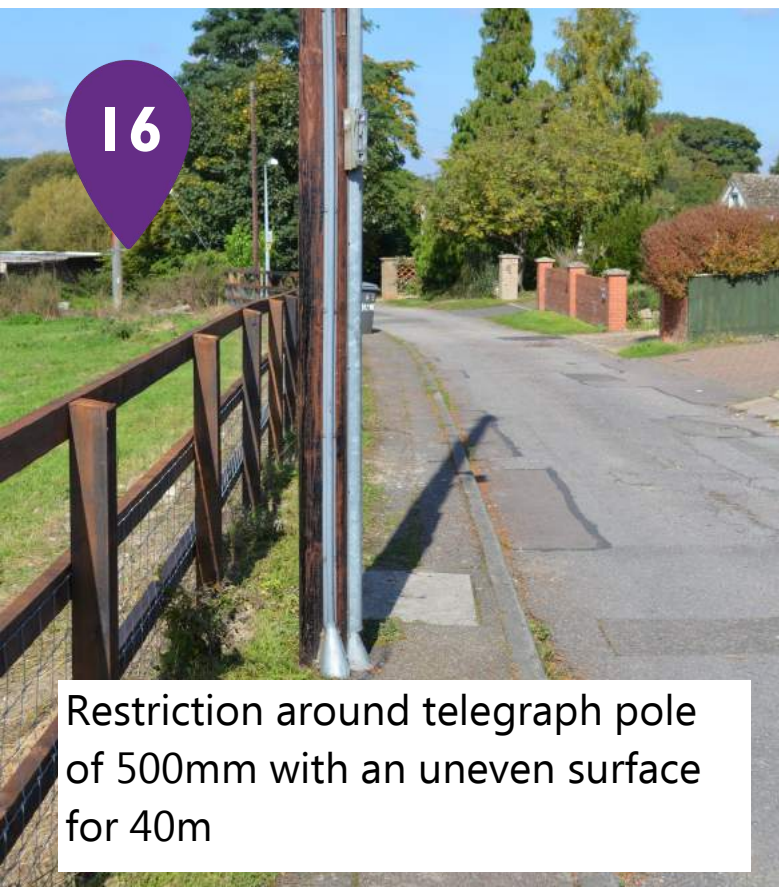
Here is a short stretch of natural surface for 170m with a width of 400mm



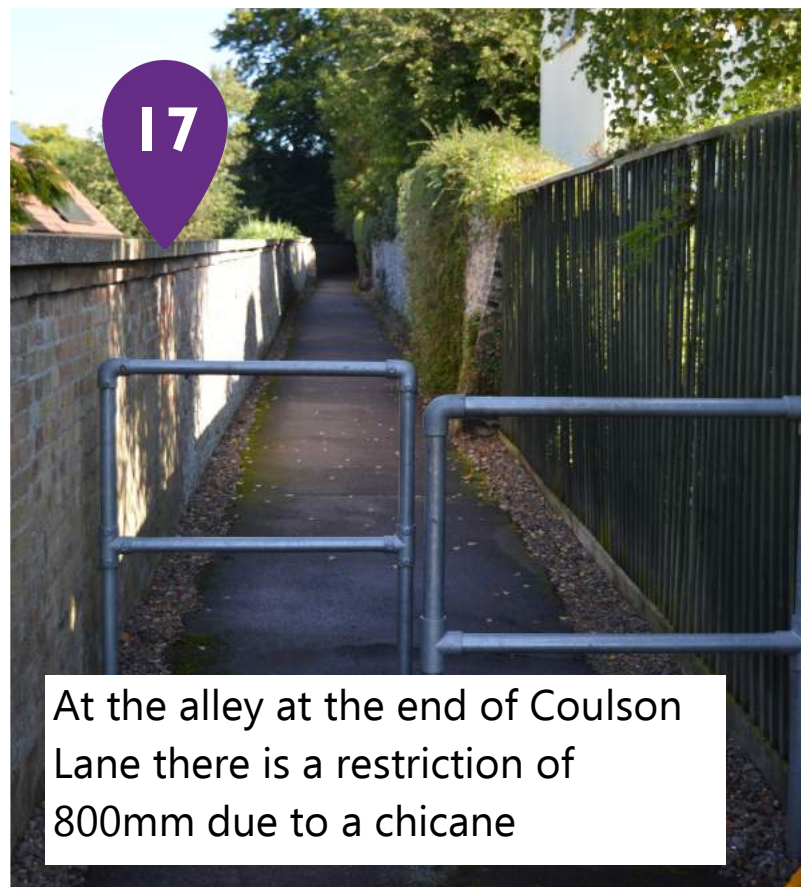
Uneven surface for 40m. Photo shows the Orchard picnic spot with a view over the Little Ouse valley



Restriction along footway of 700mm



Restriction around telegraph pole of 500mm with an uneven surface for 40m



At the alley at the end of Coulson Lane there is a restriction of 800mm due to a chicane



Disclaimer

Please bear in mind that the information given for this route is based on findings on the day of the audit and may vary according to the time of year and the weather. This document gives information about the condition of trails in order to help people choose routes to explore but it is up to the individual to decide whether or not the route is suitable for their ability.

Why not explore other ways into the countryside from Brandon?

The Little Ouse Path goes all the way from Brandon to Thetford. In 2017, resurfacing work on the Little Ouse Path was started to improve accessibility between Santon Downham and Brandon. The Weeting Flint walk also starts at Brandon station and is the next booklet in this series.

To find out more about Norfolk Trails
visit www.norfolk.gov.uk/trails